



Photo by Hugh Byrne

BikeMAP

SOUTHERN NEVADA

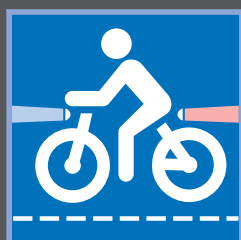


Rules of the Road & Bicycle Safety Tips



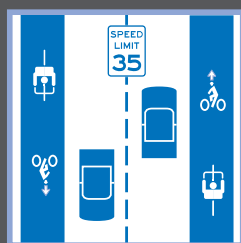
PROTECT YOUR HEAD

- Always wear a hard-shell helmet
- Helmet should be level and two finger width above the eyebrows
- Straps should come to a point just below the ears
- Chin strap should be tight so the helmet moves when you open your mouth



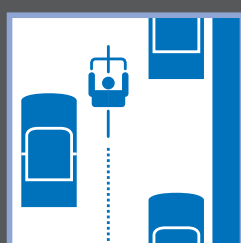
BE VISIBLE

- Front white light visible from 500 feet
- Rear red light/reflector visible from 300 feet
- Wear bright clothes and reflective materials



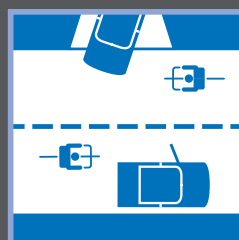
USE BIKE-FRIENDLY ROUTES

- Choose streets with designated bicycle infrastructure
- Choose streets with lower speed limits



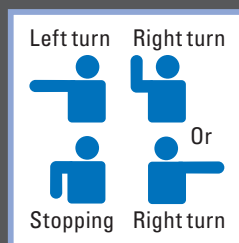
BE PREDICTABLE

- Ride in a straight line and don't swerve between parked cars
- Signal turns
- Check behind you well before making a turn or changing lanes



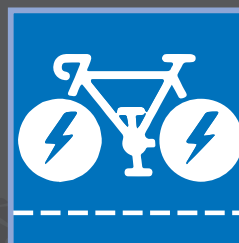
RIDE DEFENSIVELY

- Ride where drivers expect you; typically not on sidewalks
- Assume drivers don't see you
- Be aware of people who may step into the road or open car doors
- Make eye contact when turning or changing lanes



USE HAND SIGNALS

- Scan behind you
- Signal approx. 100 feet before your turn
- Hold for 4-6 seconds
- Scan again
- When safe, execute turn

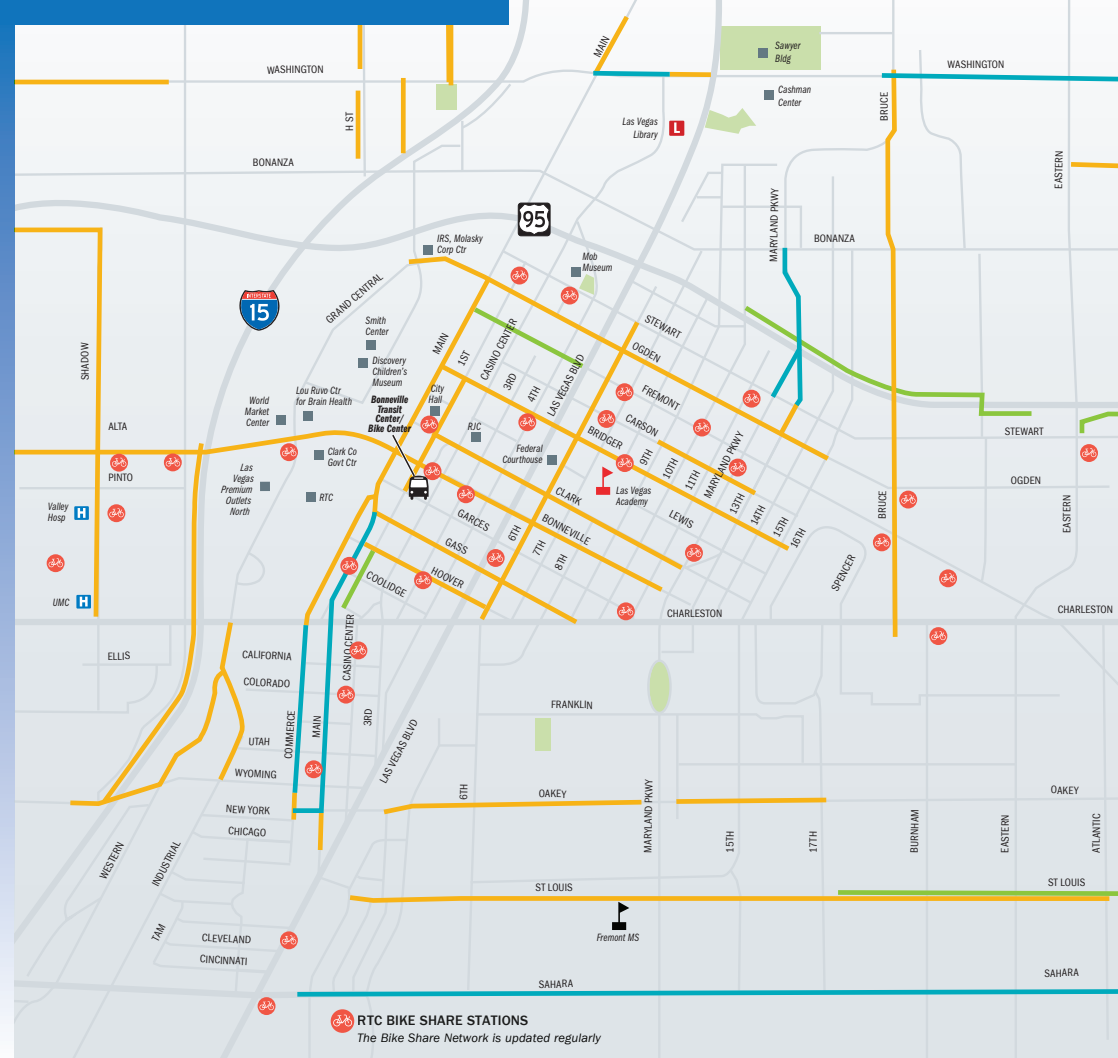


E-BIKES

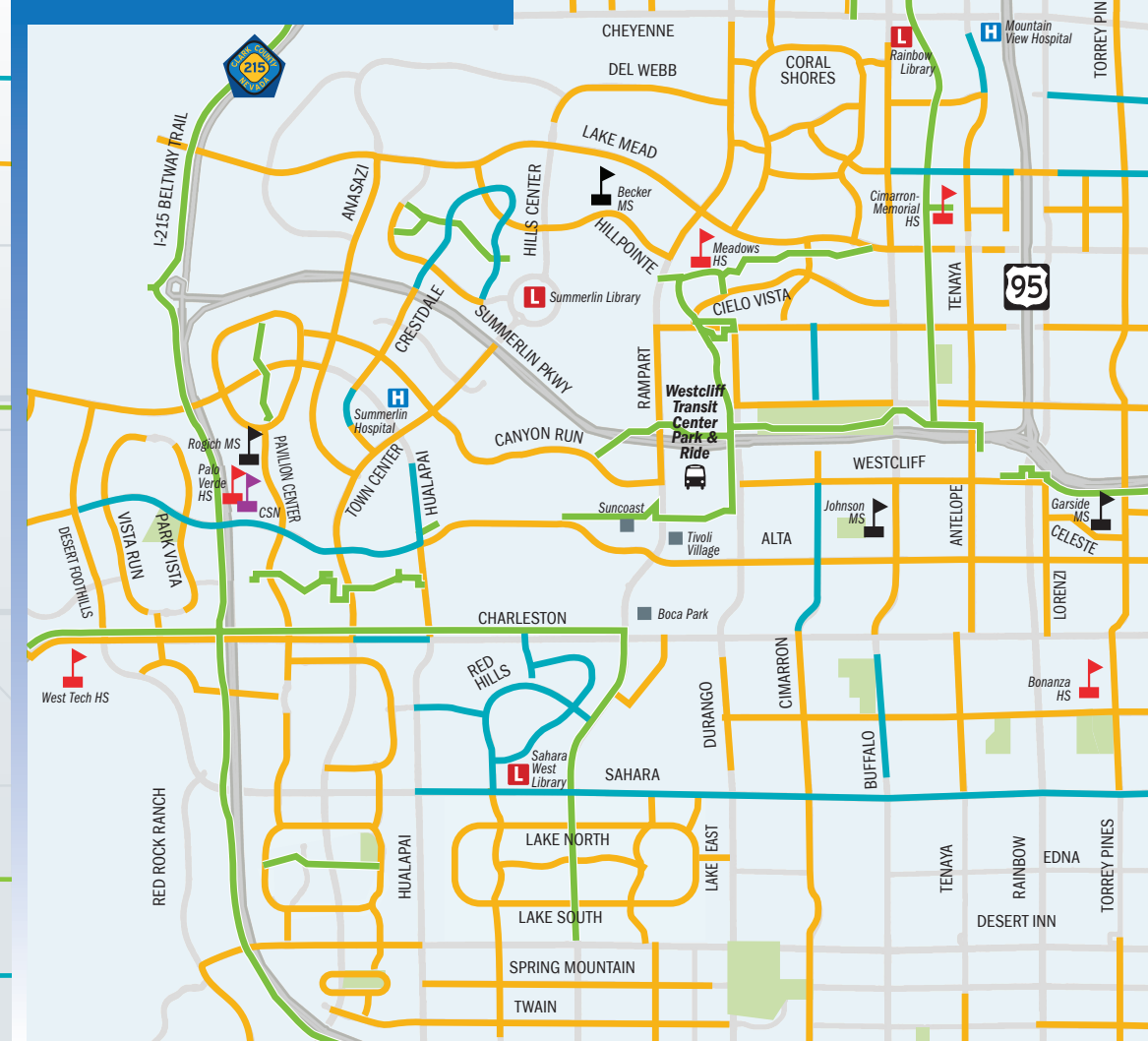
- E-bikes are allowed to use bike lanes and multi-use paths
- People riding an e-bike are required to follow the same rules of the road that are in place for classic bicycles



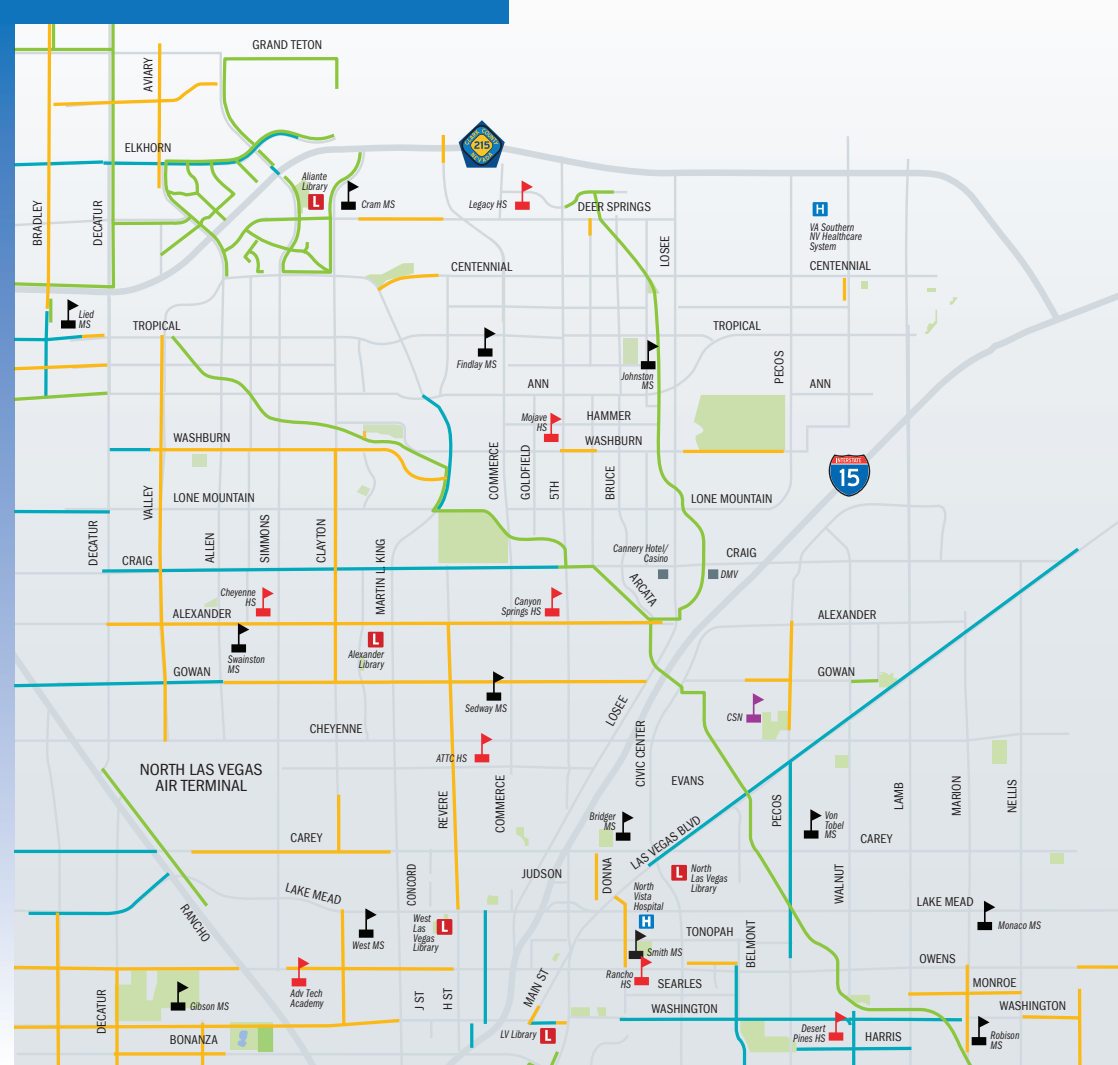
DOWNTOWN LAS VEGAS



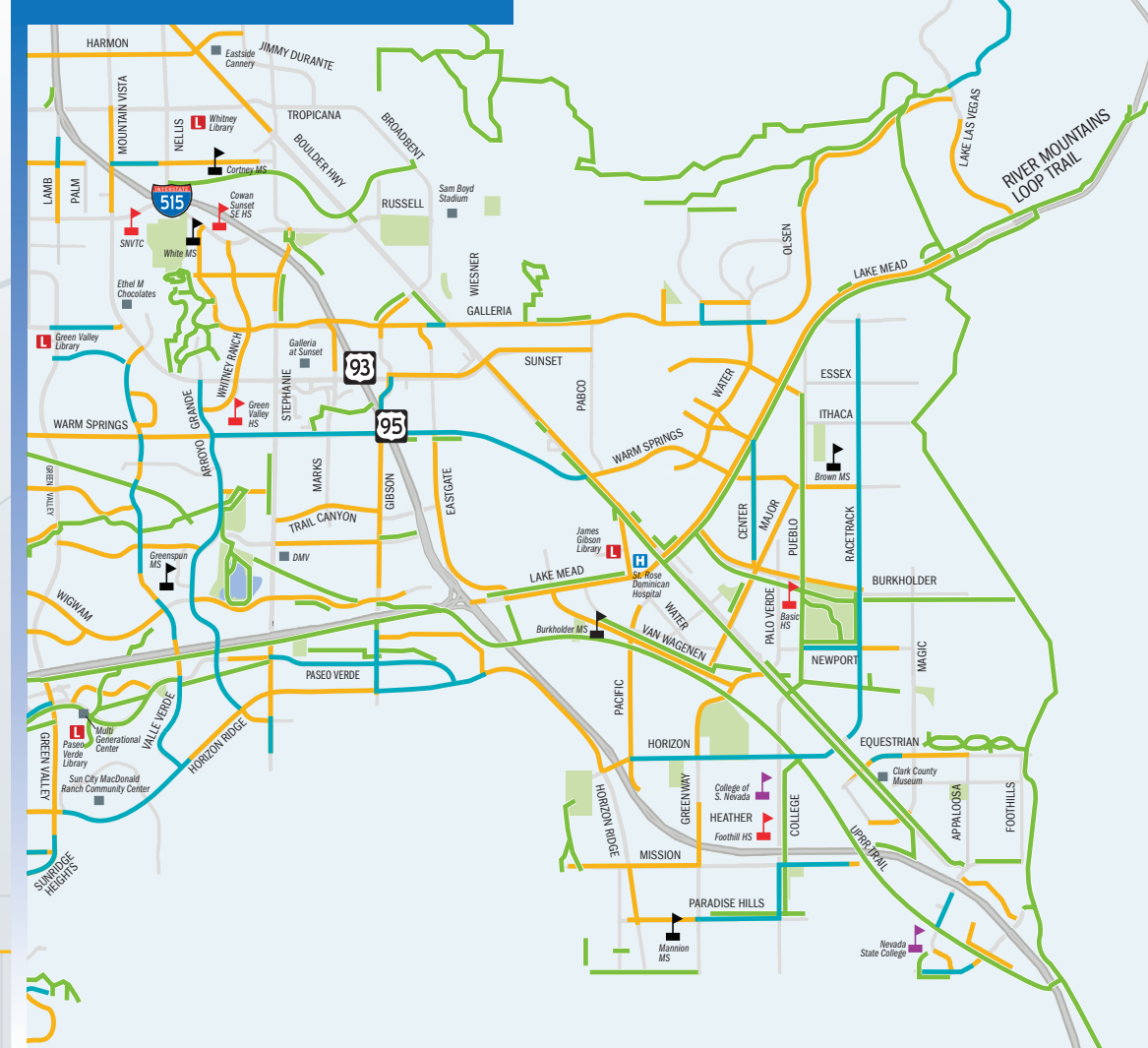
SUMMERLIN



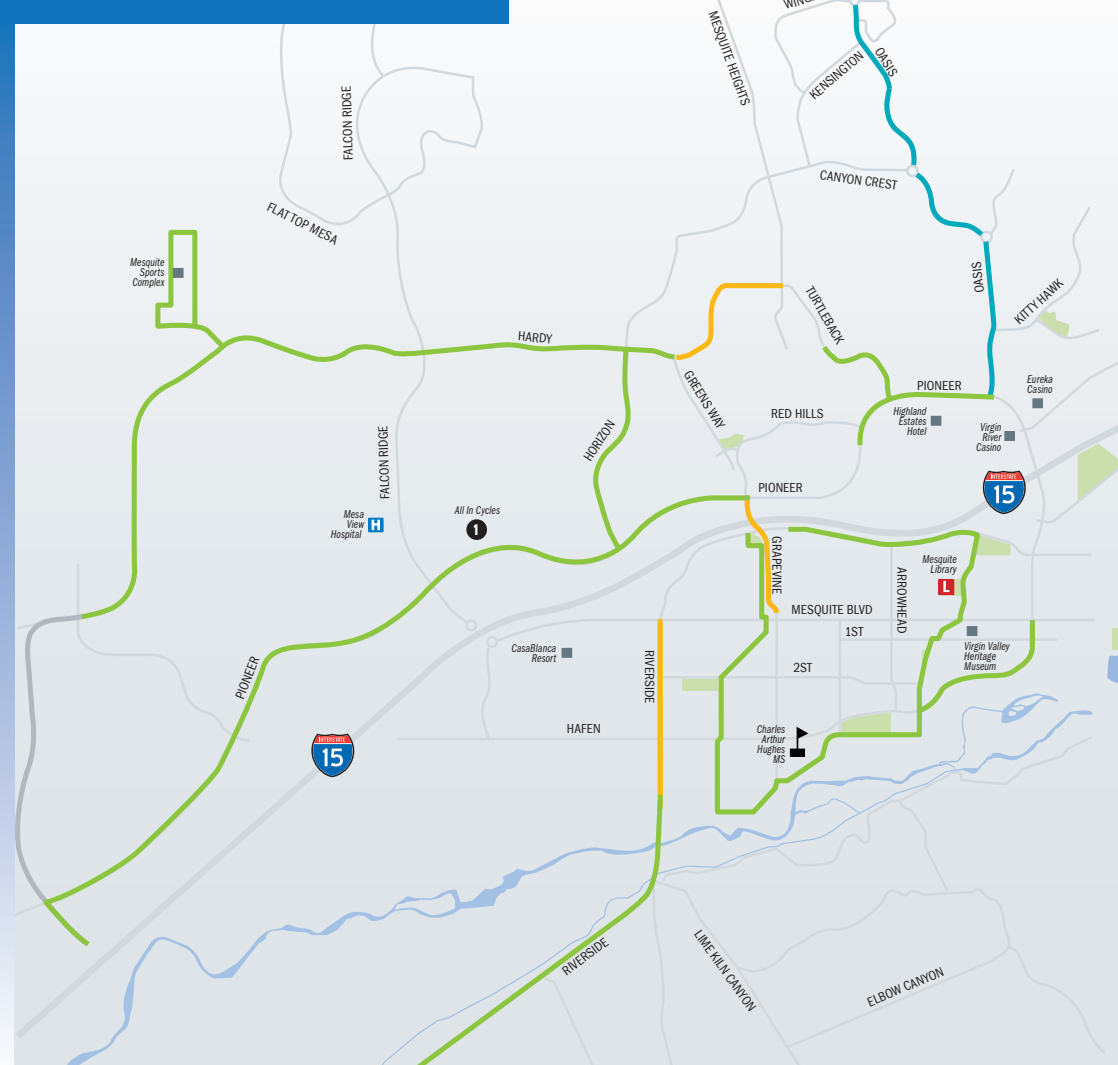
NORTH LAS VEGAS



HENDERSON



MESQUITE



BOULDER CITY



MAPS LEGEND

- Bicycle Lane
- Enhanced Bicycle Lane
- Shared-Use Path

Traveling Around the Valley

Getting around by bicycle continues to get easier with the growing number of bicycle facilities throughout the valley. The Regional Transportation Commission of Southern Nevada (RTC), in cooperation with local governments, community partners and citizens, has made great strides towards making bicycling more viable and convenient as a mobility choice. Currently, there are more than 1000 miles of biking infrastructure in the valley with the addition of many more planned for the future.

Bicycle with Transit

Bicycling is a great way to access the valley's transit system and cross long distances in true comfort. All RTC buses are equipped with bicycle racks, most with room for three. The RTC's public transit system carries more than 54,000 bikes each month. There is no additional cost to bring your bicycle along for the ride.

Club Ride

Club Ride Commuter Services is the RTC's free program for employers and commuters to reduce traffic congestion and improve air quality. Through a variety of incentives including a monthly rewards program, membership benefits such as the discounted EZ Rider Transit Pass and Guaranteed Ride Home programs, and exclusive discounts available at a variety of local merchants, Club Ride encourages commuters to try new ways to get to work including walking, bicycling, riding transit, carpooling and more. We invite you to be a part of the movement. Learn more at rtcnsnv.com/Club_Ride.

RTC Bike Center

Located inside the Bonneville Transit Center (BTC) in downtown Las Vegas, the RTC's Bike Center is a full service bike shop and repair facility that provides free indoor parking for up to 75 bikes at a time. Members who pay for premium membership also have access to lockers, restrooms and private showers that are secured for their exclusive use and located within the Bike Center.

The Bike Center is open Monday through Saturday, 9 a.m. to 5 p.m. Visit rtcnsnv.com for more information.

Loading Bikes on The Bus

Tell driver when exiting that you are unloading a bike. Return rack to upright position if last person to remove bike. RTC is not responsible for lost or stolen bikes, or damage to bikes due to improper loading.

Note: The weight limit per bike is 55 pounds



1. Squeeze handle to release rack



2. Lower Rack



3. Place front wheel on side labeled "front wheel"



4. Pull support arm over wheel



If you don't have your own bike, you can still enjoy biking with RTC Bike Share – the valley's first public bike share system. With stations conveniently located throughout downtown Las Vegas, it is an easy, fun and quick way to make trips under 30 minutes. For more information on bike share and to sign up, visit: bikeshare.rtcnsnv.com

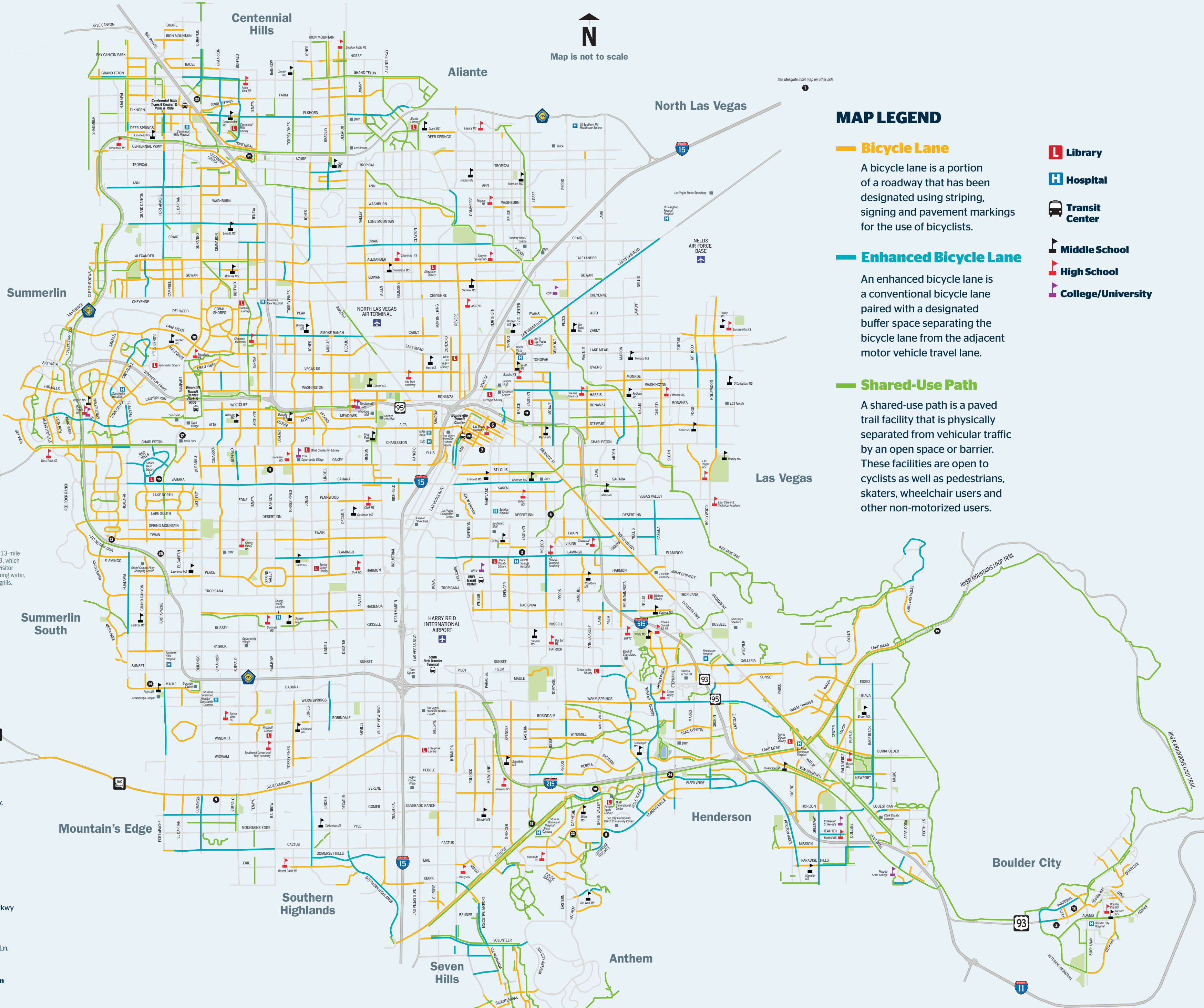


Bicycle Advocacy Groups

- 3 Feet For Pete**
threefeetforpete.com
- Breakaway Cycling**
breakawaycycling.org
- Green Valley Cyclists**
greenvalleycyclists.org
- Henderson Bicycle Advisory Committee**
bikehenderson.com
- Las Vegas Valley Bike Club**
lasvegaskbicycleclub.org
- Nevada Bicycle and Pedestrian Board**
dot.nv.gov/mobility/bicycle-and-pedestrian-board
- River Mountains Trail Loop**
rivermountainstrail.org
- Southern Nevada Bicycle Coalition**
snvbc.org
- Southern Nevada Mountain Biking Association**
snmba.org

Sidewalk, Curb Ramps and Street Maintenance

- City of Las Vegas**
(702) 229-6227
- City of Henderson**
(702) 267-3259
- City of North Las Vegas**
(702) 633-1313
- Clark County**
(702) 455-6000
- Boulder City**
(702) 293-9200
- City of Mesquite**
(702) 346-5237



MAP LEGEND

- Bicycle Lane**
A bicycle lane is a portion of a roadway that has been designated using striping, signing and pavement markings for the use of bicyclists.
- Enhanced Bicycle Lane**
An enhanced bicycle lane is a conventional bicycle lane paired with a designated buffer space separating the bicycle lane from the adjacent motor vehicle travel lane.
- Shared-Use Path**
A shared-use path is a paved trail facility that is physically separated from vehicular traffic by an open space or barrier. These facilities are open to cyclists as well as pedestrians, skaters, wheelchair users and other non-motorized users.
- Library**
- Hospital**
- Transit Center**
- Middle School**
- High School**
- College/University**

BICYCLE SHOPS

- All In Cycles**
1085 W Pioneer Blvd
Suite 170
Mesquite NV 89027
702-684-1293
- All Mountain Cyclery**
1601 Boulder City Pkwy.
Boulder City, NV 89005
702-453-2453
- Bike World East**
2320 E. Flamingo Rd.
Las Vegas, NV 89119
702-735-7551
- Bike World West**
1901 S. Rainbow Blvd.
Las Vegas, NV 89146
702-254-1718
- Epic E-bike Adventures**
3160 E. Desert Inn Rd
Suite 8 & 9
Las Vegas, NV 89121
702-236-4611
- Epic E-bike Adventures**
Fremont St
901 E. Fremont St
Las Vegas, NV 89101
702-236-4611
- First Choice Bicycle**
1000 E. Charleston Blvd.
Suite 106
Las Vegas, NV 89104
702-382-5775
- Giant Las Vegas**
Henderson
570 S Green Valley Pkwy
Suite 130
Henderson, NV 89012
702-844-2453
- Giant Las Vegas**
Mountain's Edge
9345 S. Cimarron Rd.
Suite 100
Las Vegas, NV 89178
702-844-2453
- Giant Las Vegas**
Summerlin
2283 N Rampart Blvd
Las Vegas, NV 89128
702-844-2453
- Golden Crown Bicycles**
2320 E Bonanza Rd
Suite B
Las Vegas, NV 89101
702-968-0334
- Las Vegas Cyclery**
10575 Discovery Dr.
Las Vegas, NV 89135
702-596-2953
- Loop Custom Cyclery**
1312 Boulder City Pkwy.
Suite B
Boulder City, NV 89005
702-942-3417
- Pedal & Pour**
9742 W Maule Ave
Las Vegas, NV 89148
702-992-3462
- Pedego Electric Bikes**
2986 St Rose Pkwy
Henderson, NV 89074
702-366-9300
- Pro Cyclery**
9440 W Sahara Ave.
Suite 150
Las Vegas, NV 89117
702-228-9460
- REI - Boca Park Store**
710 S. Rampart Blvd.
Las Vegas, NV 89145
702-951-4488
- REI - Henderson**
2220 Village Walk Dr.
Suite 150
Henderson, NV 89052
702-896-7111
- River Mountains Bike Shop**
2310 E. Lake Mead Pkwy.
Henderson, NV 89015
702-564-3058
- RTC Bike Center**
101 Bonneville Ave.
Las Vegas, NV 89106
702-875-4288
- Southwest Bikes**
7290 W. Azure Dr.
Suite 130
Las Vegas, NV 89130
702-227-7433
- Swanny's Cycles**
2525 W Horizon Ridge Pkwy
Suite 120
Henderson, NV 89052
702-483-3500
- The Vault Bike Shop**
7575 Norman Rockwell Ln.
Suite 120
Las Vegas, NV 89143
702-839-9091
- Trek Bicycle Henderson**
19 S. Stephanie St.
Suite 100
Henderson, NV 89012
702-800-3636
- Trek Bicycle Las Vegas Rental Center**
16 Cottonwood Dr.
Blue Diamond, NV 89004
702-875-4820
- Trek Bicycle Las Vegas West**
4035 S Fort Apache Rd
Las Vegas, NV 89147
702-252-8077



The RTC of Southern Nevada has published this map to aid people riding bikes. People riding bikes are urged to use facilities that are suitable to their individual cycling skills and to be aware that traffic volumes during certain times of the day may be unsuitable for their cycling abilities. The RTC of Southern Nevada takes no responsibility for users' safety and in no way warrants the safety or fitness of the suggested routes.

