



1

TRAFFIC SIGNAL RE-TIMING PROJECTS

Completed Projects

- Bermuda, Silverado Ranch to Windmill – AM* peak hour & Mid-Day*
- Las Vegas Blvd, Windmill to I-215 – AM* peak hour & Mid-Day*
- Maryland, Silverado Ranch to Windmill – AM* peak hour & Mid-Day
- Pebble, Las Vegas Blvd to Maryland – AM* peak hour & Mid-Day*
- Silverado Ranch, Dean Martin to Spencer – AM* peak hour & Mid-Day*
- Windmill, Las Vegas Blvd to I-215 – AM* peak hour & Mid-Day*

Note:
*Indicates Corridor with Before and After
Report included in this summary

2

TRAFFIC SIGNAL RE-TIMING PROJECTS

Current Projects

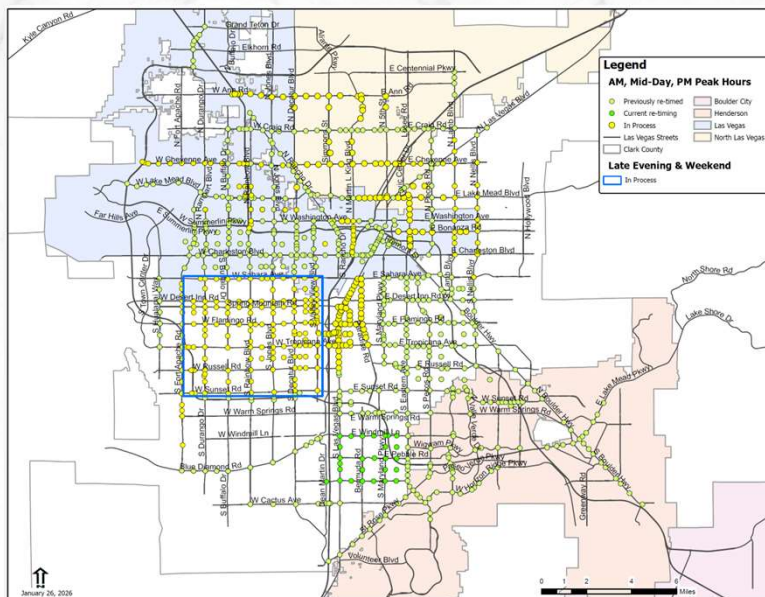
- Las Vegas Blvd, Russell to Sahara
- Paradise, Tropicana to Sahara
- Harmon, Aldebaran to Koval
- Area bound by Las Vegas Blvd, Silverado Ranch, Windmill and Spencer
- Late Evening & Weekend timing plans for Southwest grid
- St. Rose – fine tuning
- Cadence access points – Galleria and Sunset

Upcoming Projects

- Maryland BRT route
- Nellis, Sahara to Las Vegas Blvd
- Late Evening & Weekend timing plans for Southeast grid

3

RETIMED INTERSECTIONS



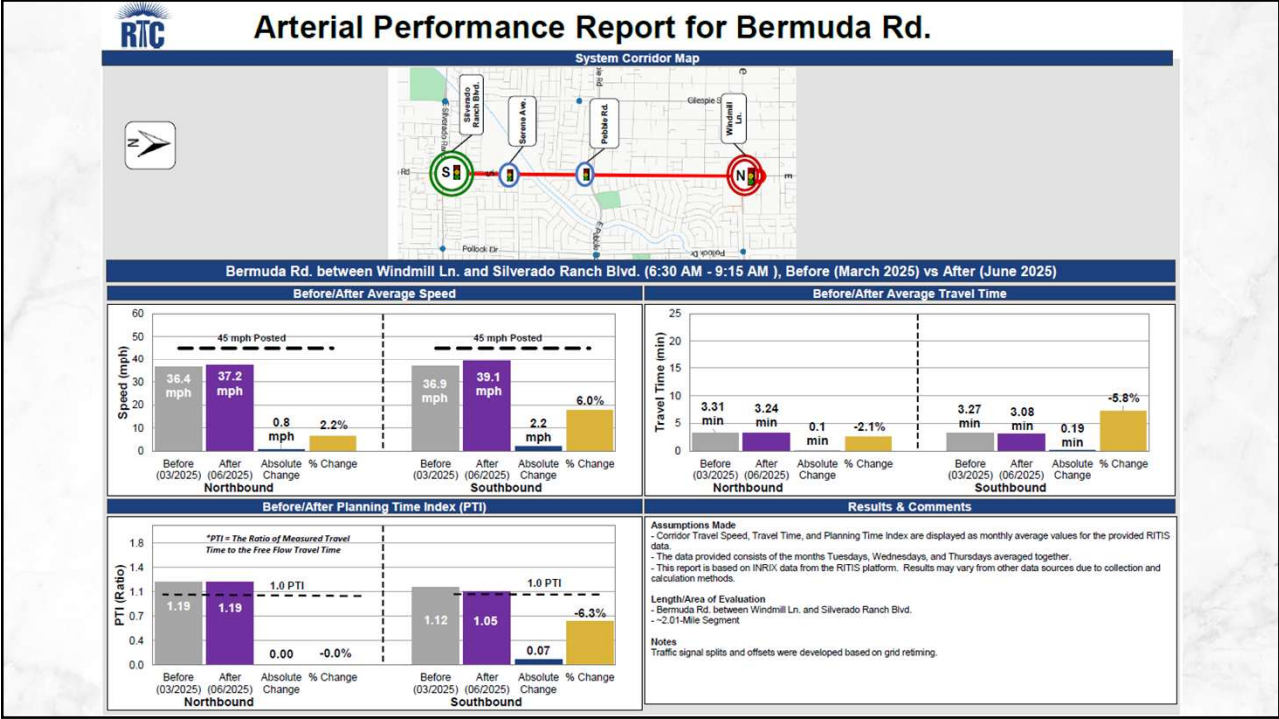
4

BERMUDA

(SILVERADO RANCH TO WINDMILL)

AM PERIOD (6:30AM – 9:15AM)

5



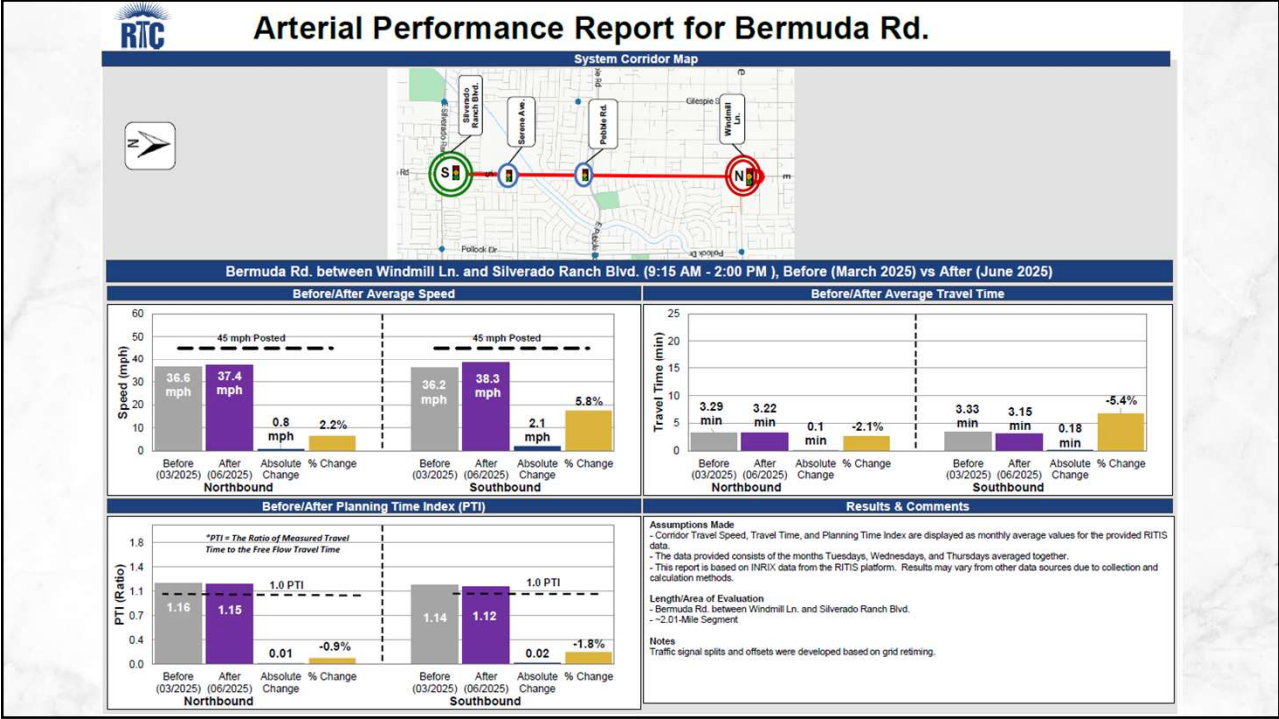
6

BERMUDA

(SILVERADO RANCH TO WINDMILL)

MID-DAY PERIOD (9:15AM – 2:00PM)

7



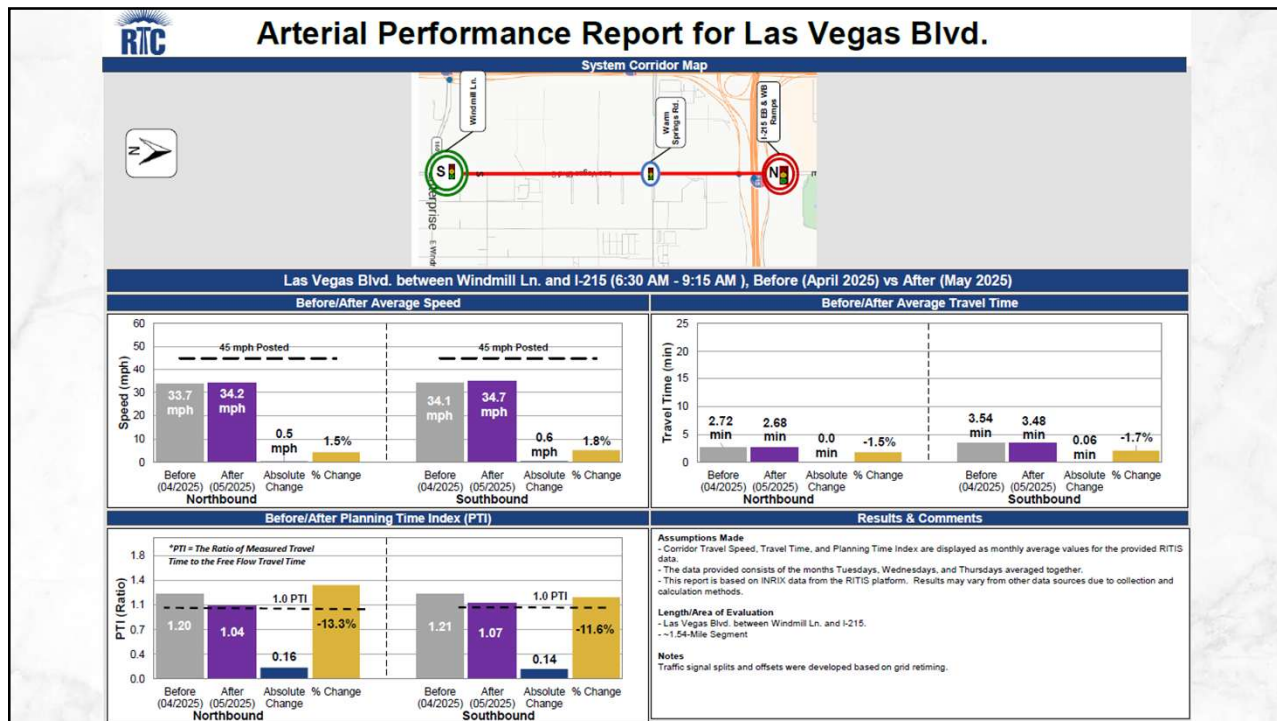
8

LAS VEGAS BLVD

(WINDMILL TO I-215)

AM PERIOD (6:30AM – 9:15AM)

9



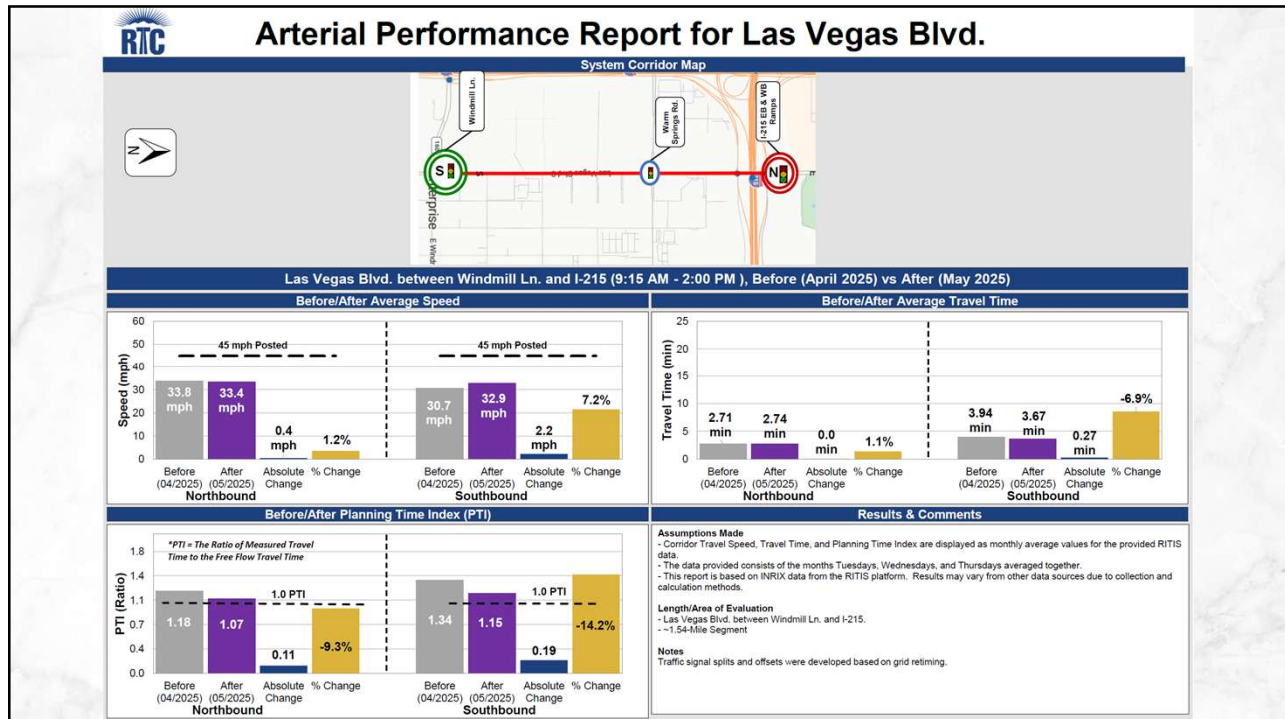
10

LAS VEGAS BLVD

(WINDMILL TO I-215)

MID-DAY PERIOD (9:15AM – 2:00PM)

11



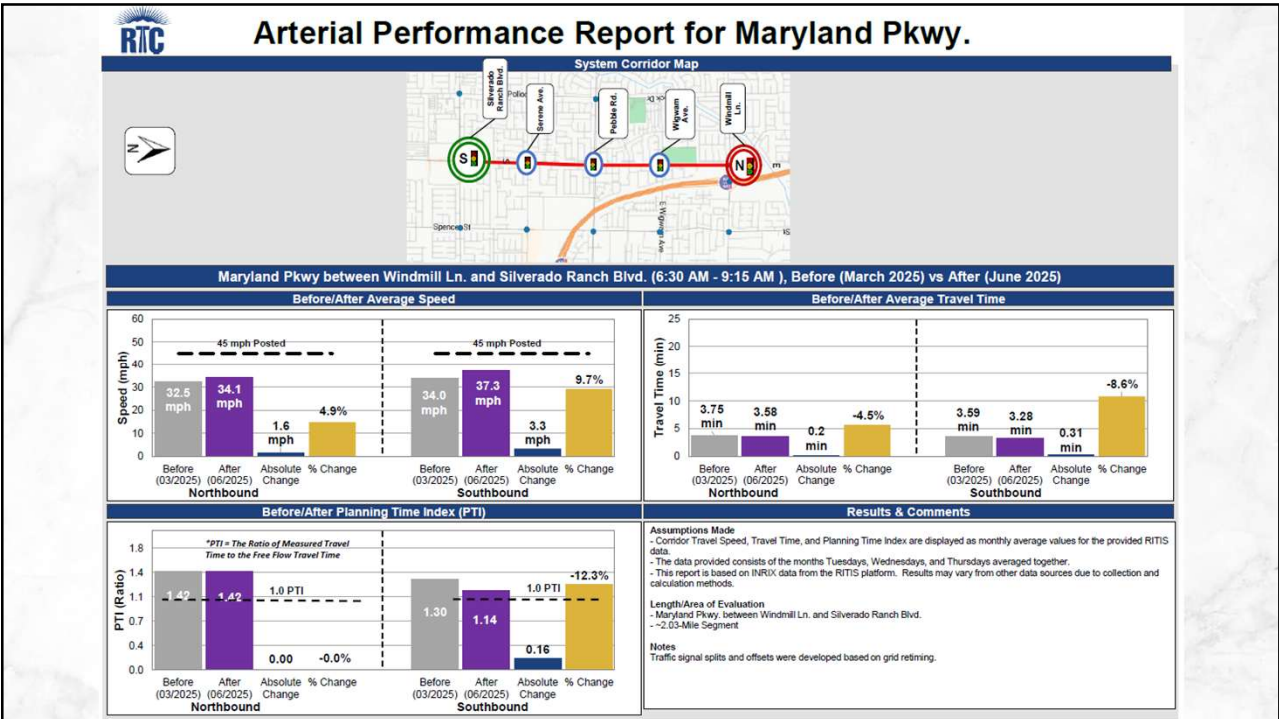
12

MARYLAND

(SILVERADO RANCH TO WINDMILL)

AM PERIOD (6:30AM – 9:15AM)

13



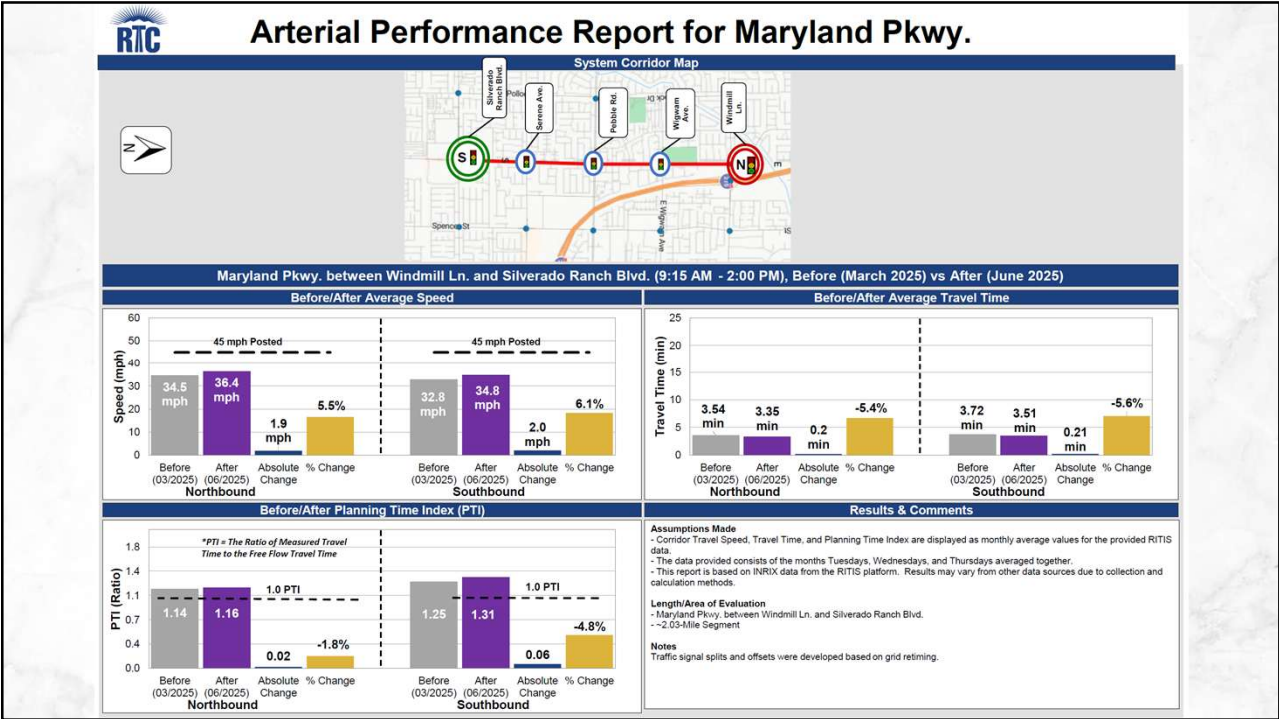
14

MARYLAND

(SILVERADO RANCH TO WINDMILL)

MID-DAY PERIOD (9:15AM – 2:00PM)

15



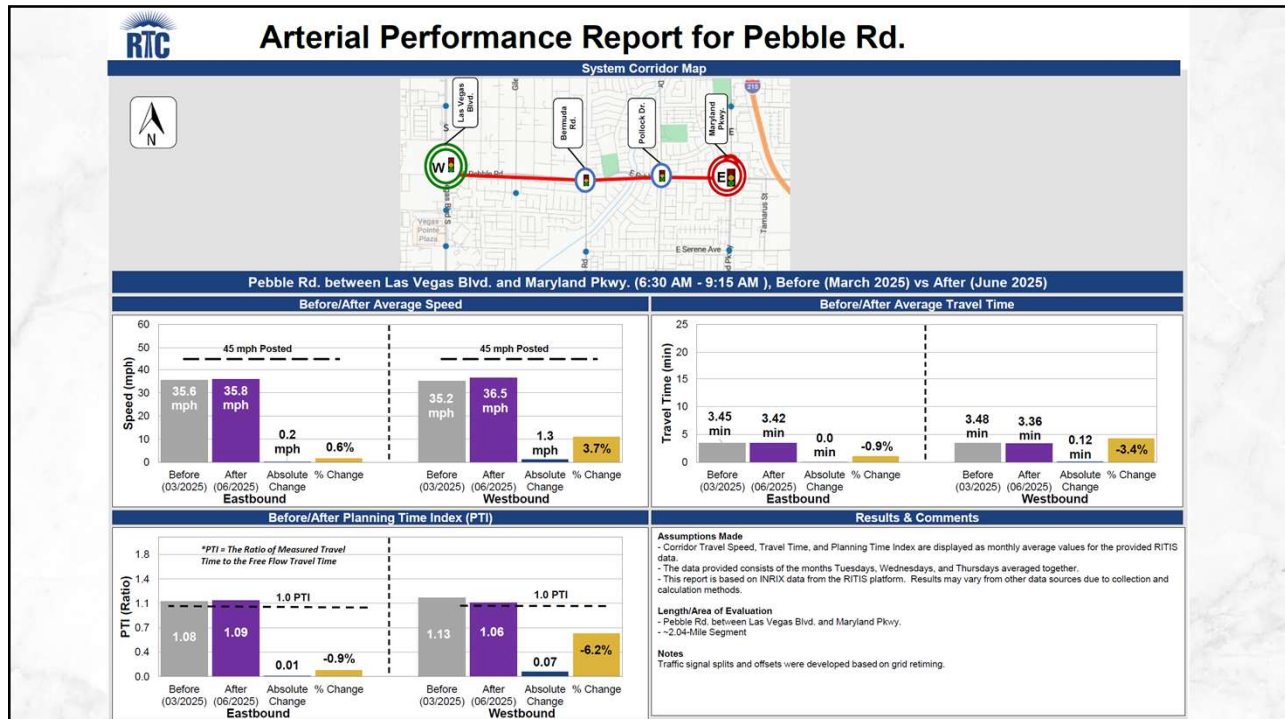
16

PEBBLE

(LAS VEGAS TO MARYLAND)

AM PERIOD (6:30AM – 9:15AM)

17



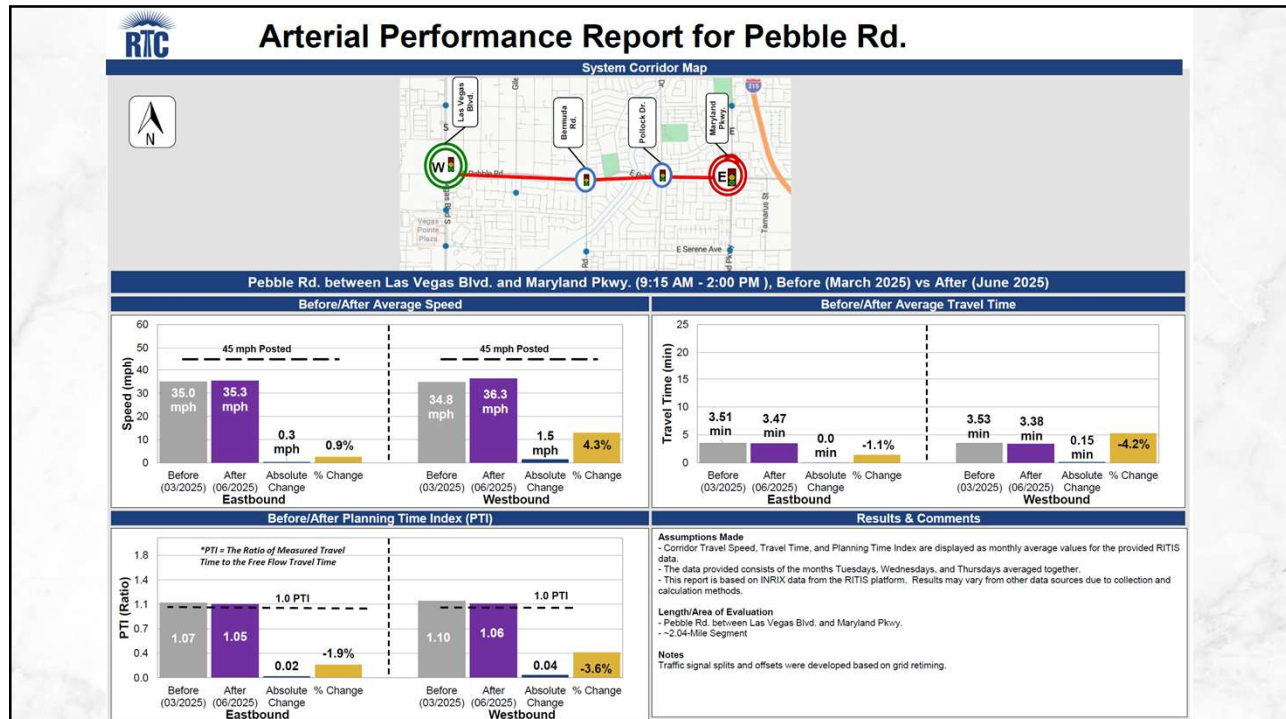
18

PEBBLE

(LAS VEGAS TO MARYLAND)

MID-DAY PERIOD (9:15AM – 2:00PM)

19



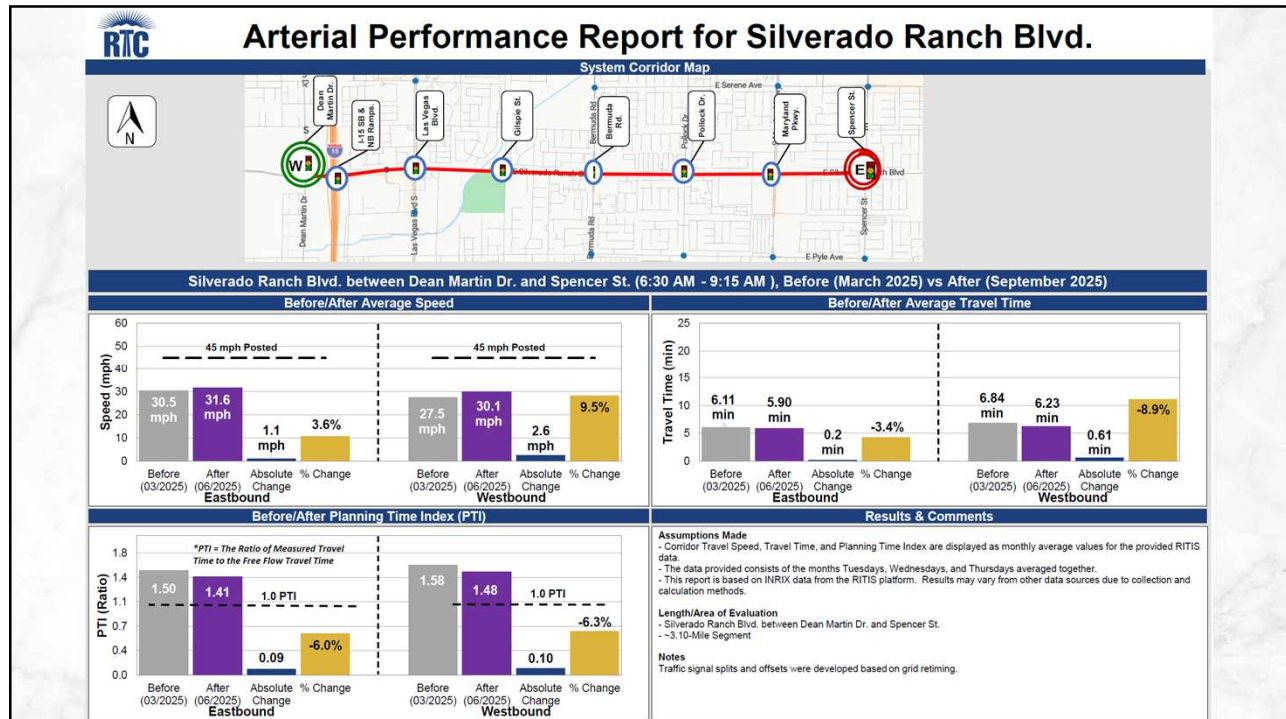
20

SILVERADO RANCH

(DEAN MARTIN TO SPENCER)

AM PERIOD (6:30AM – 9:15AM)

21



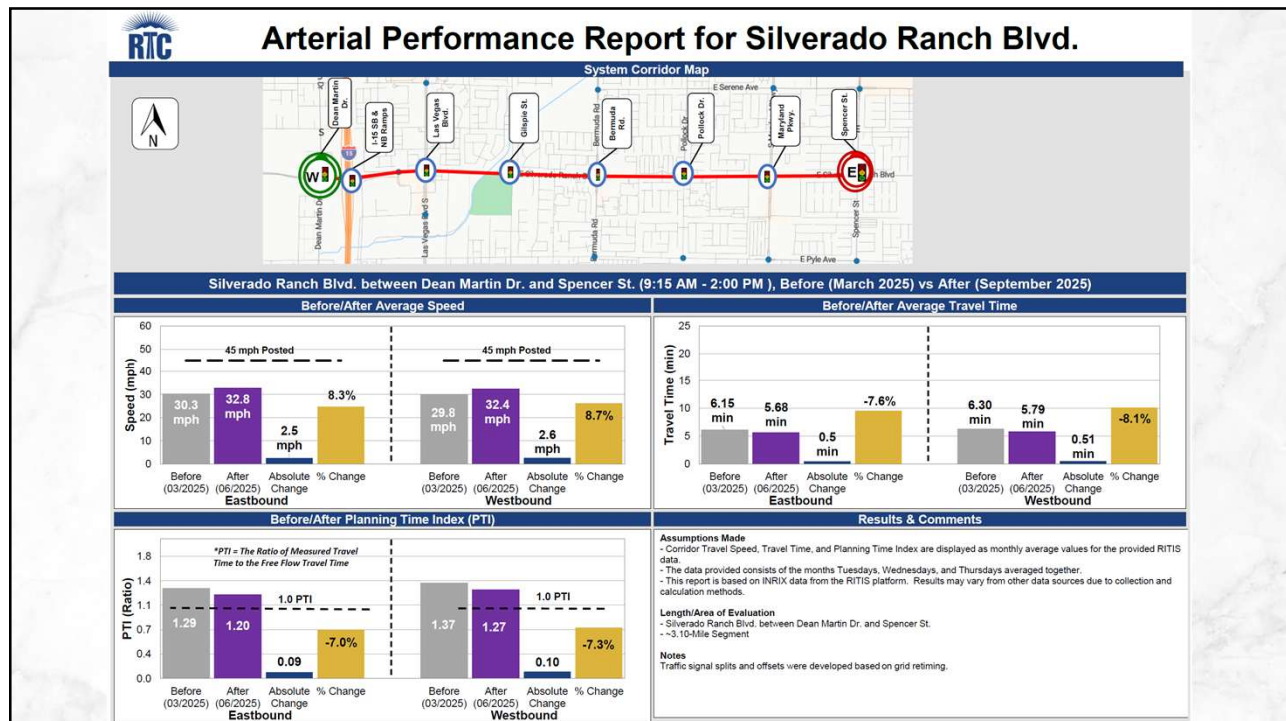
22

SILVERADO RANCH

(DEAN MARTIN TO SPENCER)

MID-DAY PERIOD (9:15AM – 2:00PM)

23



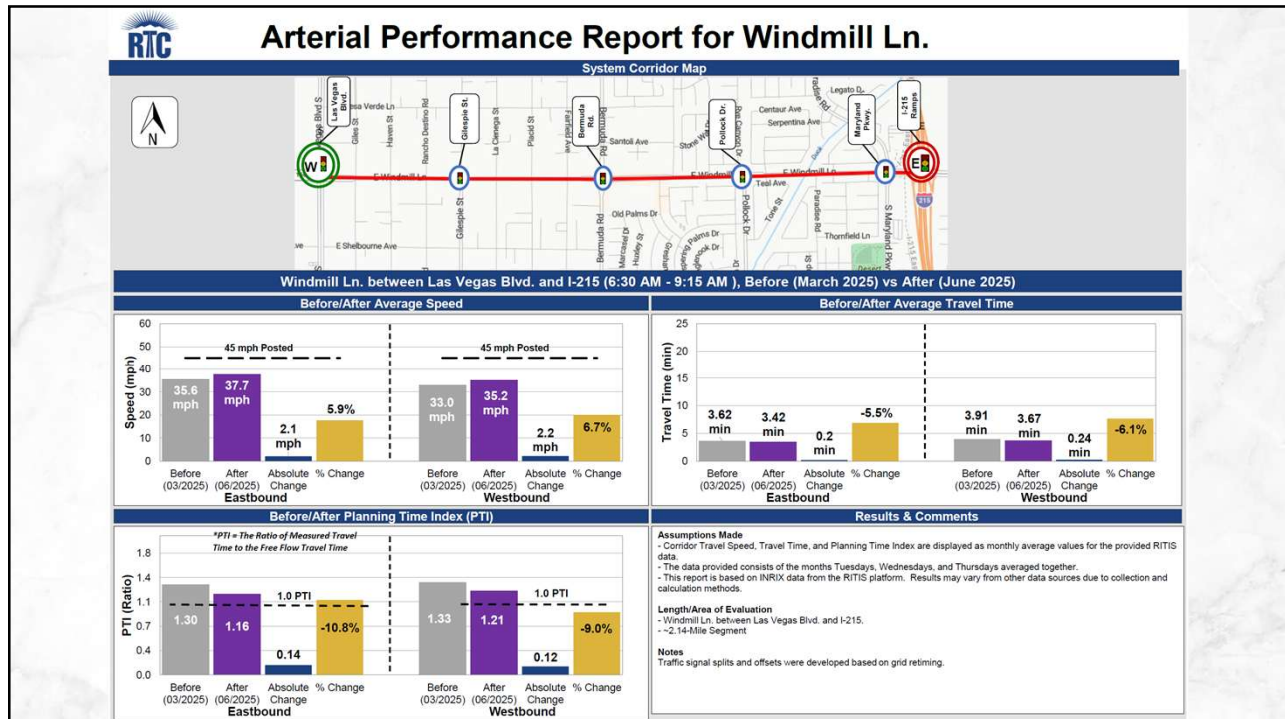
24

WINDMILL

(LAS VEGAS TO I-215)

AM PERIOD (6:30AM – 9:15AM)

25



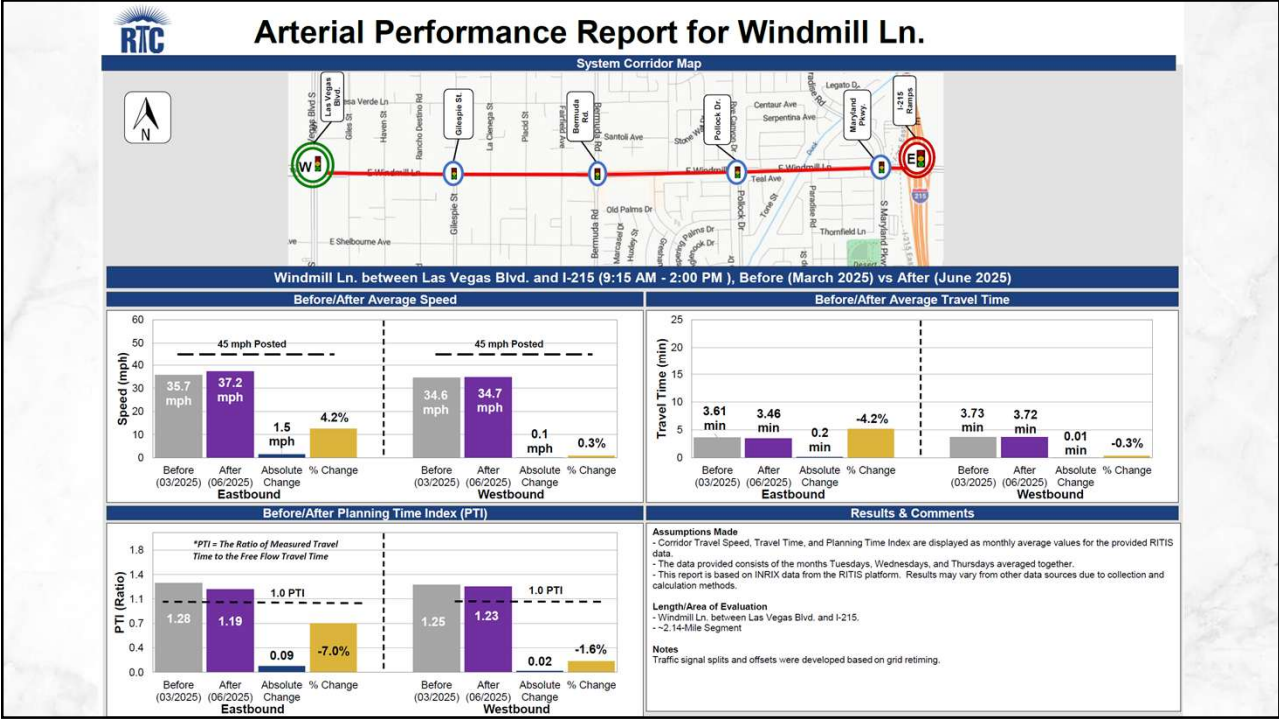
26

WINDMILL

(LAS VEGAS TO I-215)

MID-DAY PERIOD (9:15AM – 2:00PM)

27



28