



Clark County Department of Environment and Sustainability

Robert Burgy, Climate and Sustainability Program Manager

[Robert.Burgy@ClarkCountynv.gov](mailto:Robert.Burgy@ClarkCountynv.gov)



# ALL-IN Clark County and the Process to Establish a Network of Resilience Hubs

January 13, 2026



## Meet Your Speaker



### Robert Burgy

Climate and Sustainability Program Manager  
Clark County Department of Environment and Sustainability

[Robert.Burgy@ClarkCountyNV.gov](mailto:Robert.Burgy@ClarkCountyNV.gov)

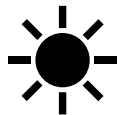
702-455-4430



# AGENDA



# AGENDA



**Understanding  
Climate Hazards in  
Southern Nevada**



**What is ALL-IN  
Clark County?**



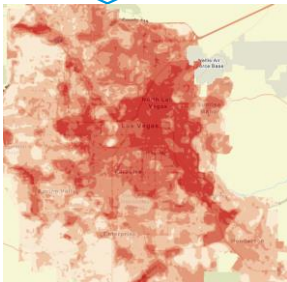
**Implementing  
the Plan: *Case  
Study of  
Establishing a  
Network of  
Resilience  
Hubs***



# UNDERSTANDING SOUTHERN NEVADA'S CLIMATE



## Extreme Heat in Southern Nevada



Heat-Related Illness Visits, Clark County, NV			
2022	2023	2024	2025
1403	2165	2973	1739

Heat-Associated Deaths, Clark County, NV			
2022	2023	2024	2025
165	296	513	85



Hotter Environment



Increased Energy Needed to Cool residences/businesses



Increased Energy Costs



Nevada lawmakers are pushing a bill that would require cities to update master plans with strategies to mitigate the effects of extreme heat, as Las Vegas and Reno experience rapid temperature increases.



# Extreme Heat in Southern Nevada



Water levels at Lake Mead can be seen in photos from 1983 and 2019. (Las Vegas Review-Journal)



# Extreme Heat in Southern Nevada



Source: 8 News Now Las Vegas

## Nearly 50 power poles damaged in Las Vegas windstorm, repair efforts underway

by News 3 Staff | Tue, July 1st 2025 at 8:14 PM  
Updated Tue, July 1st 2025 at 8:15 PM



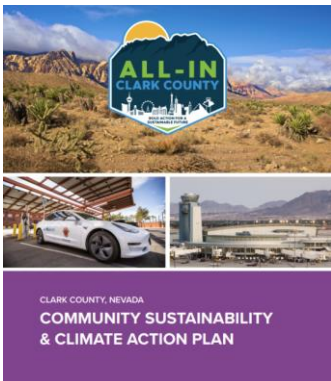
Source: News3 Las Vegas



## WHAT IS ALL-IN CLARK COUNTY?



## What is ALL-IN Clark County?



- a **county-wide planning** effort to address **climate change impacts** in our community
- Focus on **collaborative work** partnering with:
  - Local business and industry
  - Municipal Governments
  - Community organizations
  - Concerned Residents



Clean and Reliable Energy



Connected and Equitable Mobility



Diverse and Circular Economy



Resilient and Healthy Community



Smart Buildings and Development



Sustainable Water Systems



# What is ALL-IN Clark County?



ACTION PLAN

## Resilient and Healthy Community

The *All-In Community Plan* establishes goals, strategies, and actions for each focus area. These are highlighted in the summary matrix, along with indications of alignment with other regional and state plans.

Goal 1: All residents are prepared for the impacts of climate hazards.		Alignment
1.1	Prepare for and reduce the impacts of climate hazards on Clark County residents and visitors.	
1.1.A	Protect workers from heat, toxins, and other dangerous work conditions through advocating for and educating about safety standards.	
1.1.B	Expand Community Emergency Response Team (CERT) programs.	
1.1.C	Offer financial assistance for low-income populations and small businesses to install weatherization and cooling measures.	
1.1.D	Establish a network of <b>Resilience Hubs</b>	



CLARK COUNTY, NEVADA  
COMMUNITY SUSTAINABILITY  
& CLIMATE ACTION PLAN



# What is ALL-IN Clark County?



**SUSTAINABILITY NOW**  
*All-In for a Climate-Smart 2025*

Join us each month for our virtual webinar series to learn, connect, and take action on sustainability!  
EACH WEBINAR WILL BE LIVESTREAMED FROM 1:00 - 1:30 PM PST.

<b>WEDNESDAY, JANUARY 22</b> <b>SUSTAINABLE NEW YEAR'S RESOLUTIONS</b> <small>Tip for eco-consciousness: start in the year.</small>	<b>TUESDAY, FEBRUARY 4</b> <b>PERSONAL ELECTRIFICATION PLANNER</b> <small>Creating personalized plans for upgrading homes and vehicles to all-electric options.</small>	<b>WEDNESDAY, MARCH 26</b> <b>MINIMIZE OUTDOOR WATER USE</b> <small>Remove, Reuse, and Create a Sustainable, Water-Smart Landscape.</small>
<b>THURSDAY, APRIL 10</b> <b>THE BENEFITS OF URBAN FORESTRY</b>	<b>TUESDAY, MAY 20</b> <b>PREPARING FOR SUMMER'S EXTREME HEAT</b>	<b>MONDAY, JUNE 9</b> <b>MONSOON SEASON PREPAREDNESS</b>





# What is ALL-IN Clark County?

**AEG RE+ 25 Action Challenge: Energy, Health & Prosperity**  
September 8th @ 11:30am - 4:30pm | Palazzo G, The Venetian | Las Vegas, NV

**CRITICAL OBSTACLE**

Lack of buy-in and engagement within our networks for energy efficiency projects that can access needed capital and mitigate heat.

Greg Zegas | Robert Burgy | Mark Darden | Adam Grant | Erika Symmonds | Mike Helman

Logos: AEG Clark County, RE+, DNV, NVEnergy, SEIA



Clean and Reliable Energy



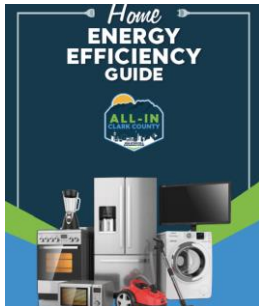
Connected and Equitable Mobility



Diverse and Circular Economy



# What is ALL-IN Clark County?



Smart Buildings and Development



WEDNESDAY, MARCH 26

MINIMIZE OUTDOOR WATER USE

Remove, limit, and create a sustainable, Water Smart landscape.



Sustainable Water Systems

## Regional Priorities and Considerations

Assembly Bill 96 Heat Mitigation Master Plan Integration

December 31, 2025

Prepared By:  
Clark County Department of Environment and Sustainability  
Office of Sustainability



Resilient and Healthy Community



# What is ALL-IN Clark County?

## Regional Climate Collaborative



- **Sustainability Working Group** authorized and supported by an interlocal agreement

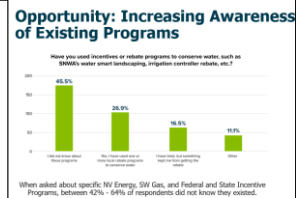
- **Example Activities:**

- Government/Legislative Working Group
- Heat Working Group
- Monthly Collaborative Meetings
- Collaboration on sustainability initiatives
- Sustainability Roadshow

**Nevada AB96 Compliance Dashboard**  
An Interactive Tool for Clark County Heat Mitigation Planning

**About Assembly Bill 96**  
Assembly Bill 96 requires Nevada's larger counties to include a heat mitigation plan in their master plan's conservation element. This dashboard analyzes how Southern Nevada municipalities align with the key requirements, such as providing public cooling spaces, drinking water, cool building practices, and shade.

Cooling Spaces	Drinking Water	Cool Buildings	Shade Cover	Other Measures
Access to public cooling areas.	Availability of public water sources.	Practices like cool roofs & materials.	Trees & structures over paved surfaces.	Other mitigation strategies.

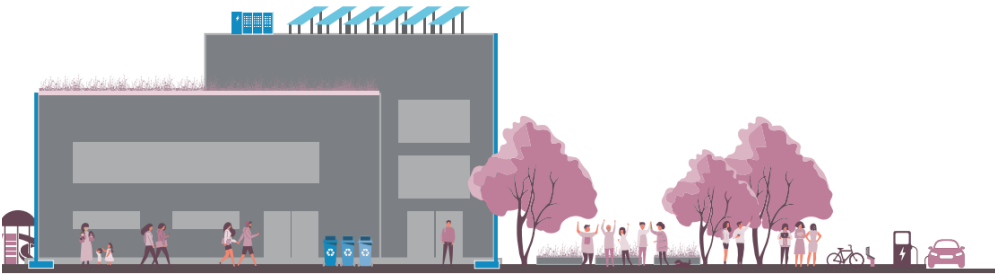


# Implementing the Plan: *What are Resilience Hubs*



# Resilience Hubs: *What Are They?*

**RESILIENCE HUBS** use a **physical space** - a building and its surrounding infrastructure - **to meet numerous goals, both physical and social**. Resilience hubs are an opportunity to efficiently improve emergency management, reduce climate pollution and **enhance community resilience**. These spaces also provide opportunities for communities to become more self-determining, socially connected, and successful in the long-term.



**Energy Reliability is an essential component!**



[USDN ResilienceHubsGuidance-1.pdf](#)

[Resilience Hubs - USDN: Urban Sustainability Directors Network](#)



# Resilience Hubs: *What are the Characteristics of a resiliency hub?*

- 
**Resilient Programing and Services**  
 Offering additional services and programs that build relationships, promote community preparedness, and improve residents' health and well-being.
- 
**Resilient Structure**  
 Strengthening the resilience of the facility to ensure that it meets operational goals in all conditions.
- 
**Resilient Power**  
 Ensuring reliable backup power to the facility during a hazard while also improving the cost-effectiveness and sustainability of operations in all three operating modes.
- 
**Resilient Communications**  
 Ensuring the ability to communicate within and outside the service area during disruptions and throughout recovery.
- 
**Resilient Operations**  
 Ensuring personnel and processes are in place to operate the facility in all conditions.



# Resilience Hubs: *Six Core Components and Three Modes of Operation*

## Six Core Components

## Three Modes of Operation



PROGRAMS AND SERVICES



POWER SYSTEMS AND BACK-UP



BUILT NATURAL SPACE



Operations and Maintenance



Accessibility and Transportation



INFORMATION AND CONNECTIVITY



Everyday



Disruption



Recovery



# Implementing the Plan: *Case Study of Establishing a Network of Resilience Hubs*



# Step One: Convene Stakeholders



# Step Two: Review Stakeholder Feedback and Implementation Blueprints

**Implementation Blueprint Detailed Worksheet**

Action: \_\_\_\_\_

Organization Name: \_\_\_\_\_

Implementation Role (circle one):  
 Champion    Partner    Promoter    Student

If this action is fully implemented, what would success look like?  
 (For example, success could look like a 20% reduction in municipal energy use by the end of 2025. Be specific and tie to metrics, if possible.)

Which organization(s) do you think could champion this action?  
 (The champion will drive and oversee implementation of the action and has ultimate responsibility for ensuring implementation happens.)

What resources (time, money, expertise, etc.) will need to be allocated?  
 (For example, we will need specific data or expertise, to hire an additional staff member to oversee the project to seek grant funding to cover the cost; to reallocate budget to support this initiative; to assign staff members to work on this as part of their existing role.)



If this action is fully implemented, what does success look like?



What Resources will need to be allocated?



How do we ensure equitable consideration in Implementation



Any Specific Timeframes or Deadlines to Consider?



Which Organizations Could Champion This Action?



What are some possible funding sources to be leveraged or secured?



Do you foresee and potential challenges that could arise during implementation?



# Step Three: Develop Implementation Framework and Kickoff Implementation Activities



## All-In Clark County Resilience Hub Advisory Group Proposal

**Resilient & Healthy Community 1.1.D: Establish a network of Resilience Hubs.**

### Resilience Hub Advisory Group Description:

The Resilience Hub Advisory Group will consist of **community organizations, institutions, and government partners in Southern Nevada** that work together to **shape the creation of a network of resilience hubs in Clark County.**

### Objective of the Resilience Hub Advisory Group:

The All-In Resilience Hub Advisory Group's **objective is to create a Resource and 'How To' Guide for establishing a Resilience Hub in Southern Nevada.** To develop these resources, it is expected that the Advisory Group, with the help of a facilitator and the All-In Team, will:

- **Meet regularly over the course of 4-6 months**
- Develop a set of criteria for Resilience Hubs in Southern Nevada
- Disseminate materials related to educating the community on the benefits Resilience Hubs can bring to Southern Nevada



# Step Three: Develop Implementation Framework and Kickoff Implementation Activities





# Step Four: Develop and Disseminate "Guide to Establishing a Resilience Hub in Southern Nevada"



Resilience Hubs are community-serving facilities augmented to support residents, coordinate communication, distribute resources, and reduce carbon pollution while enhancing quality of life.



Self-Screening for a Resilience Hub



How to Develop a Resilience Hub



Securing Funding



Considerations for Southern Nevada



Existing Resources



Example Hubs



# Step Five: Develop a funding Prospectus



Bundled Investment Opportunities



Project Snapshots



Outcomes & Measurement



Governance & Risk Mitigation



Funder Recognition & Engagement

## Transforming Lives in Southern Nevada: A Bundled Investment Prospectus

### 1) Executive Summary

This prospectus bundles high-impact, shovel-ready projects across two trusted community hubs—The After Market and CHR Inc. (Caring, Helping and Restoring Lives)—to accelerate outcomes for residents across Las Vegas and Clark County. Investments focus on food security, workforce readiness, mental health, resilient power, accessibility, and connectivity. Packages are designed for private foundations, high-wealth individuals, and Las Vegas-focused corporations, with tiered options enabling single-funder or co-investment.



## High Level Insights and Conclusion

*Helpful Steps for Interlocal Collaboration*



Identify Goal



Convene Stakeholders



Review Stakeholder  
Feedback



Develop  
Implementation  
Framework



Kickoff  
Implementation  
Activities



Monitor and Adjust  
Framework and  
Activities Throughout

27



## High Level Insights and Conclusion

Resilience Hubs are **Community-Serving facilities** that are augmented to support residents, coordinate communication, distribute resources, and MORE

**Interlocal Collaboration is Essential** in successfully implementing regional initiatives

It is important to consider **how our work helps community members and serves a powerful purpose of supporting current and future generations.**

28



Clark County Department of Environment and Sustainability

Robert Burgy, Climate and Sustainability Program Manager

[Robert.Burgy@ClarkCountynv.gov](mailto:Robert.Burgy@ClarkCountynv.gov)

January 13, 2026



# ALL-IN Clark County and the Process to Establish a Network of Resilience Hubs