

**UNIFORM STANDARD DRAWINGS  
CLARK COUNTY AREA  
VOLUME II**

**REVISION SET I  
1995**

<b>DRAWING NUMBER AND TITLE</b>	<b>SHEET NUMBER(S)</b>	<b>NATURE OF CHANGE</b>	<b>APPROVAL DATE</b>
404.409 Base Adaptor Plate...	1 & 2	Revised to be consistent with Volume I.	2/11/93
404.1013 Signal Assemblies A-6T	1	Revised to meet arrow indication policy adopted by RTC.	2/11/93
404.1015 Signal Assemblies A-8T, A-9T	1	"	"
404.1016 Signal Assemblies A-10T, A-11T	1	"	"
404.1017 Signal Assemblies A-12T, A-13T	1	"	"
404.1023 Mast Arm Signal Assemblies M-3, M-2	1	"	"
404.1024 Signal Assemblies B-1T, B-2T, B-3T	1	"	"
404.1025 Signal Assemblies B-5T, B-6T	1	"	"
404.1028 Signal Assemblies B-12T, B-13T	1	"	"
404.415 Type III Pole with Illumin. Street Name Sign	1	Revised dimension between pole and sign.	3/11/93
404.204 Type "D" Foundation	2	Revised to show foundation "crash cap".	7/8/93
404.205 Type "E" Foundation	1	"	"

<u>DRAWING NUMBER AND TITLE</u>	<u>SHEET NUMBER(S)</u>	<u>NATURE OF CHANGE</u>	<u>APPROVAL DATE</u>
404.206 Type "F" Foundation	1	Revised to show foundation "crash cap".	7/8/93
404.207 Type "G" Foundation	1	"	"
404.208 Type "H" Foundation	1	"	"
404.209 Type "L" Foundation	1	"	"
404.406 Type XX-30'-0" Signal and Luminaire Pole	1	Added luminaire arm data table; changed luminaire to cut-off type.	"
404.406 Type XX-30'-0" Signal and Lumin. Pole Details	2	Dimension corrections.	"
404.406 Type XX-A-30'-0" Signal and Luminaire Pole	3	Added luminaire arm data table; changed luminaire to cut-off type.	"
404.406 Type XX-A-30'-0" Signal and Lumin. Pole Details	4	Dimension corrections.	"
404.406 Loading Information	5	Pole loadings revised to typical "worst case" loading.	"
404.1300 Pole Location & Signal Mounting at Intersection	1	Sidewalk ramp position shown; allow use of Type 1-B Pole also.	"
404.1300 Pole Location... (Center of Return)	2	Moved signal pole out of "ramp" area.	"
404.1301 Pole Location...Right Turn Islands	1	Added ADA compliance note.	"
404.1302 Future Pole Location (Except...Las Vegas)	1	Retitled as "Case I" Sheet 1 of 2.	"
404.1305 Future Pole Location (City of Las Vegas)	1	Renumbered to 404.1302 Sheet 2 of 2; Retitled "Case II"; no longer just for CLV; clarified wheelchair clearance note.	"
404.1019 Signal Assemblies A-16T	1	Note added to allow optional louvering of RYG ball indications.	5/12/94

<b><u>DRAWING NUMBER AND TITLE</u></b>	<b><u>SHEET NUMBER(S)</u></b>	<b><u>NATURE OF CHANGE</u></b>	<b><u>APPROVAL DATE</u></b>
404.1027 Signal Assemblies B-10, B-11T	1	Note added to allow optional louvering of RYG ball indications.	5/12/94
404.1029 Signal Assemblies B-14T	1	"	"
404.1030 Protected/Permissive M-5 Signal Heads	1	"	"
404.1031 Protected/Permissive M-5 Signal Heads	1	"	"

Released July 1995

## **FOREWORD**

# **UNIFORM STANDARD DRAWINGS FOR PUBLIC WORKS' CONSTRUCTION, OFFSITE IMPROVEMENTS, CLARK COUNTY AREA, NEVADA VOLUME II**

**Regional Transportation Commission  
Adoption By Commission Action  
April 8, 1992**

The Uniform Standard Drawings for Public Works Construction may be revised by issuance of revisions or supplements to correct errors and omissions found in these drawings and to reflect advanced thinking and the changing technology of the construction industry. Each revision will supersede any previous pertinent drawing. **This volume contains revisions made thru July 1995.**

To implement this end a Specifications Committee has been established as a permanent organization to continually study and recommend changes to the standard drawings. Interested parties may address suggested changes and questions to the Regional Transportation Commission, 301 East Clark Avenue, Suite 300, Las Vegas, Nevada, 89101.

**UNIFORM STANDARD DRAWINGS, CLARK COUNTY AREA**

**TABLE OF CONTENTS**

**VOLUME II**  
**SECTION 404**  
**TRAFFIC SIGNALS**

**DRAWING NUMBER**

**SYMBOLS**

404.001	Standard Symbols for Traffic Signal Drawings (2 sheets)
404.002	Quadrant Detail

**PULL BOXES**

404.110	No. 3 1/2 Pull Box
404.120	No. 5 Pull Box
404.121	Reinforced Plastic Mortar Service Box Assembly #5
404.130	No. 7 Pull Box
404.131	Reinforced Plastic Mortar Service Box Assembly #7
404.139	Steel Pull Boxes
404.140	Steel Pull Box Cover
404.141	Pull Box Foundation

**FOUNDATIONS**

404.201	Type "A" Foundation
404.202	Type "B" Foundation
404.203	Type "C" Foundation
404.204	Type "D" Foundation (2 sheets)
404.205	Type "E" Foundation
404.206	Type "F" Foundation
404.207	Type "G" Foundation
404.208	Type "H" Foundation
404.209	Type "L" Foundation
404.211	Type "I" Foundation
404.213	Type "J" and "K" Foundation

## **SECTION 404**

### **TRAFFIC SIGNALS** **CONTINUED**

#### **DRAWING NUMBER**

#### **CABINET**

404.304	Type V Cabinet
404.305	Type VI Cabinet
404.307	Type VIII Cabinet
404.308	Type IX Cabinet
404.309	School Flasher Cabinet--Class 41-000 Flashing Beacon
404.310	Wiring Diagram for Timer Controlled Operation

#### **PRIORITY VEHICLE PREEMPTION SYSTEM**

404.320	Priority Vehicle Preemption System (5 sheets)
---------	---

#### **POLES AND POSTS**

404.400(SH1)	School Flashing Sign on Pole with Luminaire
404.400(SH2)	School Flashing Sign on Type-III Pole
404.401(SH1)	Pedestrian Push Button Post for Special Sign (8'-6")
404.401(SH2)	Pedestrian Push Button Post for 2-½" Post Top Mounting
404.402	Signal Standard Type 1-A, 1-B
404.403	Sign Post with School Sign Mounted (2 sheets)
404.404	30' Signal and Luminaire Standard -- Type III
404.405	Pedestal for Controller Cabinets
404.406	Type XX -- 30' Signal and Luminaire Pole (6 sheets)
404.407(SH1)	Type XX -- 20' Signal Pole (45' or Less Mast Arms)
404.407(SH2)	Type XXA -- 20'-0" (50' through 60' Mast Arms) Signal Pole
404.408	30' 7 Gage Signal and Luminaire Standard -- Davit Type for 400 Hps Watt Luminaire
404.409(SH1)	Base Adaptor Plate for Type "H" Foundation
404.409(SH2)	Base Adaptor Plate for Type "L" Foundation
404.410	30' Luminaire with School Flashing Sign
404.411	School Sign Mounted on a Traffic Signal Standard
404.412	School Sign Pole Type XX -- 30'
404.413	School Sign Pole Type XX -- 20'
404.414	Type 623.02.01 Pole with Illuminated Street Name Sign
404.415	Type III Pole with Illuminated Street Name Sign

## **SECTION 404**

### **TRAFFIC SIGNALS** **CONTINUED**

#### **DRAWING NUMBER**

#### **POLES AND POSTS (CON'T)**

404.416	Type XX Pole with Illuminated Street Name Sign
404.417	Street Name Sign Internally Illuminated
404.418	Sign Mounting Illustration
404.420	Block Number Sign

#### **MAST ARMS AND ASSEMBLIES**

404.500	Signal Mast Arm with Welded Back Brace
404.501	Back Brace Assembly for Signal Mast Arm
404.502	One Bolt Arm Attachment Clamp Assembly
404.503	Retrofit Streetlight Mast Arm

#### **DRILLING DETAILS**

404.600	Pole Drilling Details
404.601	Island Signal Pole Details for 10' Pole

#### **ISLAND EQUIPMENT**

404.700	Island Signal Location
---------	------------------------

#### **DETECTORS**

404.800	General Specifications -- Roadway Embedded Loop Wires
404.801	Model Specifications -- Detector Loop Sealant (2 sheets)
404.810	Sawcut Details for Induction Loops
404.811	Details at Pull Box and Sawcuts
404.820	1 Induction Loop for 1 Travel Lane
404.821(SH1)	1 Induction Loop for 2 Travel Lanes
404.821(SH2)	2 Induction Loop for 2 Travel Lanes
404.822(SH1)	1 Induction Loop for 3 Travel Lanes
404.822(SH2)	3 Induction Loops for 3 Travel Lanes
404.823(SH1)	1 Induction Loop for 4 Travel Lanes
404.823(SH2)	4 Induction Loop for 4 Travel Lanes
404.825	3 Induction Loops for 3 Travel Lanes
404.826	Multiple Loop System for Left Turn Pocket

**SECTION 404**

**TRAFFIC SIGNALS**  
**CONTINUED**

**DRAWING NUMBER**

**DETECTORS (CON'T)**

404.827	Multiple Loop System for Left Turn Pocket
404.828	Type "Quadrupole" Loop Installation
404.829	Wire Diagram for Multiple Loop System for Left Turn Pocket
404.830	Circular Induction Loops for Travel Lanes
404.851	Pedestrian Push Button Detectors

**BACK PLATES**

404.900	Louvered Backplate for Mast Arm Mounted Signal
404.901	Louvered Backplate for Pole Mounted Signal
404.902	Louvered Backplate for 5 Section Signal Head
404.903	Louvered Backplate for 5 Section Signal Head

**SIGNAL UNITS**

404.1005	Bill of Materials Signal-Assemblies
----------	-------------------------------------

**SIGNAL ASSEMBLIES**

404.1011	Types: A-1, A-2T, A-3
404.1012	Types: A-4T, A-5T
404.1013	Type: A-6T
404.1015	Types: A-8T, A-9T
404.1016	Types: A-10T, A-11T
404.1017	Types: A-12T, A-13T
404.1018	Types: A-14T, A-15T
404.1019	Type: A-16T
404.1020	Type: A-17T

**MAST ARM SIGNAL ASSEMBLIES**

404.1022	Types: M-2A, M-3A
404.1023	Types: M-3, M-2

## **SECTION 404**

### **TRAFFIC SIGNALS** **CONTINUED**

#### **DRAWING NUMBER**

#### **SIGNAL ASSEMBLIES**

404.1024	Types: B-1T, B-2T, B-3T
404.1025	Types: B-5T, B-6T
404.1026	Types: B-7T, B-8T, B-9T
404.1027	Types: B-10, B-11T
404.1028	Types: B-12T, B-13T
404.1030	Protective/Permissive M-5 Signal Heads
404.1031	Protective/Permissive M-5 Signal Heads, Assemblies and Part List (3 sheets)
404.1032	Pedestrian Signal Assemblies W-0T, W-1, W-2T, W-3T, W-1T
404.1033	Z-Crate Visor
404.1034	Pedestrian Push Button Signal Detail

#### **VISORS AND LOUVERS**

404.1100(SH1)	Visors for 8" Signal
404.1100(SH2)	Louvers and Visors for 12" Signal
404.1100(SH3)	Geometrically Programmed Louver
404.1101	Backplate and Signal Head Assembly

#### **SIGNAL HARDWARE**

404.1200	Miscellaneous Signal Mounting Hardware
404.1201	Pole Plate Details
404.1202	Miscellaneous Signal Mounting Hardware
404.1203	Elevator Plumbizer
404.1204	Pole Plate with Wire Guide Details
404.1205	4 Way Center Hub
404.1206	Standard Malleable Pipe Hardware -- 1 ½" IPS
404.1207	Post Top Mounted Adapter with Terminal Compartment
404.1208	Side Bracket Mounted Adapter with Wire Guide
404.1210	One Way Mount
404.1211	One Way Mount for 3M Signals
404.1212	One Way Mount Detail

**SECTION 404**

**TRAFFIC SIGNALS**  
**CONTINUED**

**DRAWING NUMBER**

**EQUIPMENT ORIENTATION ON SIGNAL POLES**

- 404.1300(SH1) Pole Location and Signal Mounting at Intersection
- 404.1300(SH2) Pole Location and Signal Mounting at Intersection (Center of Return)
- 404.1301 Pole Location and Signal Mounting on Right Turn Island
- 404.1302(SH1) Future Pole Location Case I (Except City of Las Vegas)
- 404.1302(SH2) Future Pole Location Case II
- 404.1306 Typical Intersection Conduit Layout

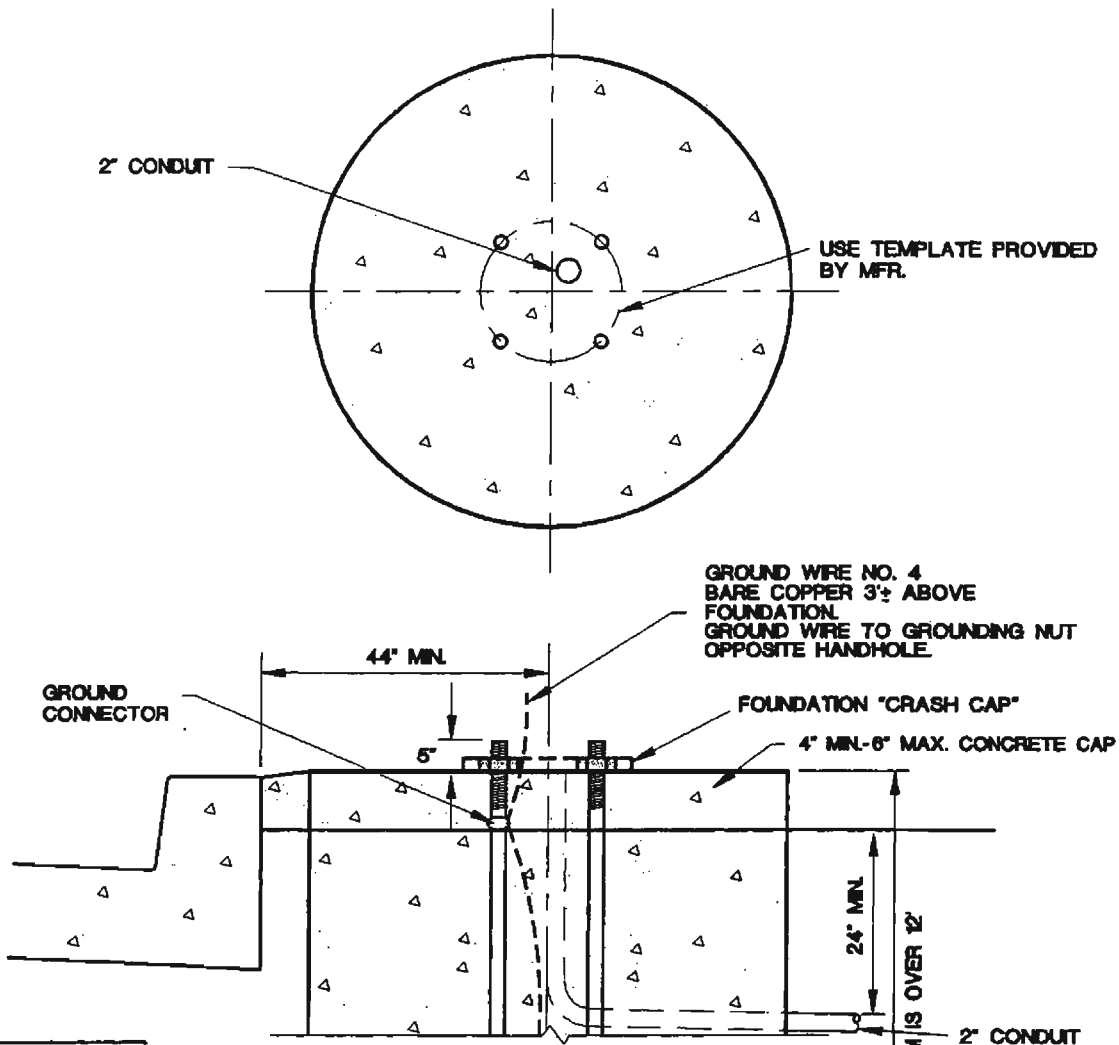
**MISCELLANEOUS**

- 404.1410 12" Arrow Lens
- 404.1412 Single Meter Padmount Service (2 sheets)
- 404.1413 120/240V, AC Service Pole
- 404.1414 Auxiliary Cabinet Equipment Wiring
- 404.1418 Installation of Conduit into Pull Box from Lip of Trench Curb
- 404.1419 Installation of Conduit
- 404.1422 Specification for PVC Coated Iron Conduit

Released July 1995

2" CONDUIT

USE TEMPLATE PROVIDED BY MFR.



GROUND WIRE NO. 4 BARE COPPER 3" ABOVE FOUNDATION. GROUND WIRE TO GROUNDING NUT OPPOSITE HANDHOLE.

GROUND CONNECTOR

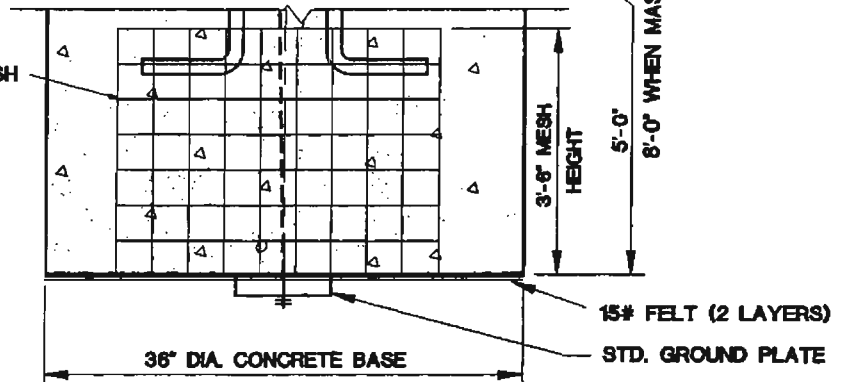
FOUNDATION "CRASH CAP"

4" MIN.-6" MAX. CONCRETE CAP

2" CONDUIT

ANCHOR BOLTS	
POLE GA.	BOLT "E"
11	SEE POLE DRAWING
7	1-1/8" X 40" X 4"
3	1-1/4" X 44" X 4"

6"X6" WIRE MESH 10 GA.



**SPECIFICATION REFERENCE**

623G.03.06 FOUNDATION  
623T.02.02 ANCHOR BOLT

**UNIFORM STANDARD DRAWINGS  
CLARK COUNTY AREA**

**TYPE "D" FOUNDATION  
(FOR DRAWING NO. 404.404)**

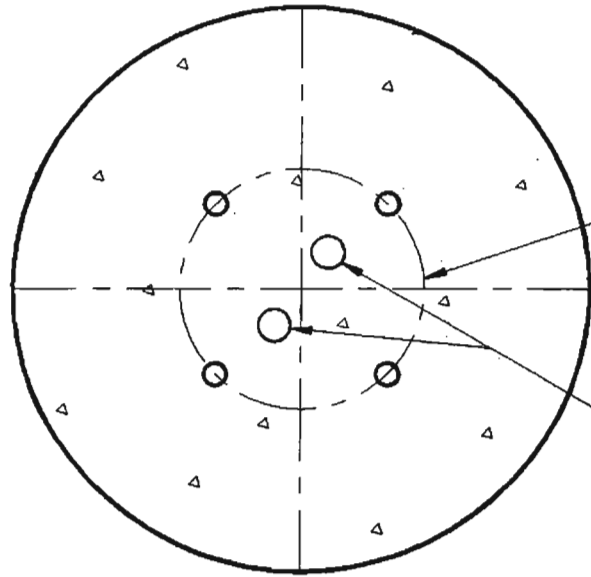
DATE 7-8-93

DWG. NO. 404.204

SHEET 2 OF 2

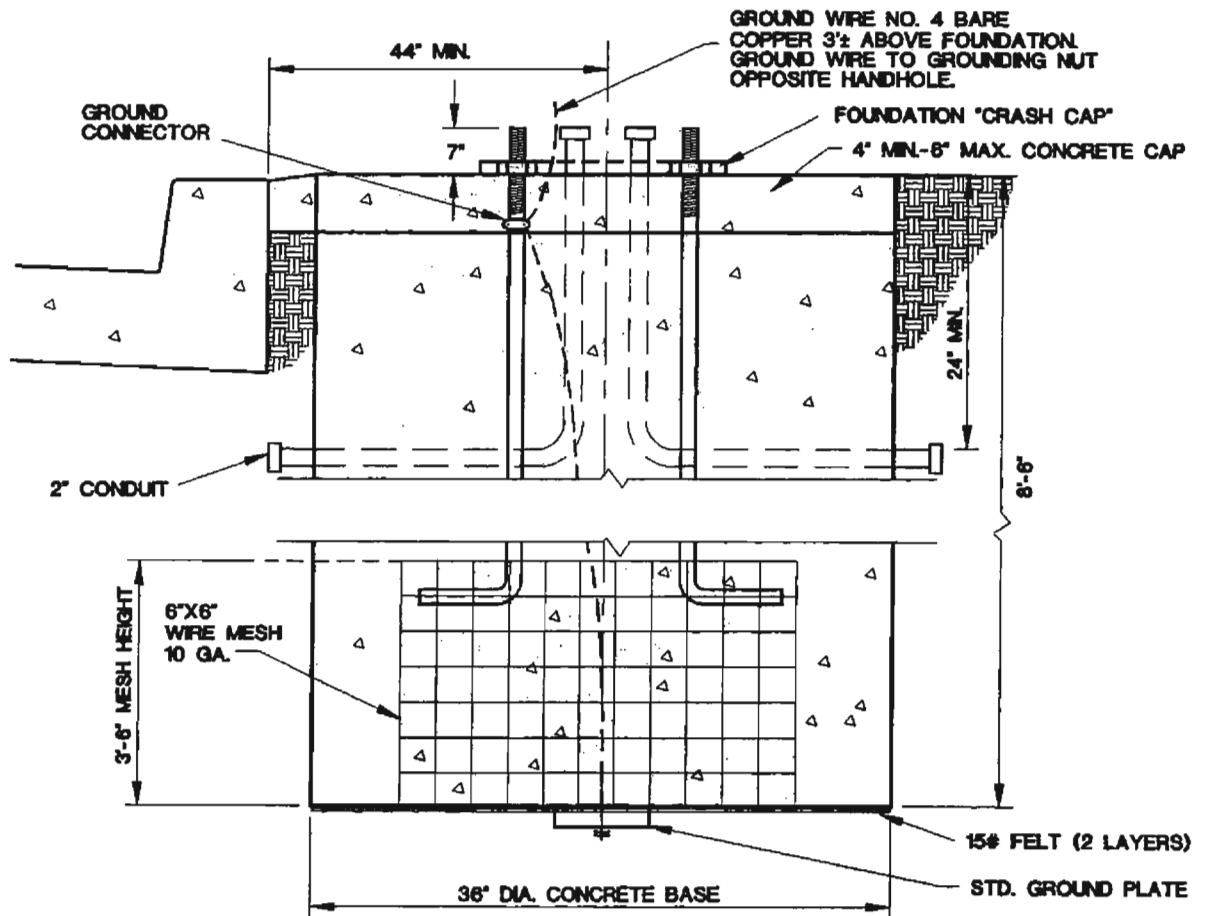
**NOTES:**

- ANCHOR BOLTS SHALL BE GALVANIZED STEEL WITH NUT AND WASHER.



USE TEMPLATE PROVIDED BY MFR.

2" CONDUIT



GROUND WIRE NO. 4 BARE COPPER 3'± ABOVE FOUNDATION  
GROUND WIRE TO GROUNDING NUT OPPOSITE HANDHOLE.

FOUNDATION "CRASH CAP"

4" MIN.-6" MAX. CONCRETE CAP

GROUND CONNECTOR

44" MIN.

2" CONDUIT

8'-6"

3'-6" MESH HEIGHT  
6"X6" WIRE MESH  
10 GA.

15# FELT (2 LAYERS)

STD. GROUND PLATE

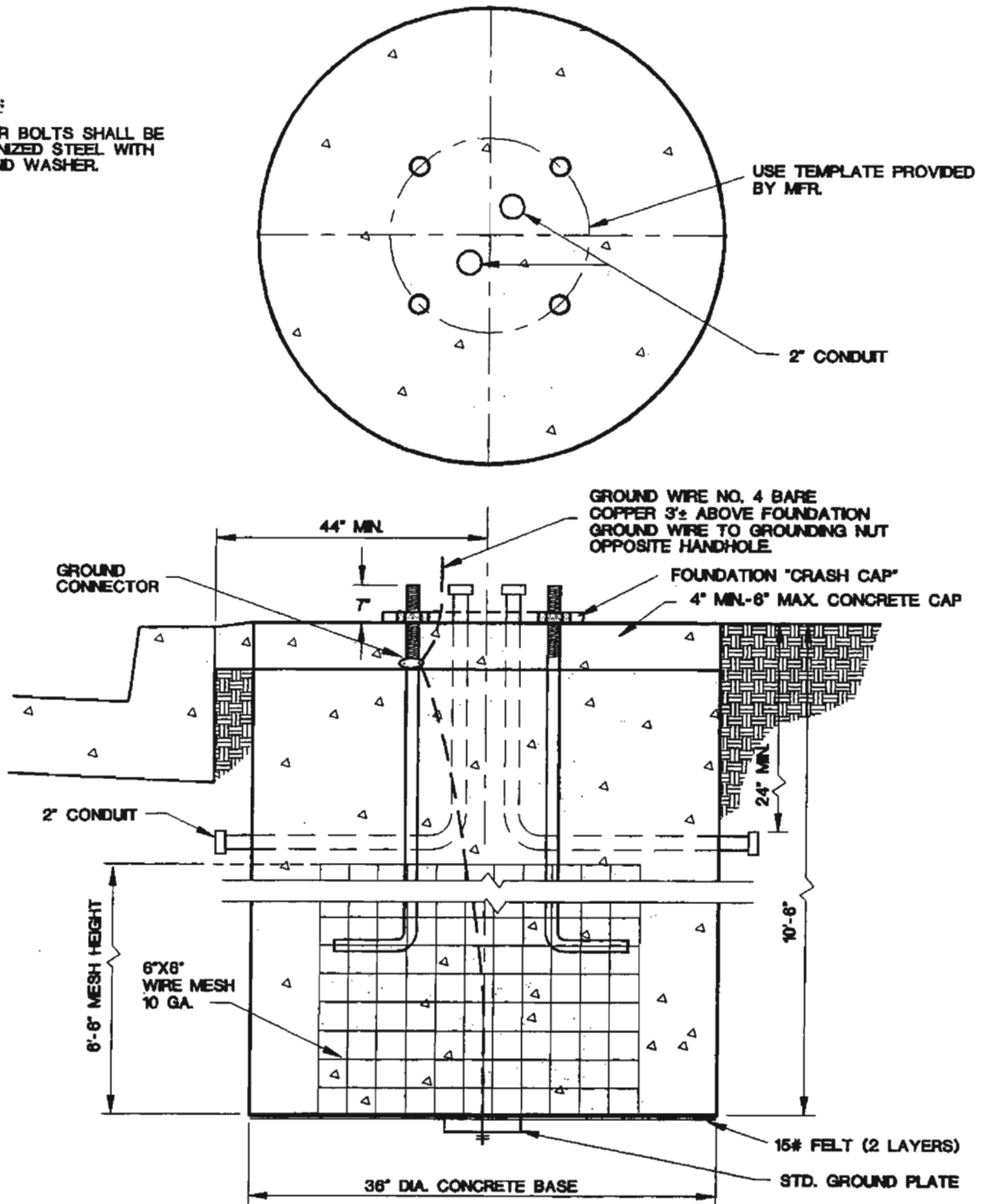
36" DIA. CONCRETE BASE

SPECIFICATION REFERENCE	
623G.03.06	FOUNDATION

UNIFORM STANDARD DRAWINGS CLARK COUNTY AREA		
TYPE 'E' FOUNDATION		
DATE 7-8-93	DWG. NO. 404.205	SHEET 1 OF 1

**NOTES:**

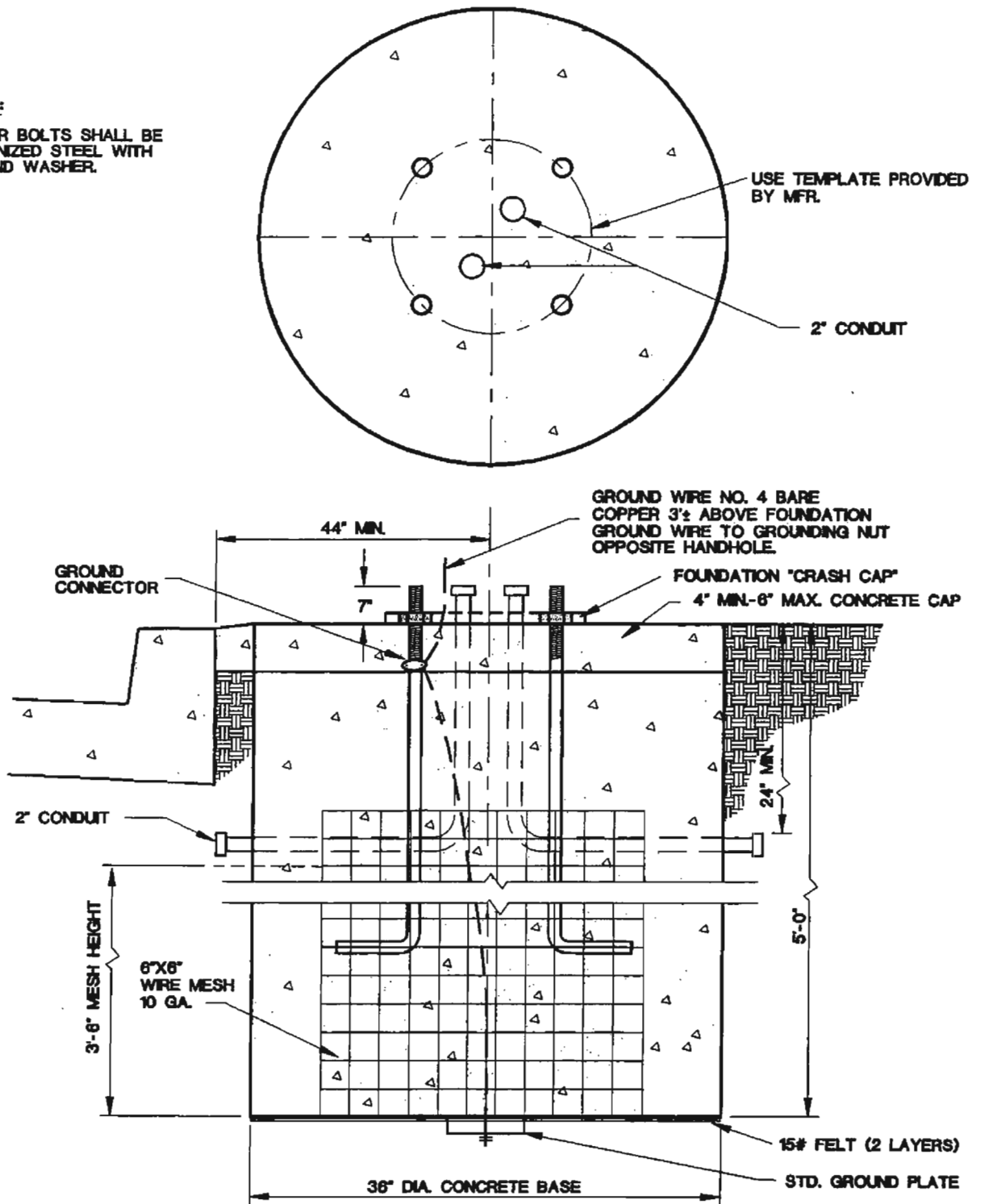
- ANCHOR BOLTS SHALL BE GALVANIZED STEEL WITH NUT AND WASHER.



<b>SPECIFICATION REFERENCE</b>		<b>UNIFORM STANDARD DRAWINGS CLARK COUNTY AREA</b>	
623G.03.08	FOUNDATION	<b>TYPE 'F' FOUNDATION</b>	
		DATE 7-8-93	DWG. NO. 404.206
		SHEET 1 OF 1	

**NOTES:**

- 1 ANCHOR BOLTS SHALL BE GALVANIZED STEEL WITH NUT AND WASHER.

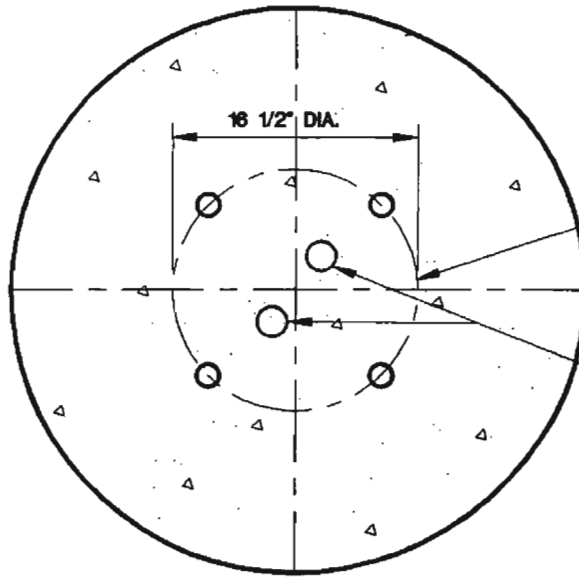


SPECIFICATION REFERENCE	
623G.03.06	FOUNDATION

UNIFORM STANDARD DRAWINGS CLARK COUNTY AREA		
TYPE "G" FOUNDATION		
DATE 7-8-93	DWG. NO. 404.207	SHEET 1 OF 1

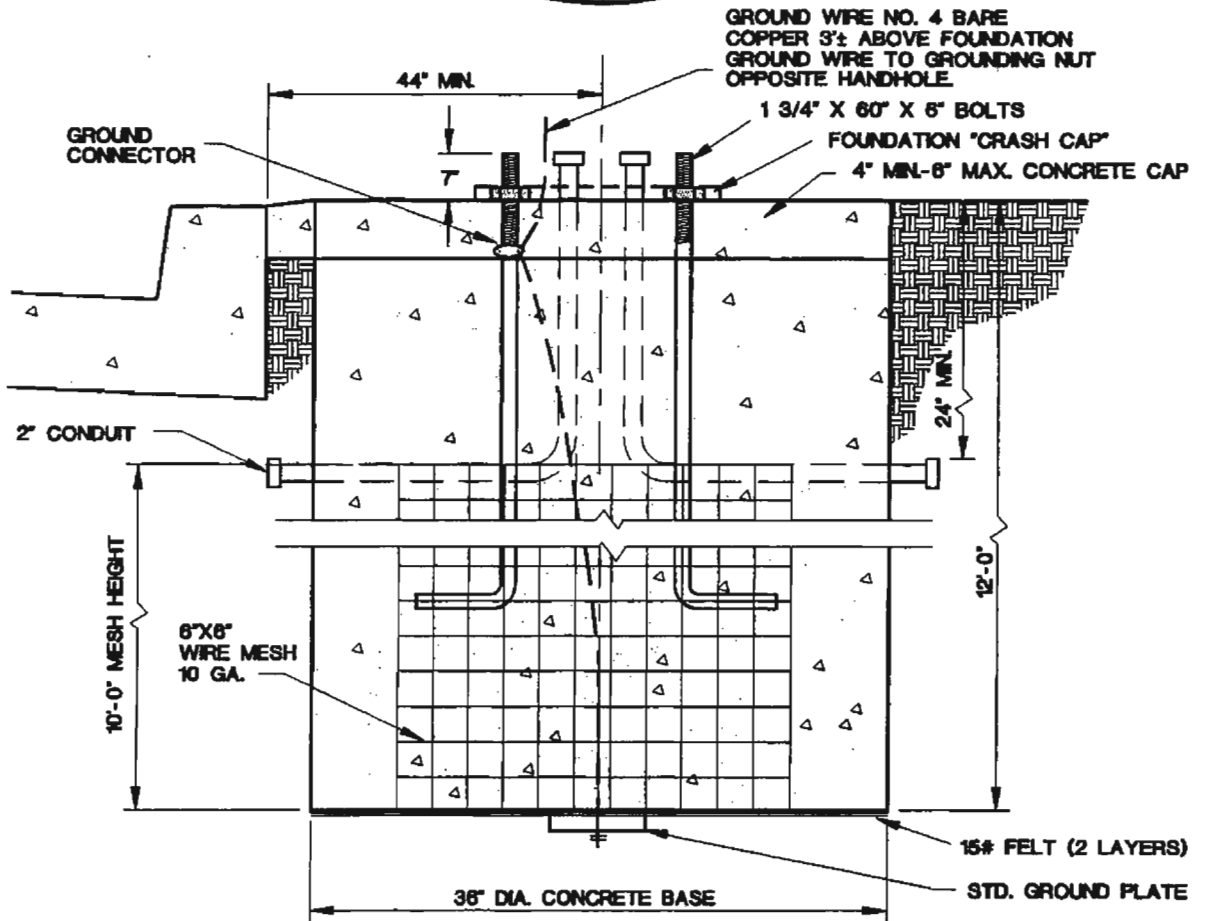
**NOTES:**

- ANCHOR BOLTS SHALL BE GALVANIZED STEEL WITH NUT AND WASHER.



USE TEMPLATE PROVIDED BY MFR.

2" CONDUIT



GROUND WIRE NO. 4 BARE COPPER 3" ABOVE FOUNDATION GROUND WIRE TO GROUNDING NUT OPPOSITE HANDHOLE.

1 3/4" X 60" X 6" BOLTS

FOUNDATION "CRASH CAP"

4" MIN-6" MAX. CONCRETE CAP

GROUND CONNECTOR

44" MIN.

2" CONDUIT

10'-0" MESH HEIGHT

6"X6" WIRE MESH 10 GA.

12'-0"

15# FELT (2 LAYERS)

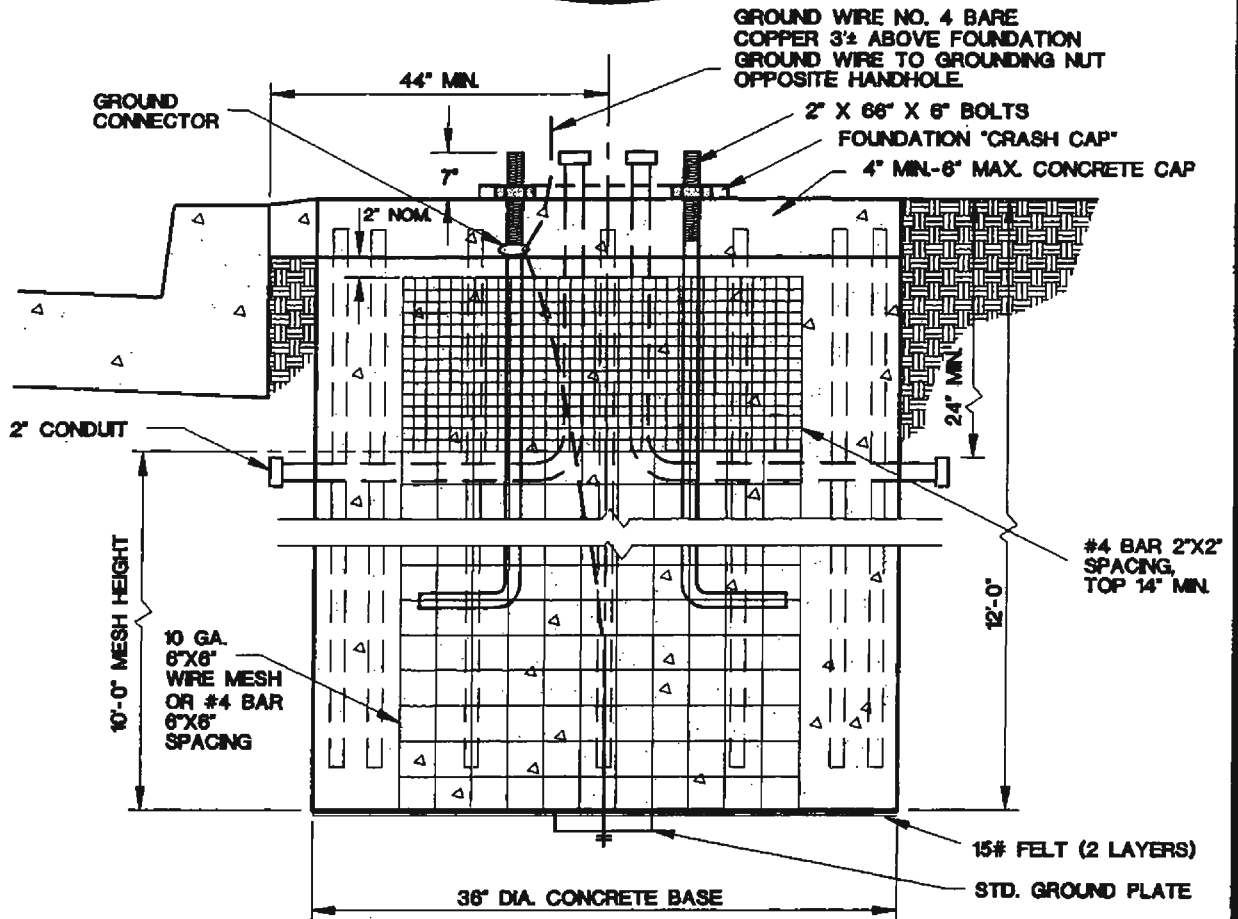
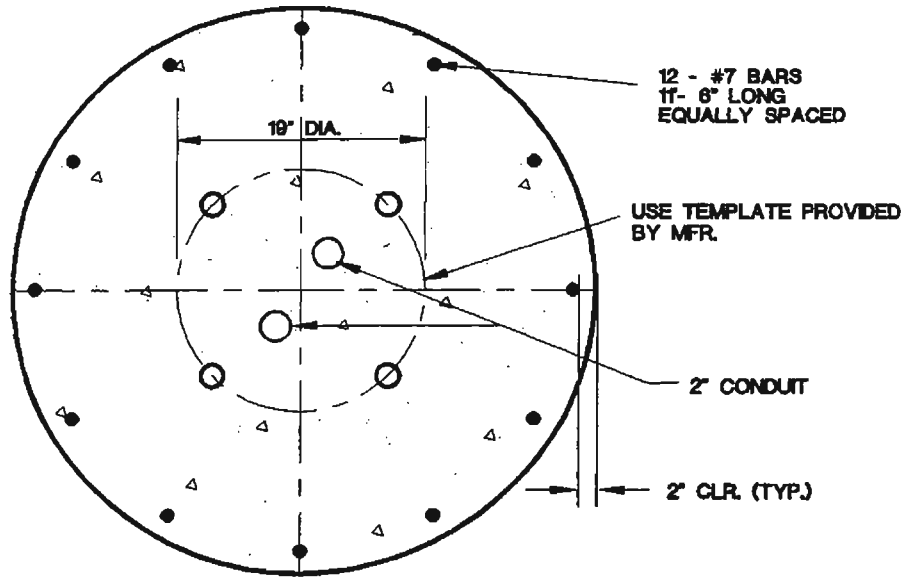
STD. GROUND PLATE

36" DIA. CONCRETE BASE

SPECIFICATION REFERENCE		UNIFORM STANDARD DRAWINGS CLARK COUNTY AREA	
623G.03.06 FOUNDATION		TYPE "H" FOUNDATION	
		DATE 7-8-93	DWG. NO. 404.208
		SHEET 1 OF 1	

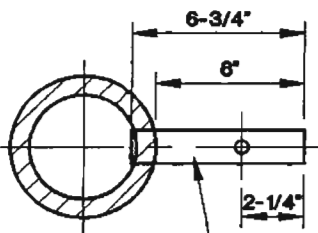
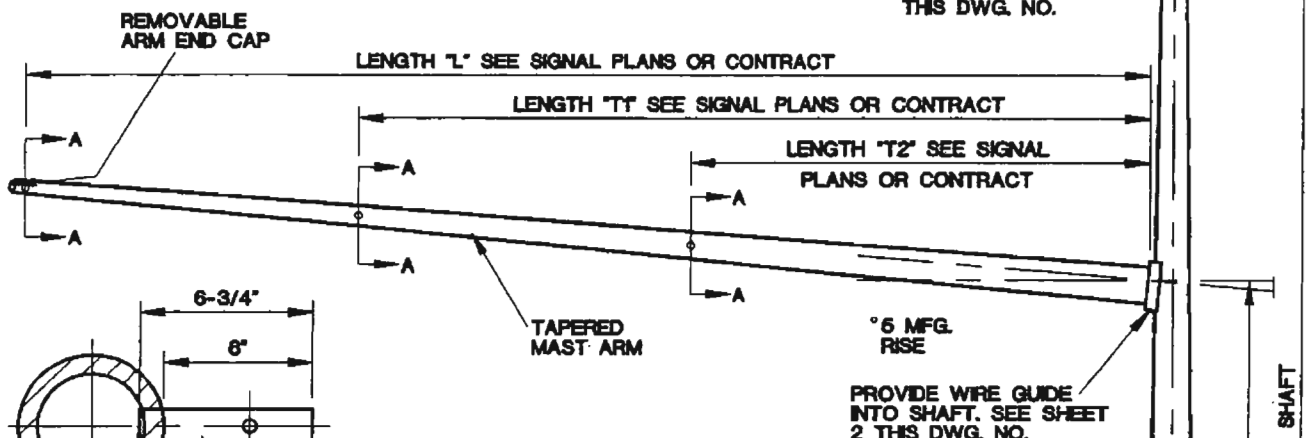
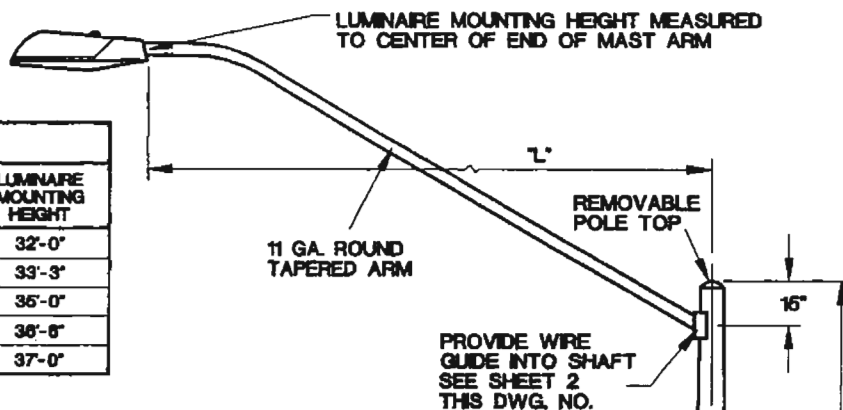
**NOTES:**

1. ANCHOR BOLTS SHALL BE GALVANIZED STEEL WITH NUT AND WASHER.
2. ANCHOR BOLT MINIMUM YIELD STRENGTH  $F_y = 50$  KSL
3. SURROUNDING SOIL MUST HAVE SOIL-BEARING PRESSURE  $S_1$  OF 1500PSF.



<b>SPECIFICATION REFERENCE</b>		<b>UNIFORM STANDARD DRAWINGS CLARK COUNTY AREA</b>	
623G.03.06 FOUNDATION		<b>TYPE 'L' FOUNDATION</b>	
DATE 7-8-93		DWG. NO. 404.209	SHEET 1 OF 1

LUMINAIRE ARM DATA				
ARM SPAN "L" (FT)	FIXED END DIA. (IN)	FREE END DIA. (IN)	GAUGE	LUMINAIRE MOUNTING HEIGHT
6	3.42	2.38	11	32'-0"
8	3.75	2.38	11	33'-3"
10	4.18	2.38	11	35'-0"
12	4.52	2.38	11	36'-6"
15	4.85	2.38	11	37'-0"



2" SCH. 40 PIPE  
TENON WITH 7/16"  
THRU HOLE FOR  
ELEVATOR PLUMBIZER

**DETAIL A-A**

**NOTES:**

1. ALL BIDDERS SHALL PROVIDE SHOP DRAWINGS THAT EXPLICITLY MEET THE DESIGN PRIOR TO BIDDING.
2. ALL POLES TO BE GALVANIZED BY MANUFACTURER OR PRIME PAINTED BY MANUFACTURER AND FINISH PAINTED BY CONTRACTOR PER SPECIFICATIONS.
3. HANDHOLE COVERS SHALL BE MOUNTED WITH TAMPER-RESISTENT SCREWS.
4. PEDESTRIAN PUSH BUTTON SHALL NOT BE LOCATED MORE THAN 24" FROM THE BACK OF WALK. IF DISTANCE FROM BACK OF WALK TO PUSH BUTTON IS 20" TO 24", THE BUTTON SHALL BE LOCATED A MAXIMUM OF 44" FROM THE SURFACE OF THE WALK; OTHERWISE THE HEIGHT SHALL BE 48".

POLES DESIGNED PER SPECIFICATION OF A.A.S.H.T.O. 80 MPH WINDS.  
(SEE DRAWING NO. 404.408 SHEET 5 FOR LOADING INFORMATION)

4" X 6-1/2" (INSIDE DIM.)  
HANDHOLE  
90° TO RIGHT OF ARM

BASE COVER

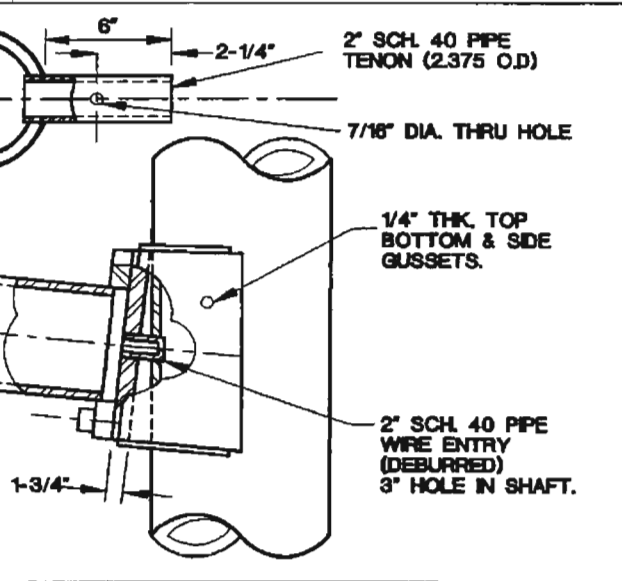
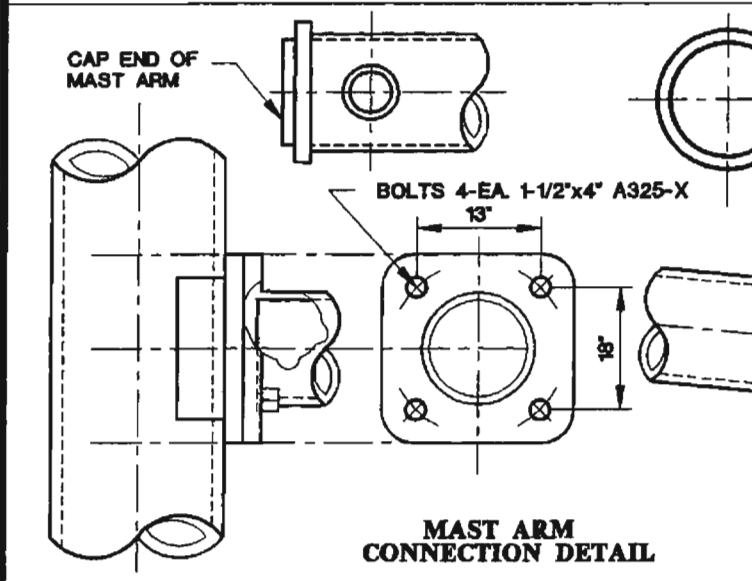
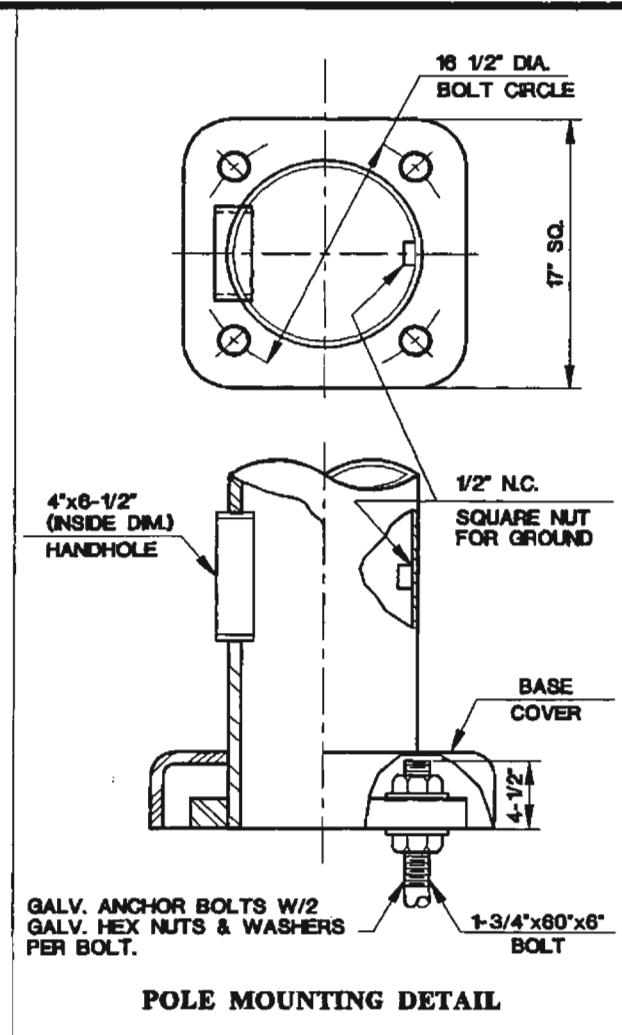
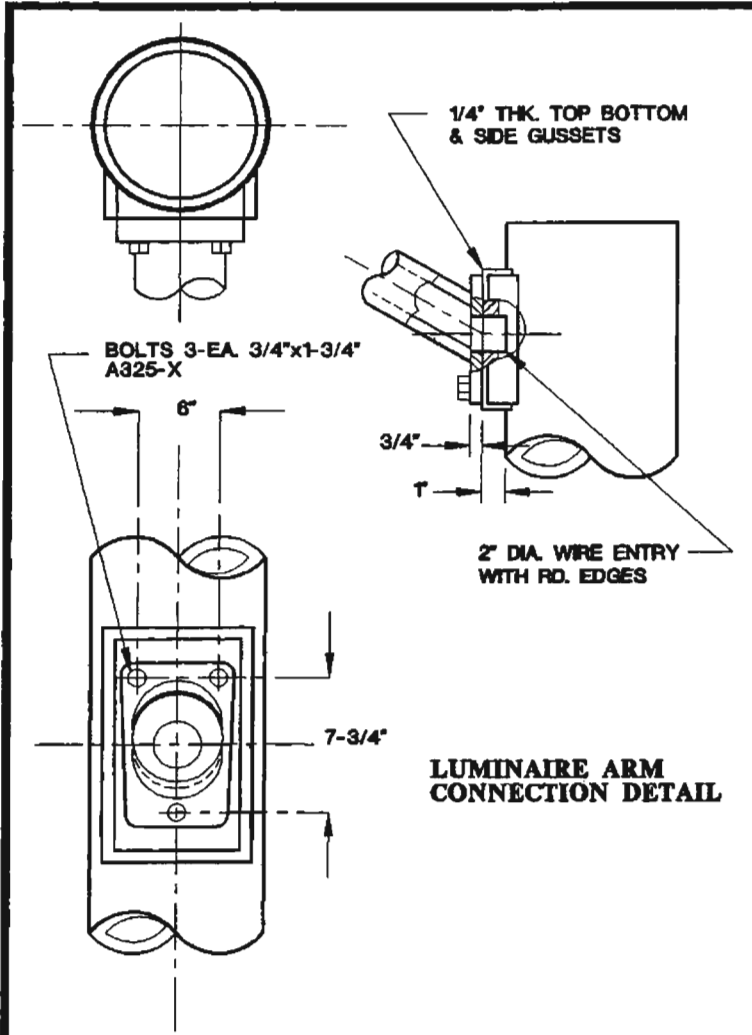
FOR "H" TYPE FOUNDATION SEE  
DRAWING NO. 404.208

SPECIFICATION REFERENCE	

**UNIFORM STANDARD DRAWINGS  
CLARK COUNTY AREA**

**TYPE XX-30'-0"  
SIGNAL & LUMINAIRE POLE**

DATE 7-8-93	DWG. NO. 404.406	SHEET 1 OF 6
-------------	------------------	--------------



SPECIFICATION REFERENCE	

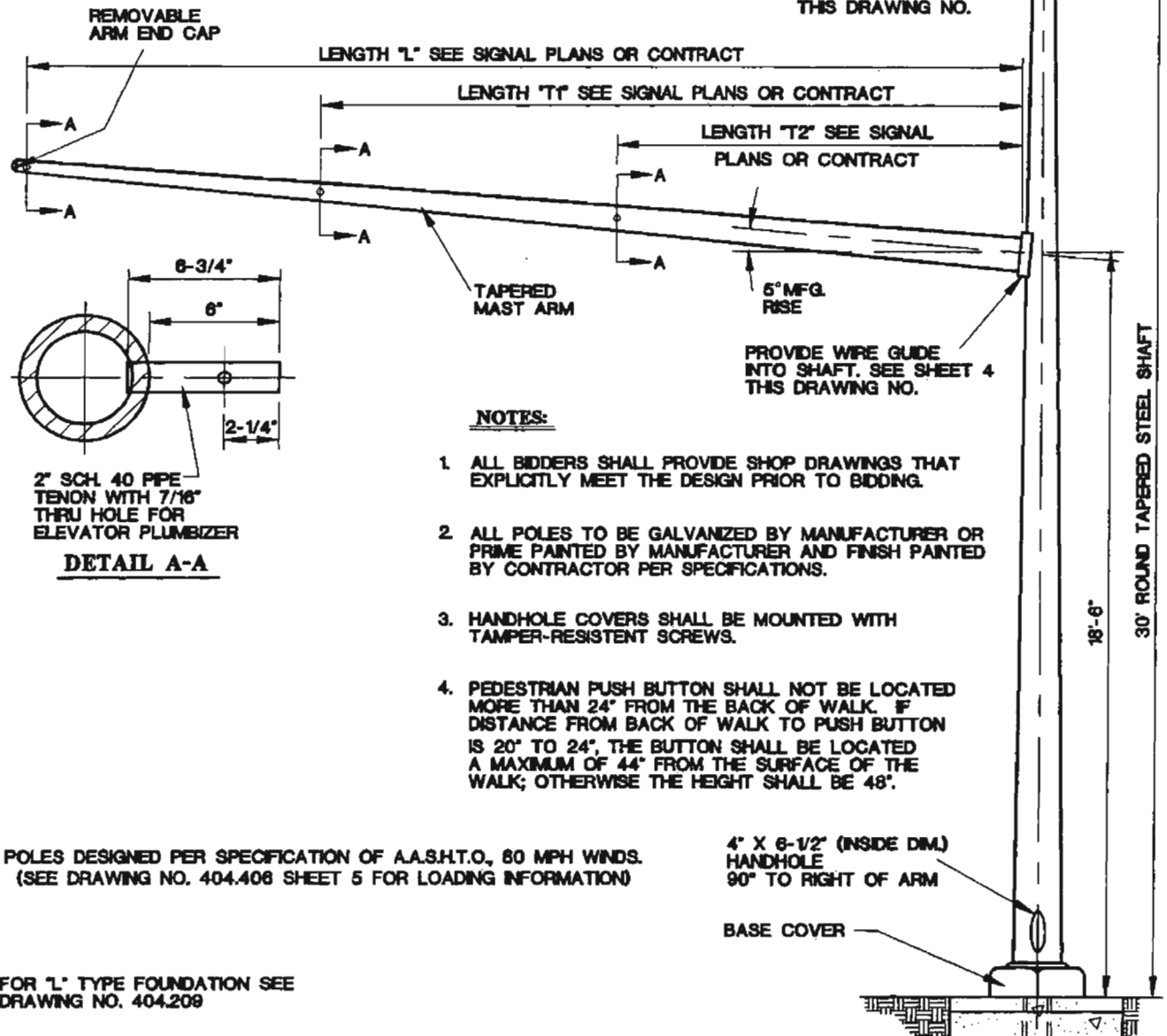
**UNIFORM STANDARD DRAWINGS  
CLARK COUNTY AREA**

**TYPE XX - 30'-0"  
SIGNAL & LUMINAIRE POLE  
DETAILS**

DATE 7-8-93 DWG. NO. 404.406 SHEET 2 OF 6

LUMINAIRE ARM DATA				
ARM SPAN "L" (FT)	FIXED END DIA. (IN)	FREE END DIA. (IN)	GAUGE	LUMINAIRE MOUNTING HEIGHT
6	3.42	2.38	11	32'-0"
8	3.75	2.38	11	33'-3"
10	4.10	2.38	11	35'-0"
12	4.52	2.38	11	36'-6"
15	4.95	2.38	11	37'-0"

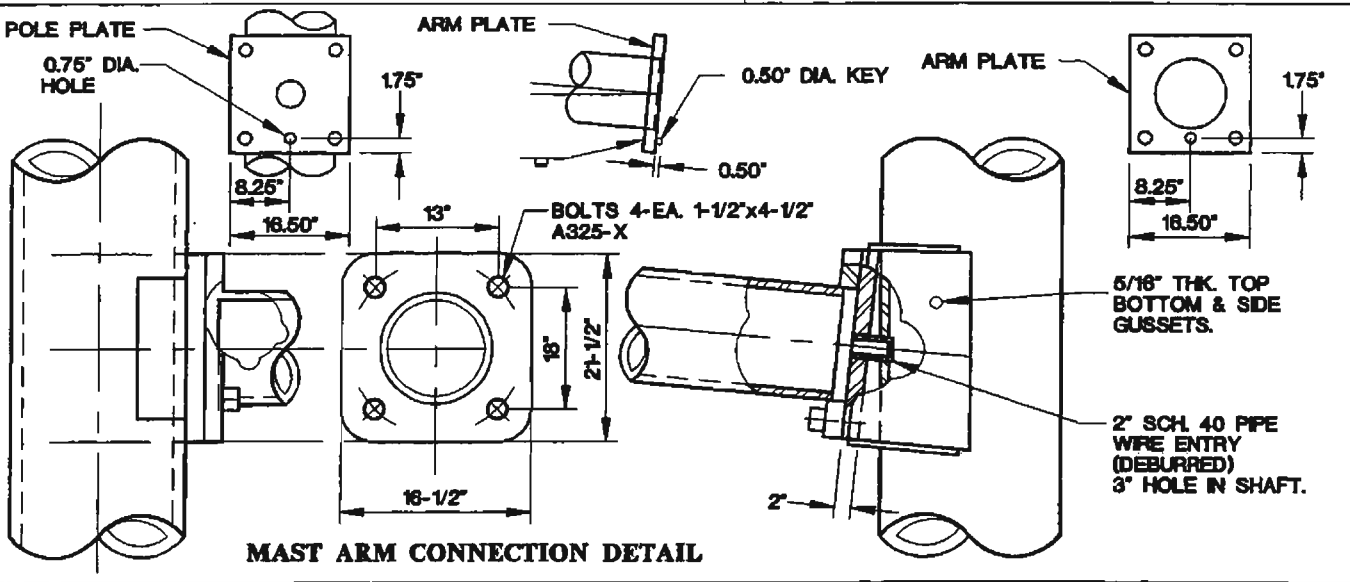
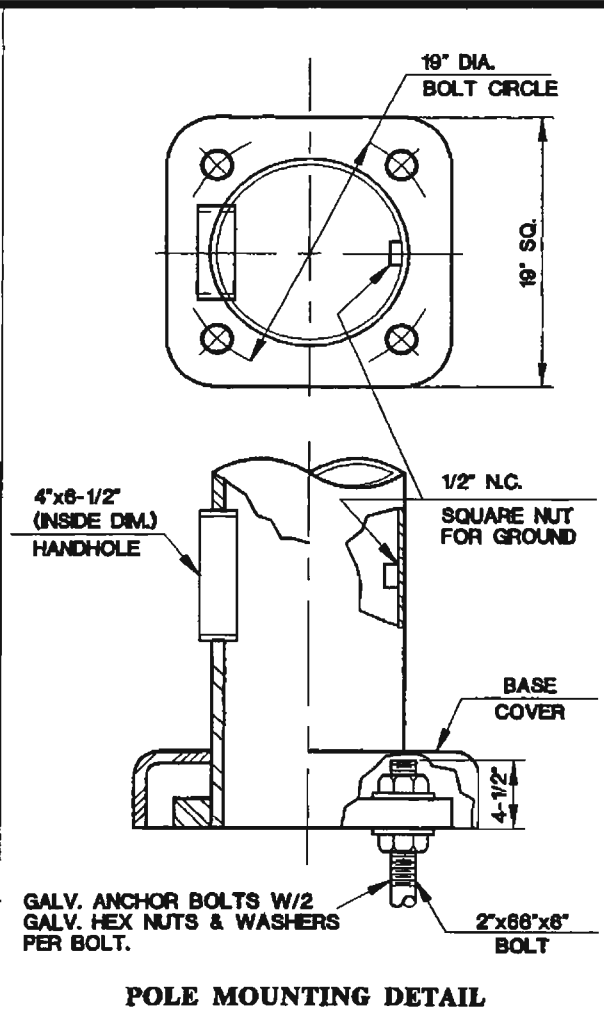
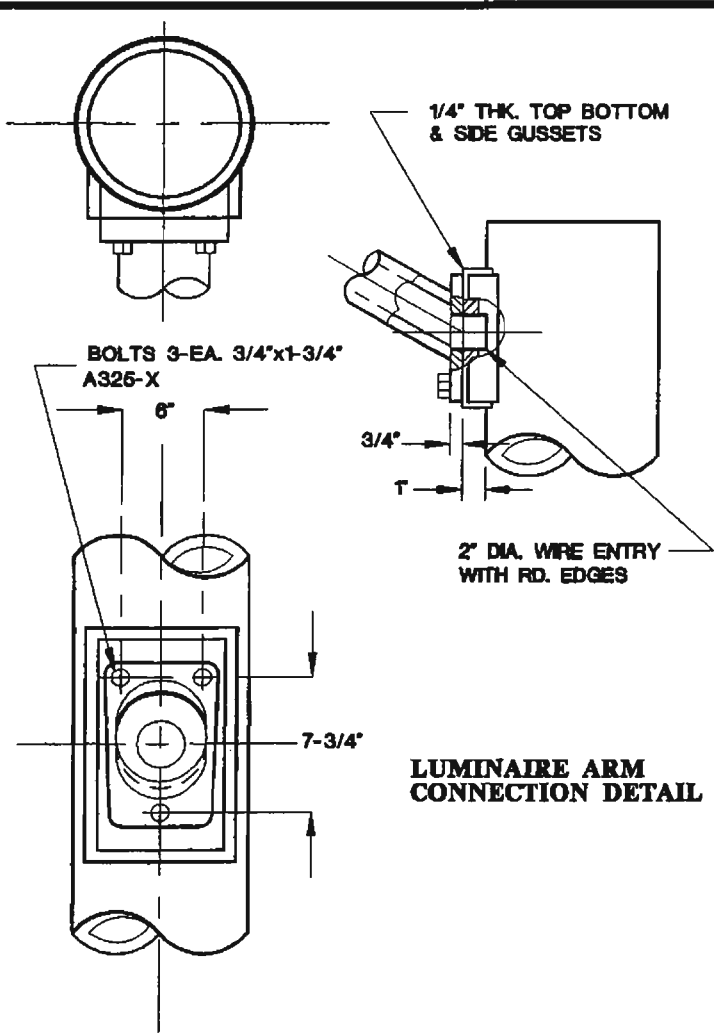
LUMINAIRE MOUNTING HEIGHT MEASURED TO CENTER OF END OF MAST ARM



**SPECIFICATION REFERENCE**


**UNIFORM STANDARD DRAWINGS  
CLARK COUNTY AREA**

**TYPE XX - A - 30'-0"  
SIGNAL & LUMINAIRE POLE**

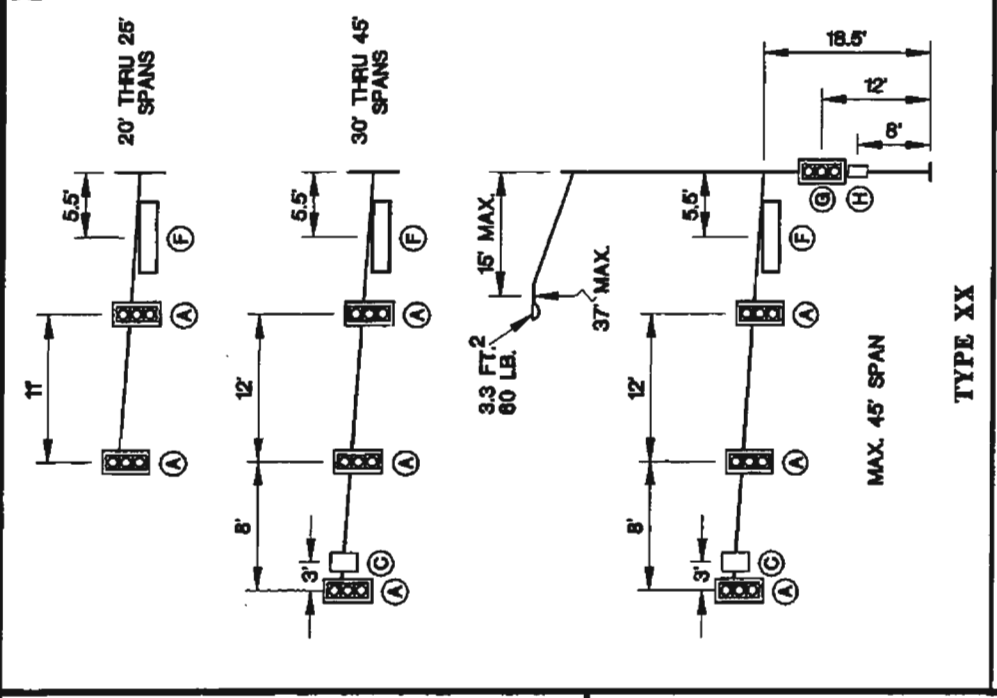
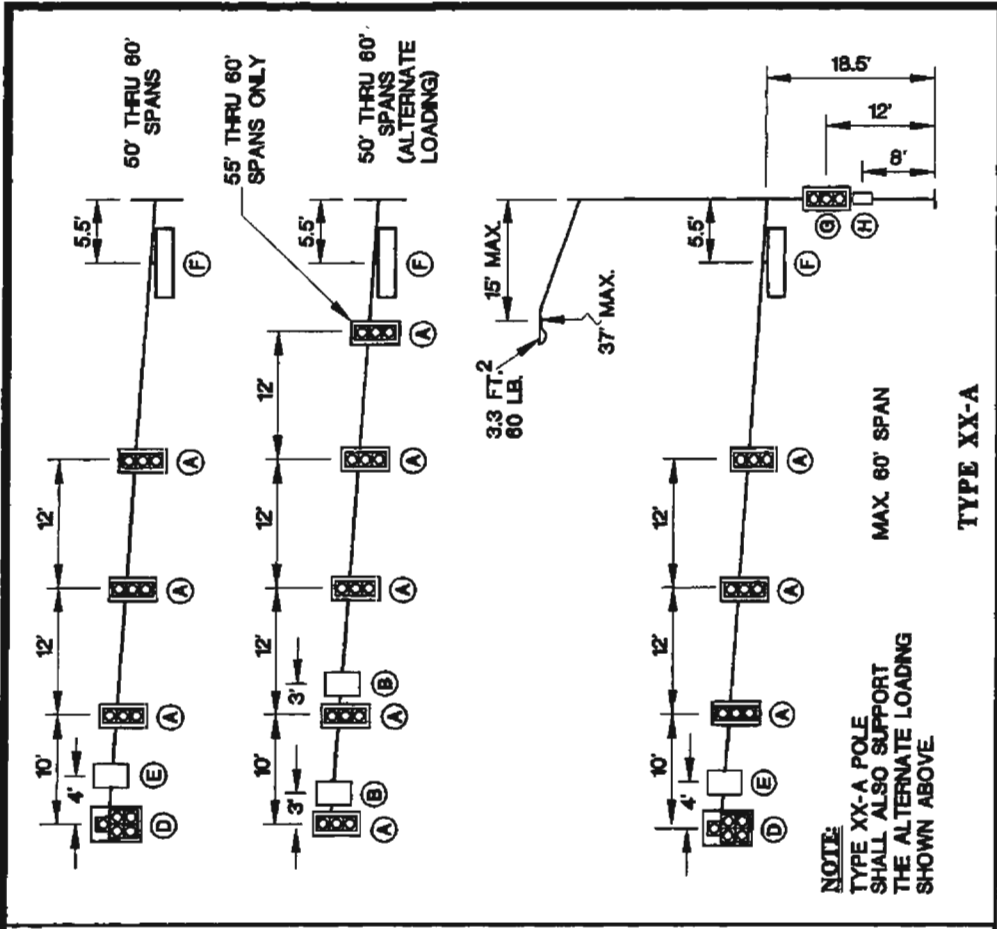


SPECIFICATION REFERENCE	

**UNIFORM STANDARD DRAWINGS  
CLARK COUNTY AREA**

**TYPE XX - A - 30'-0"  
(50' THRU 60' MAST ARMS)  
SIGNAL & LUMINAIRE POLE DETAILS**

DATE 7-8-93 DWG. NO. 404.406 SHEET 4 OF 6



**DESIGN CRITERIA:**

1985 AASHTO STANDARD SPECIFICATIONS FOR STRUCTURAL SUPPORTS FOR HIGHWAY SIGNS, LUMINAIRES AND TRAFFIC SIGNALS.  
 MAXIMUM DESIGN MINIMUM YIELD STRENGTH FOR TUBULAR MEMBERS SHALL BE LIMITED TO 48,000 PSI FOR COLD WORKED MATERIALS AND 60,000 PSI FOR NON-COLD WORKED MATERIALS.  
 WIND VELOCITY:  
 80 MPH ISOTACH

DEVICE	DESCRIPTION	PROJ. AREA (FT <sup>2</sup> )	WEIGHT (LBS)
(A) SIGNAL	12" - 3 SEC. W/ BACKPLATES (M-2)	9.80	40
(B) SIGN	R3-5 24" X 30"	5.00	15
(C) SIGN	R3-4 24" X 24"	4.00	10
(D) SIGNAL	12" - 5 SEC. W/ BACKPLATES	13.88	80
(E) SIGN	R10-5(8) 36" X 45"	11.25	30
(F) SIGN	STREET NAME-FREE SWINGING-168" X 8"	13.44	100
(G) SIGNAL	DUAL-12" - 3 SEC. W/ BACKPLATES	17.34	80
(H) SIGNAL	DUAL-PEDESTRIAN	8.00	80

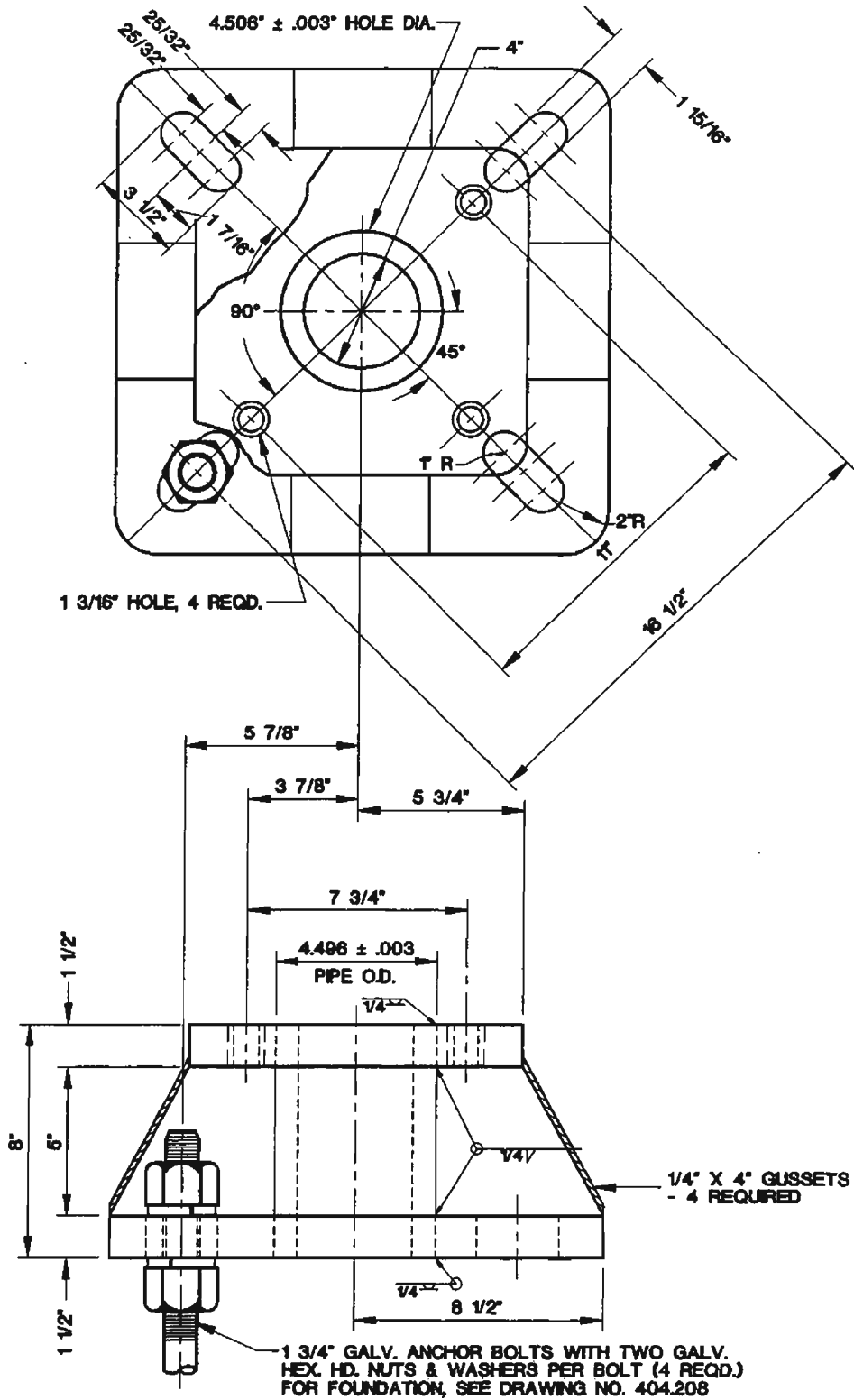
SPECIFICATION REFERENCE	

**UNIFORM STANDARD DRAWINGS  
CLARK COUNTY AREA**

**LOADING INFORMATION**

DATE 7-8-93    DWG. NO. 404.406    SHEET 5 OF 6

LOADING INFORMATION

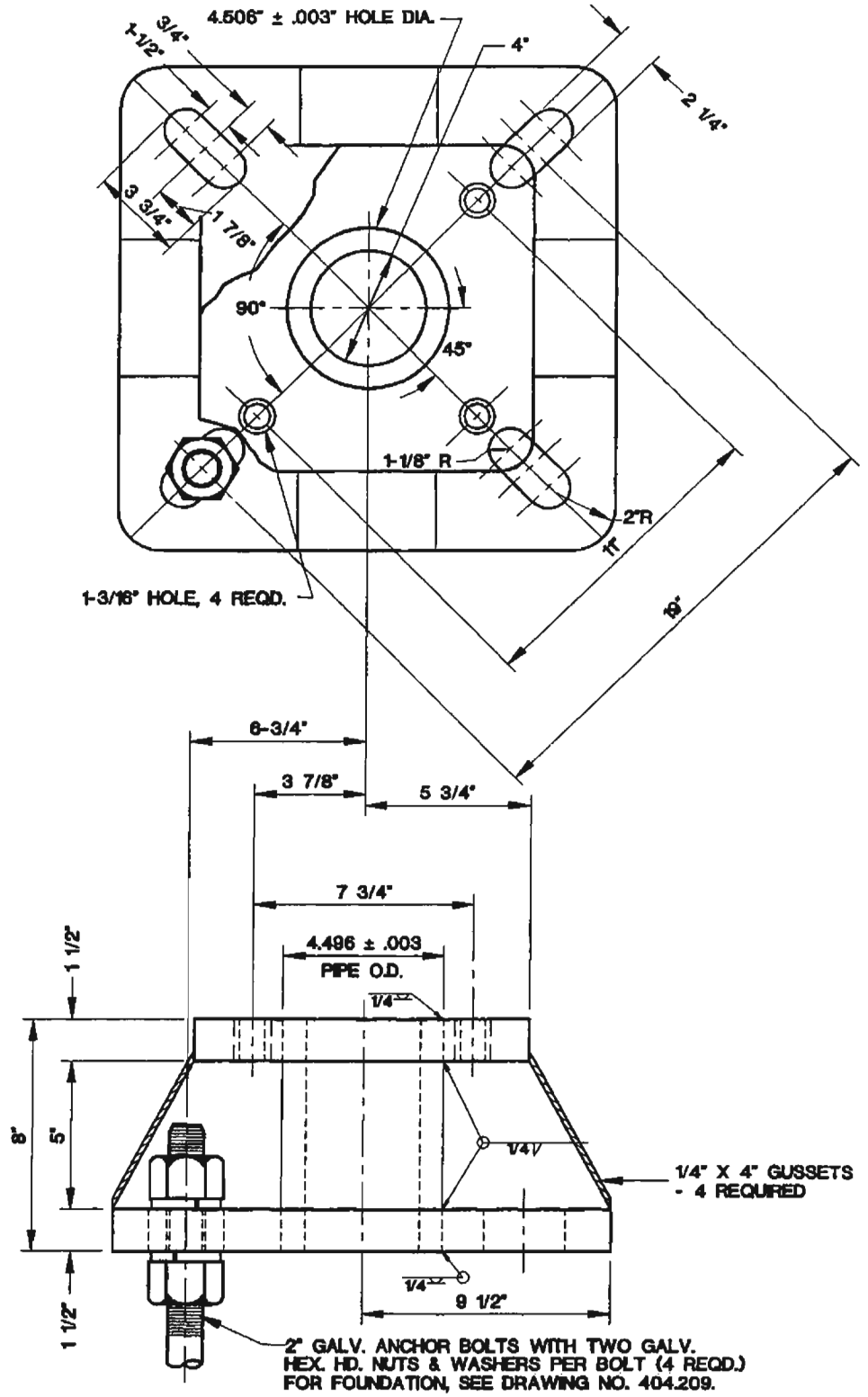


SPECIFICATION REFERENCE	

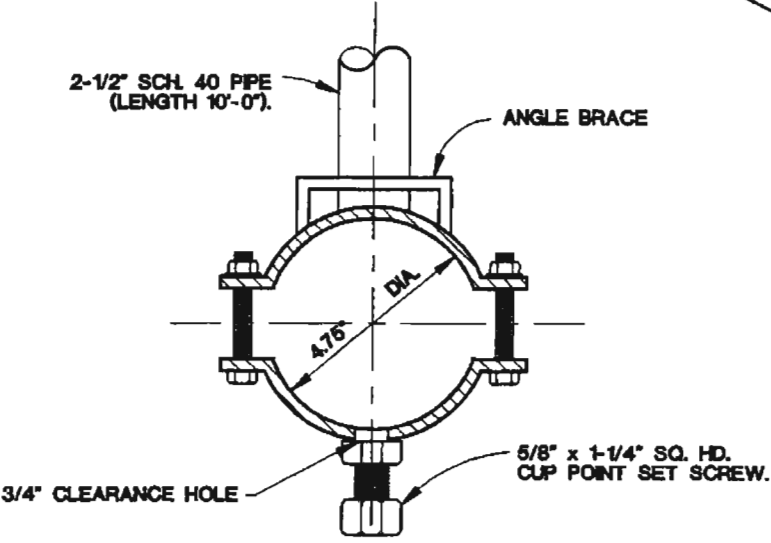
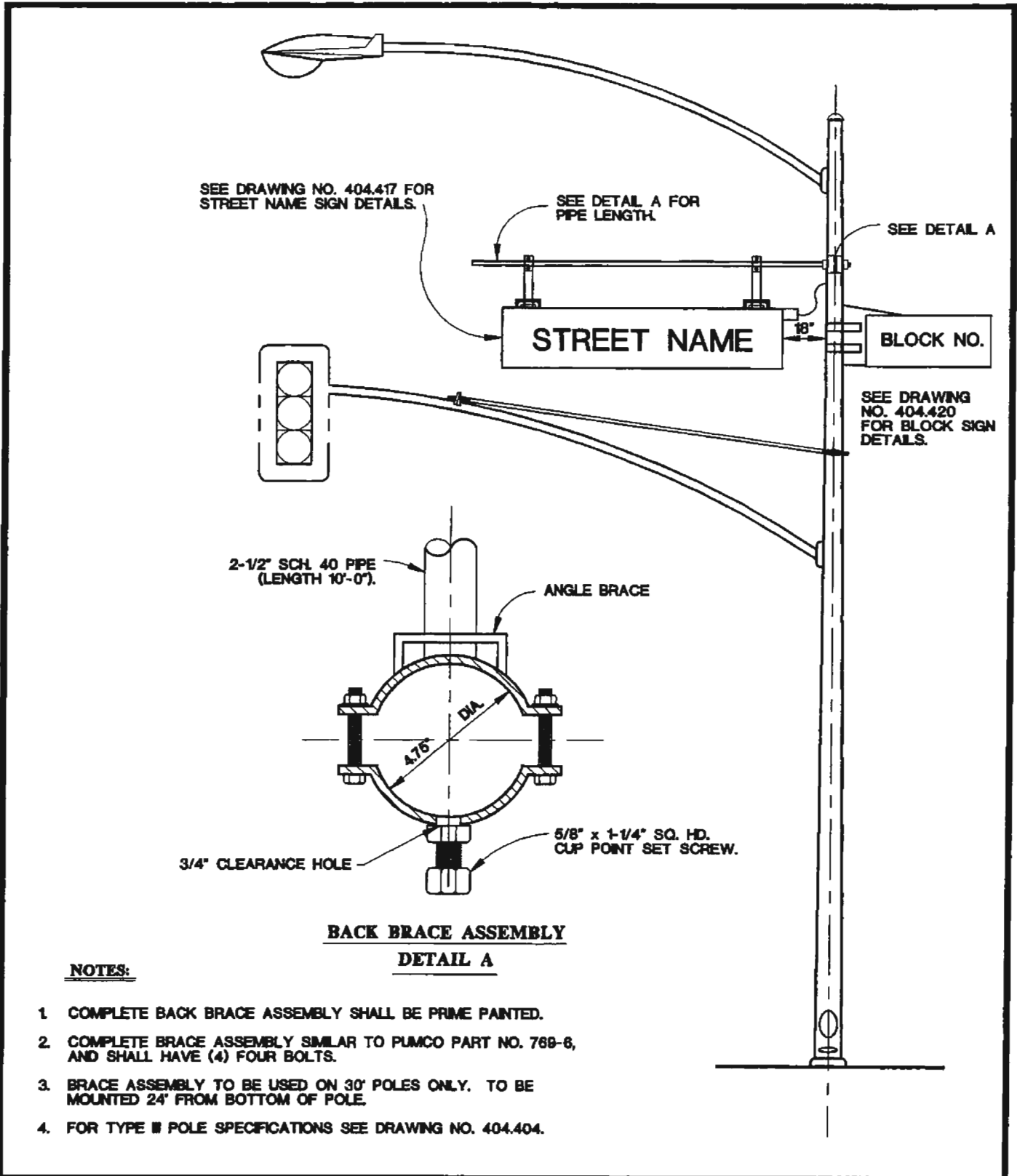
**UNIFORM STANDARD DRAWINGS  
CLARK COUNTY AREA**

**BASE ADAPTOR PLATE  
FOR TYPE "H" FOUNDATION**

DATE 2-11-93	DWG. NO. 404.409	SHEET 1 OF 2
--------------	------------------	--------------



<b>SPECIFICATION REFERENCE</b>	<b>UNIFORM STANDARD DRAWINGS CLARK COUNTY AREA</b>	
	<b>BASE ADAPTOR PLATE FOR TYPE "L" FOUNDATION</b>	
	DATE 2-11-93	DWG. NO. 404.409
	SHEET 2 OF 2	

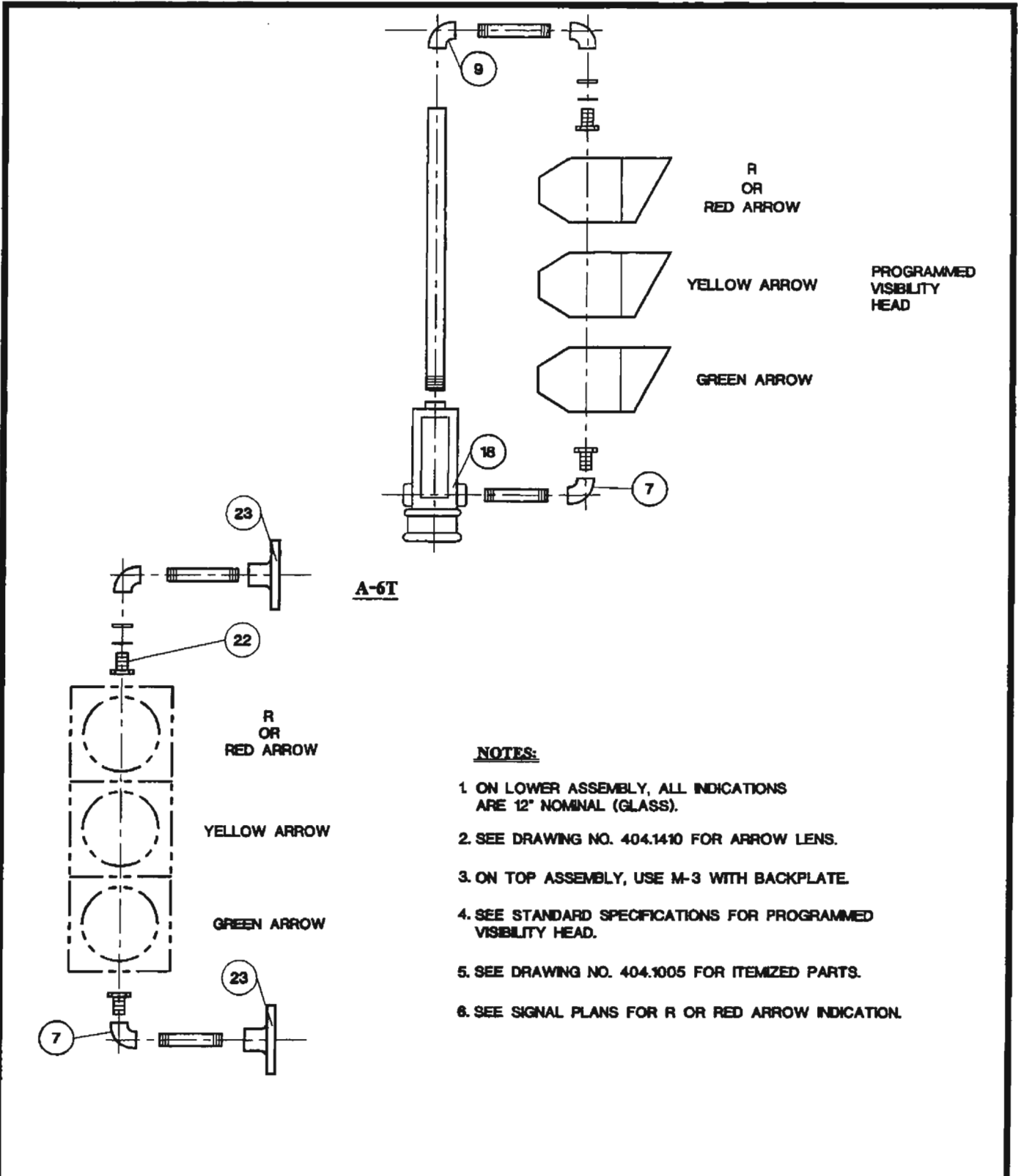


**BACK BRACE ASSEMBLY  
DETAIL A**

**NOTES:**

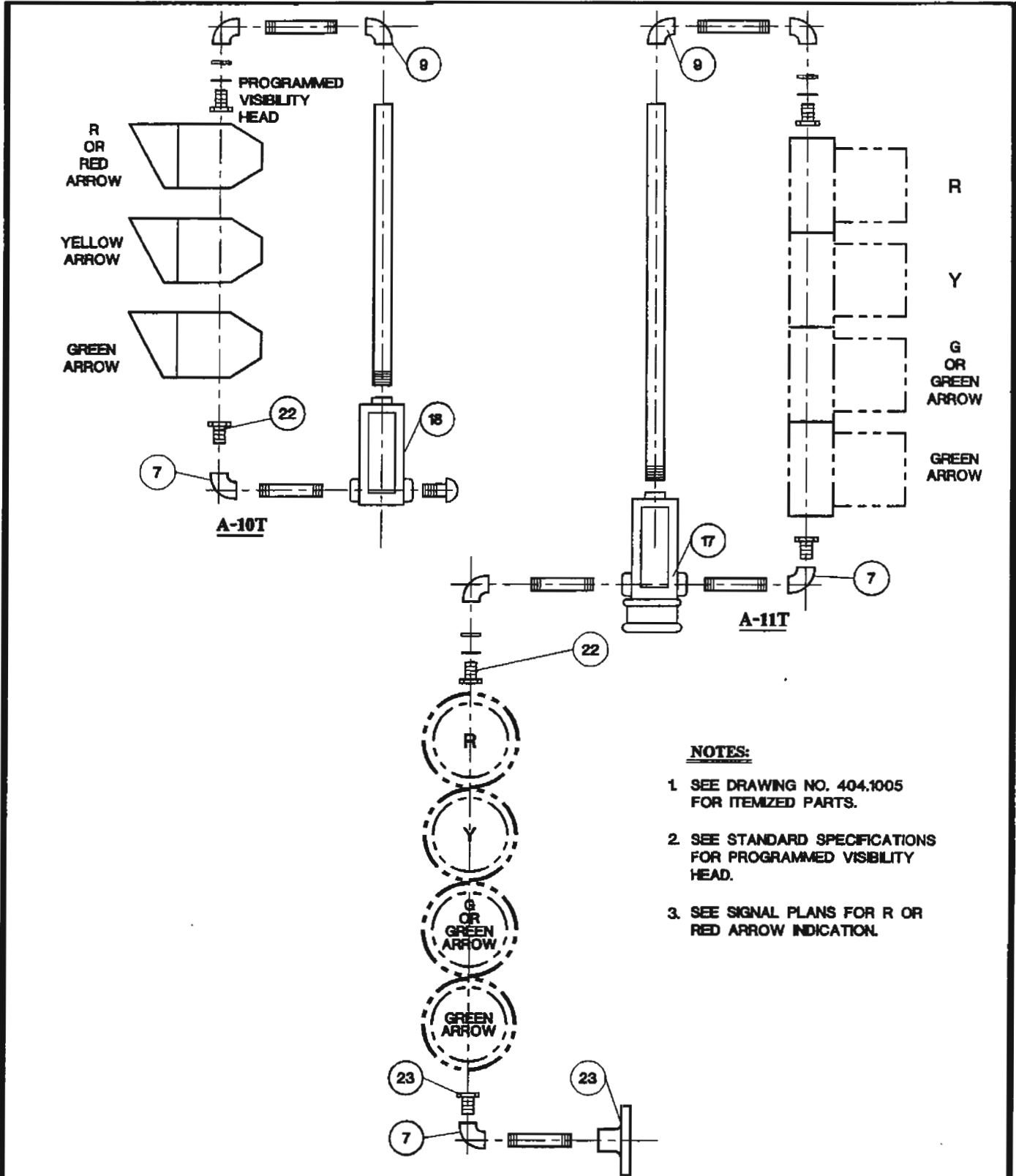
1. COMPLETE BACK BRACE ASSEMBLY SHALL BE PRIME PAINTED.
2. COMPLETE BRACE ASSEMBLY SIMILAR TO PUMCO PART NO. 768-8, AND SHALL HAVE (4) FOUR BOLTS.
3. BRACE ASSEMBLY TO BE USED ON 30' POLES ONLY. TO BE MOUNTED 24' FROM BOTTOM OF POLE.
4. FOR TYPE III POLE SPECIFICATIONS SEE DRAWING NO. 404.404.

<b>SPECIFICATION REFERENCE</b>	<b>UNIFORM STANDARD DRAWINGS CLARK COUNTY AREA</b>		
	<b>TYPE III POLE WITH ILLUMINATED STREET NAME SIGN</b>		
	DATE 3-11-93	DWG. NO. 404.415	SHEET 1 OF 1



SPECIFICATION REFERENCE	UNIFORM STANDARD DRAWINGS CLARK COUNTY AREA		
	<p style="font-size: 1.2em; margin: 0;">SIGNAL ASSEMBLIES</p> <p style="margin: 0;">A-6T</p>		
	DATE 2-11-93	DWG. NO. 404.1013	SHEET 1 OF 1





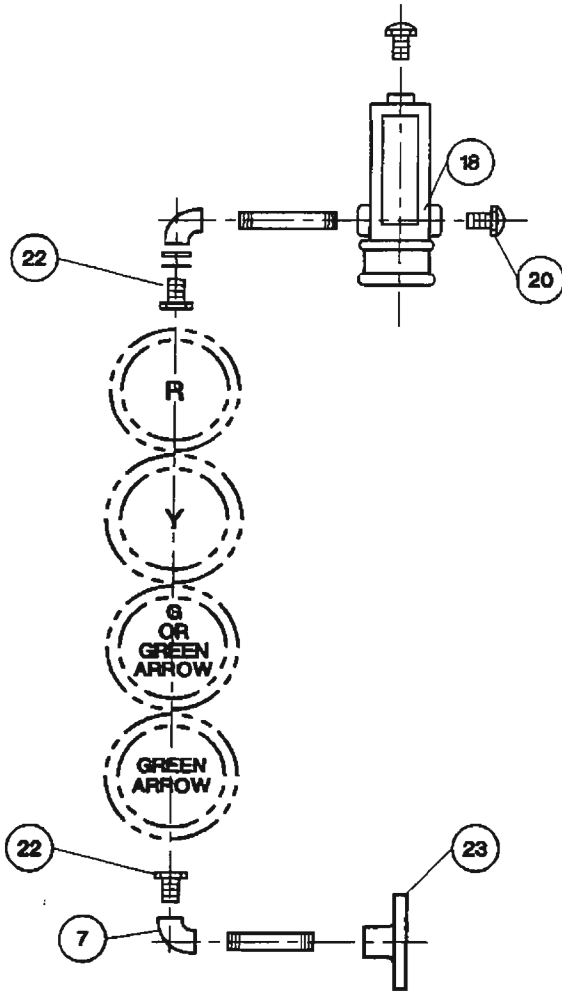
**NOTES:**

- 1. SEE DRAWING NO. 404.1005 FOR ITEMIZED PARTS.
- 2. SEE STANDARD SPECIFICATIONS FOR PROGRAMMED VISIBILITY HEAD.
- 3. SEE SIGNAL PLANS FOR R OR RED ARROW INDICATION.

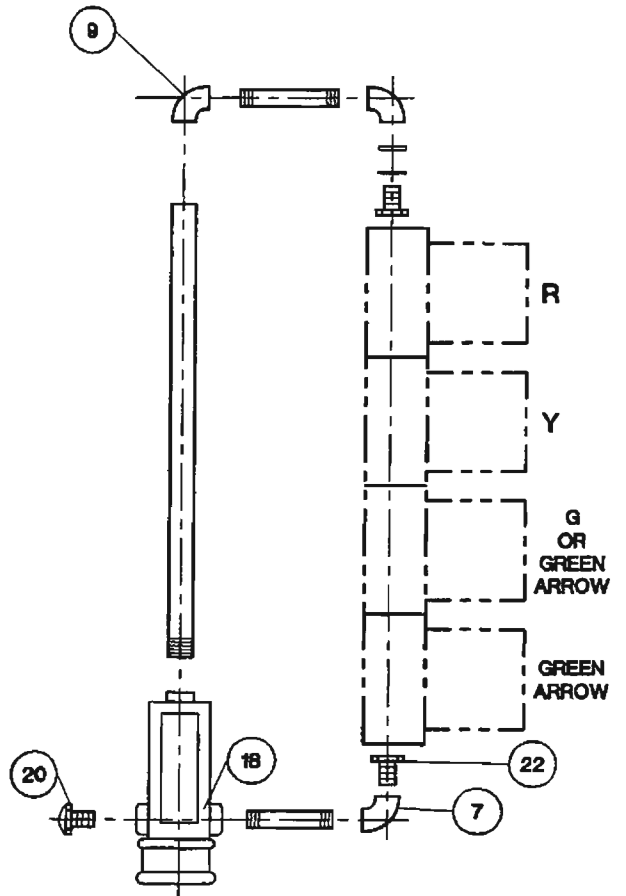
SPECIFICATION REFERENCE	

**UNIFORM STANDARD DRAWINGS  
CLARK COUNTY AREA**

**SIGNAL ASSEMBLIES  
A-10T, A-11T**



**A-12T**



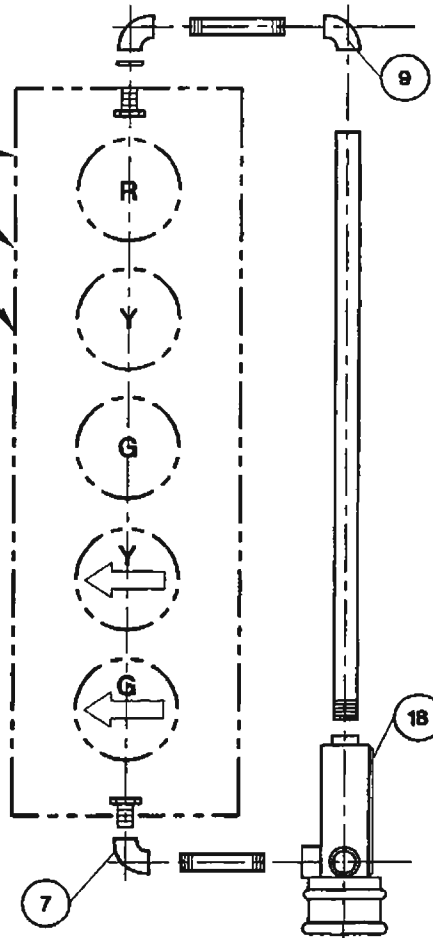
**A-13T**

**NOTES:**

1. FOR ITEMIZED PARTS SEE DRAWING NO. 404.1005.
2. FOR ARROW LENS SEE DRAWING NO. 404.1410.
3. PROVIDE BACKPLATE ON A-13T ONLY.
4. ALL SIGNALS ARE 12" NOMINAL (GLASS).

SPECIFICATION REFERENCE		UNIFORM STANDARD DRAWINGS CLARK COUNTY AREA	
		<b>SIGNAL ASSEMBLIES</b> <b>A-12T, A-13T</b>	
		DATE 2-11-93	DWG. NO. 404.1017
		SHEET 1 OF 1	

OPTIONAL  
CUTOFF  
LOUVERS  
SEE NOTE 5



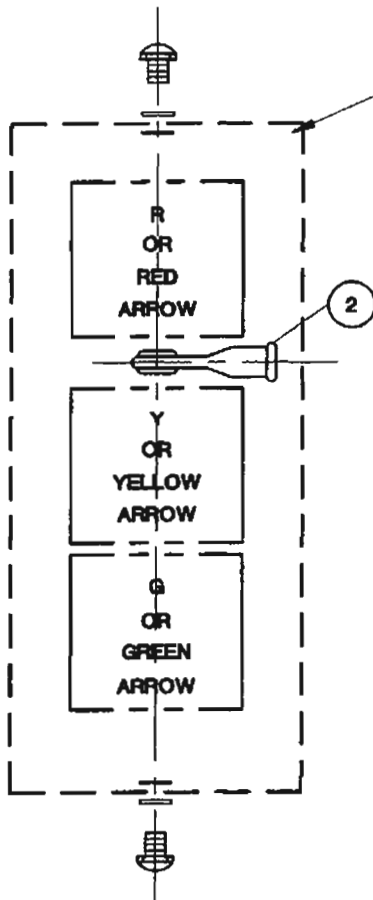
**A-16T**

**NOTES:**

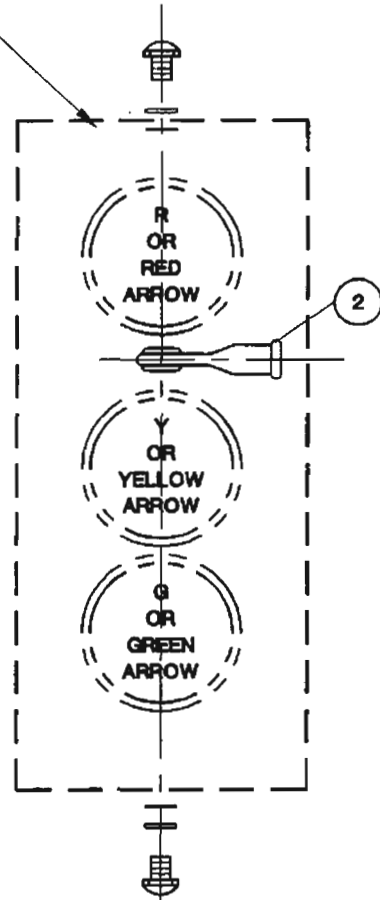
1. ALL SIGNALS ARE 12" NOMINAL (GLASS).
2. FOR ITEMIZED PARTS SEE DRAWING NO. 404.1005.
3. FOR ARROW LENS SEE DRAWING NO. 404.1410.
4. SEE PLANS FOR BACKPLATE REQUIREMENTS.
5. OPTIONAL 3° CUTOFF LOUVERS ON RED, YELLOW AND GREEN BALL INDICATIONS MAY BE PROVIDED AS DIRECTED BY THE TRAFFIC ENGINEER.

SPECIFICATION REFERENCE		UNIFORM STANDARD DRAWINGS CLARK COUNTY AREA	
		<b>SIGNAL ASSEMBLIES A-16T</b>	
		DATE 5-12-94	DWG. NO. 404.1019
		SHEET 1 OF 1	

PROVIDE LOUVERED BACKPLATE  
SIMILAR TO DRAWING 404.900



**PROGRAMMED VISIBILITY HEADS**  
**M-3**

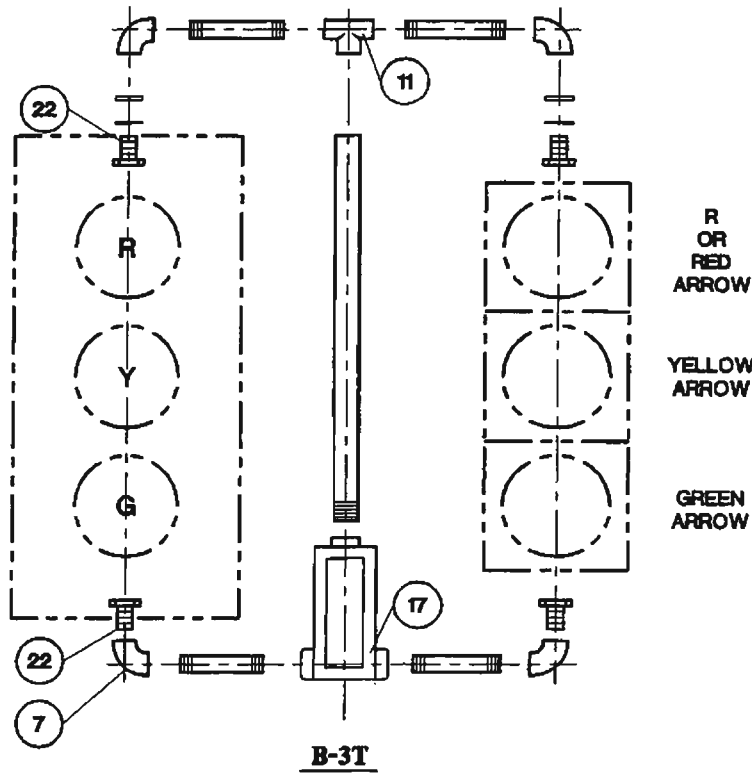
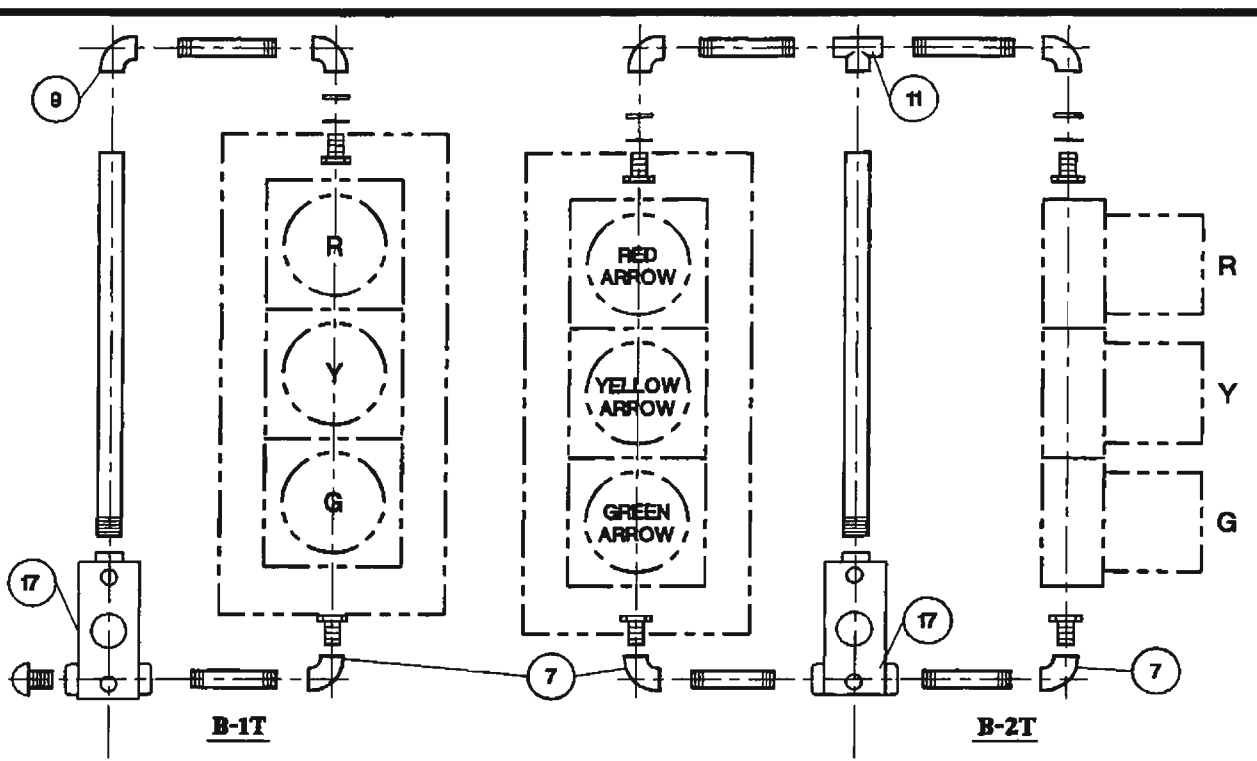


**STANDARD 12" SIGNAL HEADS**  
**M-2**

**NOTES:**

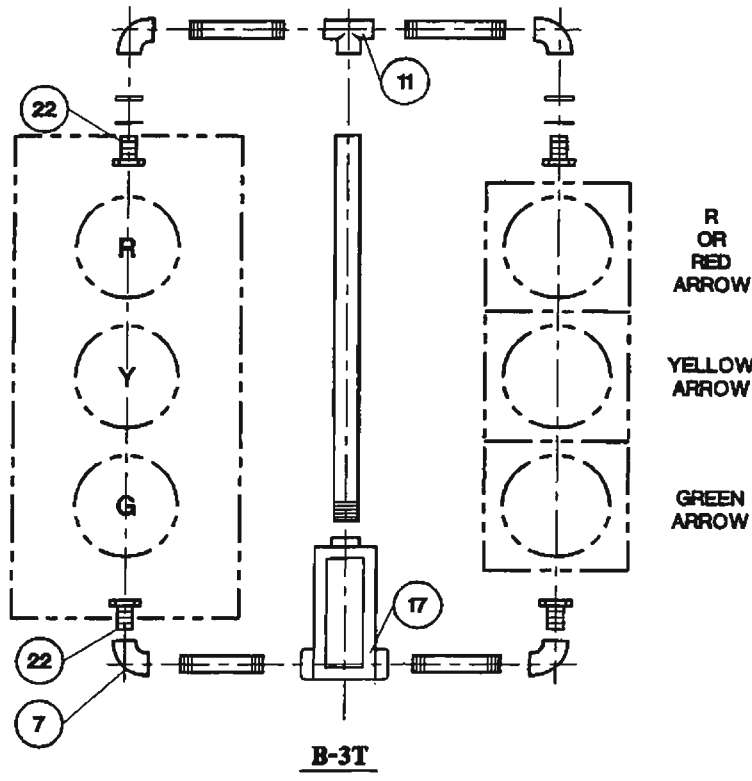
1. SEE STANDARD SPECIFICATIONS FOR PROGRAMMED VISIBILITY HEAD.
2. ALL M-2 INDICATIONS ARE 12" NOMINAL (GLASS).
3. SEE DRAWING NO. 404.1005 FOR ITEMIZED PARTS.
4. SEE SIGNAL PLANS FOR BALL OR ARROW INDICATIONS.

<b>SPECIFICATION REFERENCE</b>		<b>UNIFORM STANDARD DRAWINGS CLARK COUNTY AREA</b>																	
<table border="1" style="width: 100%; height: 100%;"> <tr><td> </td><td> </td></tr> <tr><td> </td><td> </td></tr> <tr><td> </td><td> </td></tr> <tr><td> </td><td> </td></tr> <tr><td> </td><td> </td></tr> <tr><td> </td><td> </td></tr> <tr><td> </td><td> </td></tr> <tr><td> </td><td> </td></tr> </table>																		<b>MAST ARM SIGNAL ASSEMBLIES</b> <b>M-3, M-2</b>	
DATE 2-11-93		DWG. NO. 404.1023	SHEET 1 OF 1																



**NOTES:**

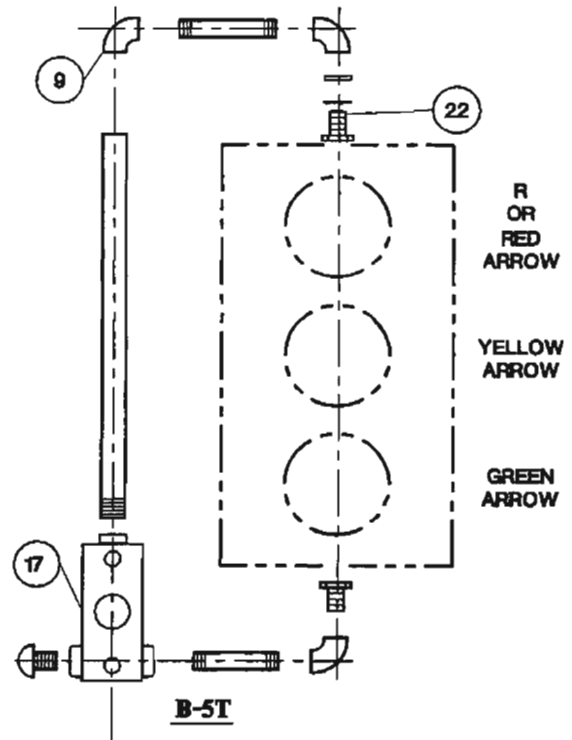
1. SEE DRAWING NO. 404.1005 FOR ITEMIZED PARTS.
2. SEE DRAWING NO. 404.1410 FOR ARROW LENS.
3. ALL INDICATIONS ARE 12" NOMINAL (GLASS).
4. SEE SIGNAL PLANS FOR BACKPLATE REQUIREMENTS.
5. SEE SIGNAL PLANS FOR R OR RED ARROW INDICATION.
6. ALL BOTTOM NIPPLES ARE 18" AND TOP NIPPLES ARE 18 1/2".



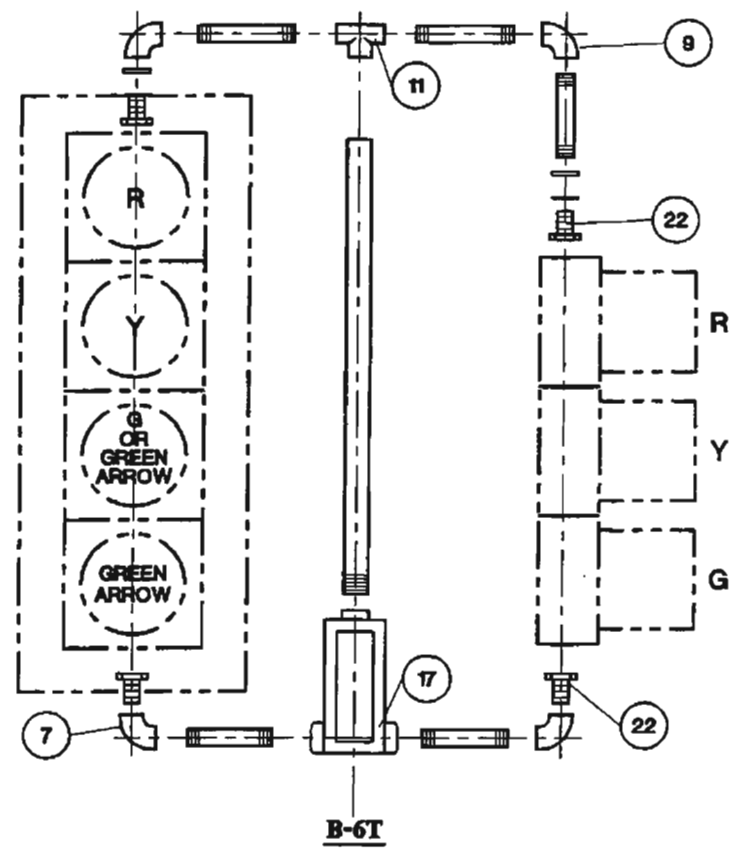
SPECIFICATION REFERENCE	

**UNIFORM STANDARD DRAWINGS  
CLARK COUNTY AREA**

**SIGNAL ASSEMBLIES  
B-1T, B-2T, B-3T**



**B-5T**

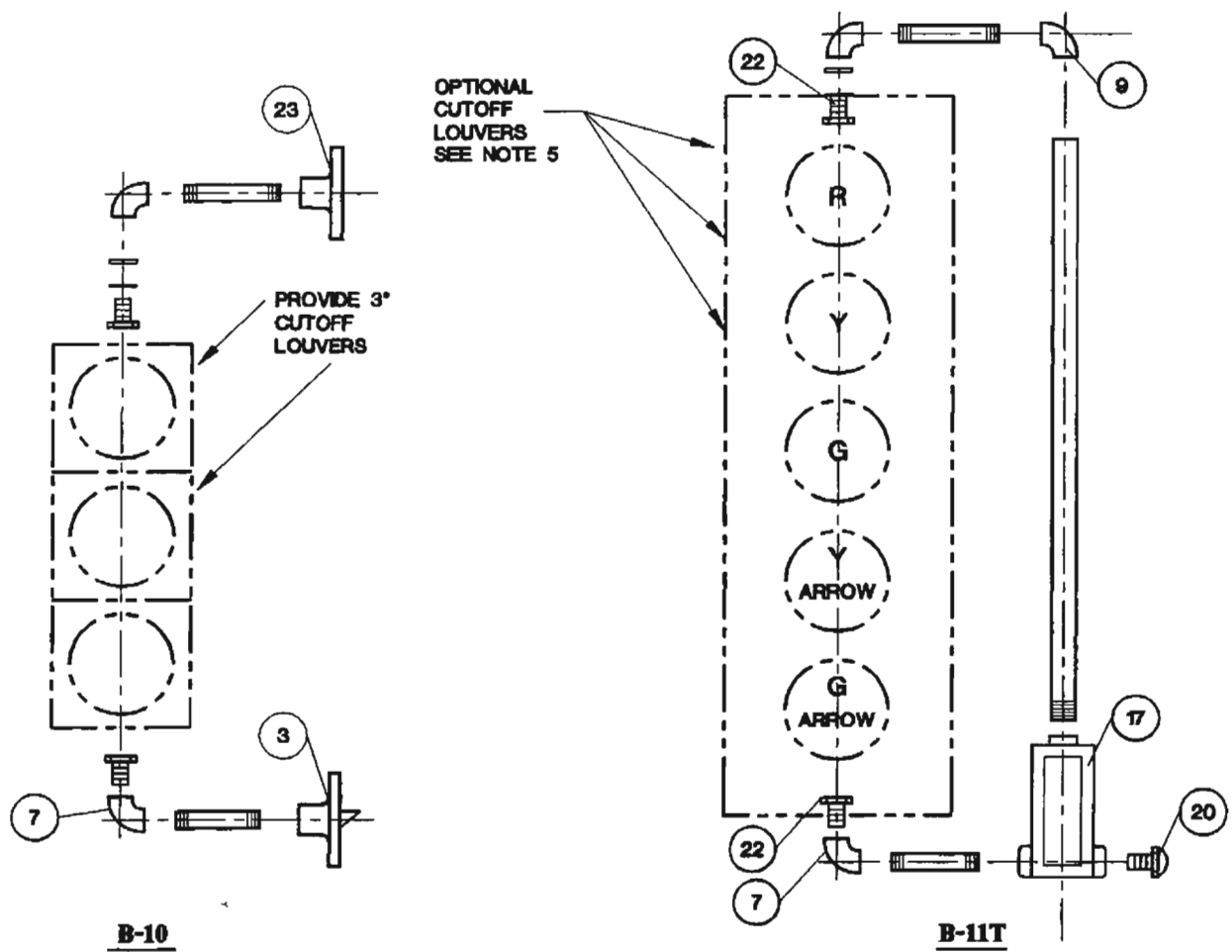


**B-6T**

**NOTES:**

1. SEE DRAWING NO. 404.1005 FOR ITEMIZED PARTS.
2. SEE DRAWING NO. 404.1410 FOR ARROW LENS.
3. ALL INDICATIONS ARE 12" NOMINAL (GLASS).
4. SEE SIGNAL PLANS FOR BACKPLATE REQUIREMENTS.
5. SEE SIGNAL PLANS FOR R OR RED ARROW INDICATION.
6. ALL BOTTOM NIPPLES ARE 18" AND TOP NIPPLES ARE 18 1/2".

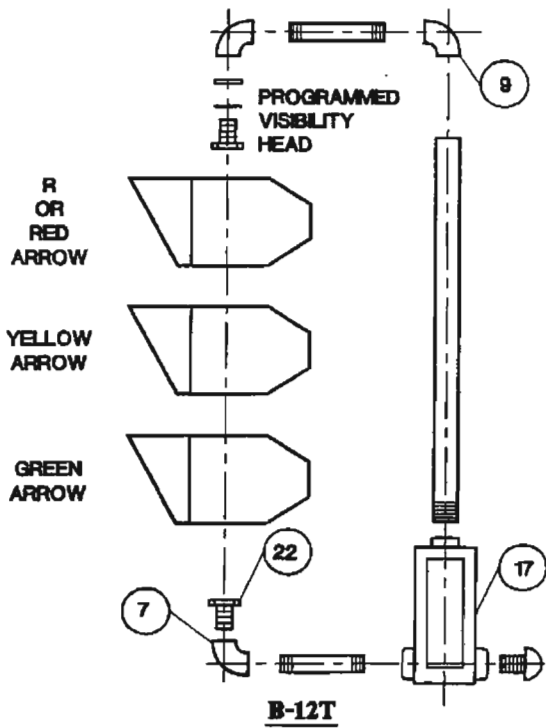
<b>SPECIFICATION REFERENCE</b>	<b>UNIFORM STANDARD DRAWINGS CLARK COUNTY AREA</b>	
	<b>SIGNAL ASSEMBLIES B-5T, B-6T</b>	
	DATE 2-11-93	DWG. NO. 404.1025
	SHEET 1 OF 1	



**NOTES:**

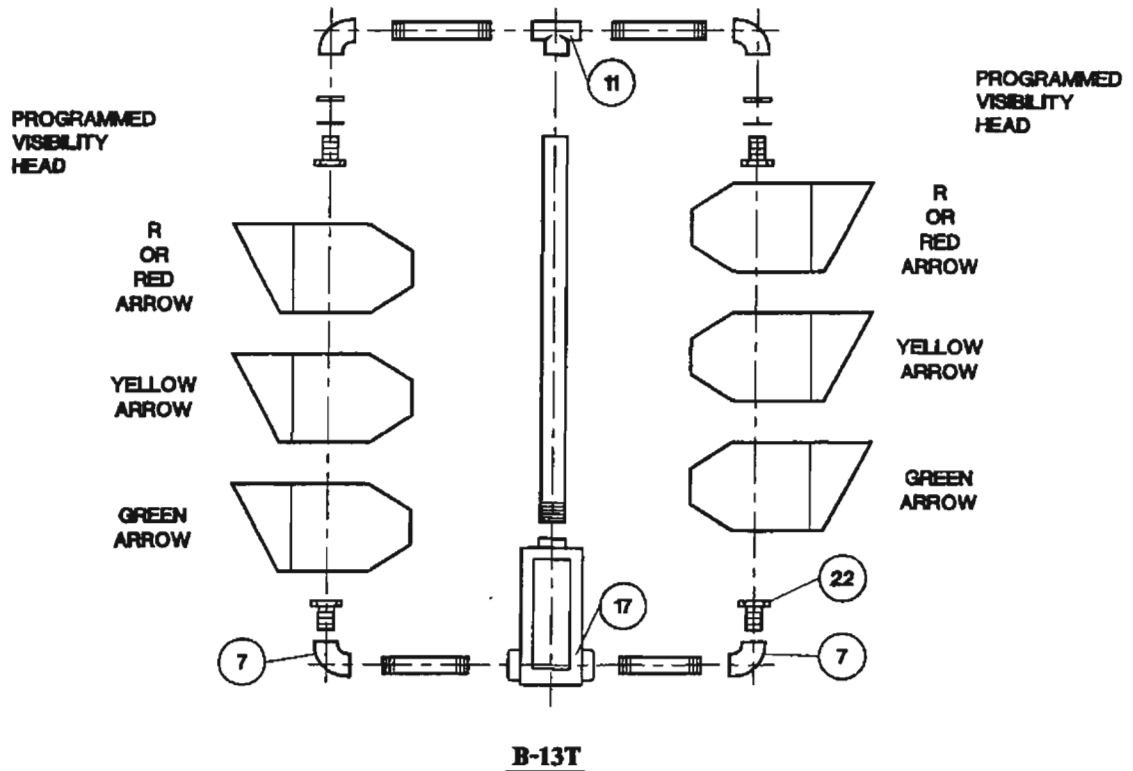
1. ALL SIGNALS ARE 12" NOMINAL (GLASS).
2. FOR ITEMIZED PARTS SEE DRAWING 404.1005.
3. FOR ARROW LENS SEE DRAWING 404.1410.
4. SEE PLANS FOR BACKPLATE REQUIREMENTS.
5. OPTIONAL 3" CUTOFF LOUVERS ON RED, YELLOW AND GREEN BALL INDICATIONS ON 5-SECTION HEADS MAY BE PROVIDED AS DIRECTED BY THE TRAFFIC ENGINEER.

<b>SPECIFICATION REFERENCE</b>	<b>UNIFORM STANDARD DRAWINGS CLARK COUNTY AREA</b>		
	<b>SIGNAL ASSEMBLIES B-10, B-11T</b>		
	DATE 5-12-94	DWG. NO. 404.1027	SHEET 1 OF 1

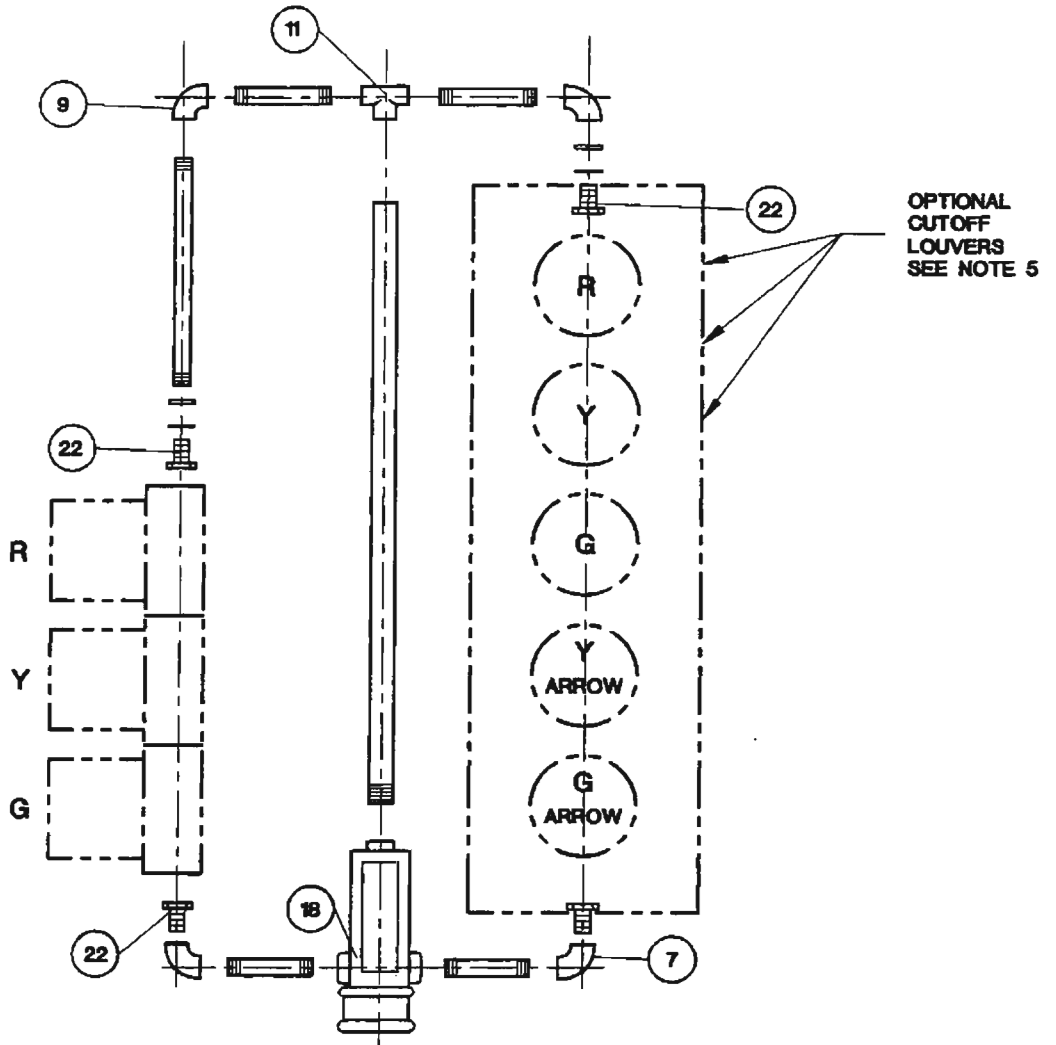


**NOTES:**

1. SEE DRAWING NO. 404.1005 FOR ITEMIZED PARTS.
2. SEE STANDARD SPECIFICATIONS FOR PROGRAMMED VISIBILITY HEADS.
3. SEE SIGNAL PLANS FOR BACKPLATE REQUIREMENTS.
4. SEE SIGNAL PLANS FOR R OR RED ARROW INDICATION.
5. ALL BOTTOM NIPPLES ARE 18" AND TOP NIPPLES ARE 18 1/2".



SPECIFICATION REFERENCE		UNIFORM STANDARD DRAWINGS CLARK COUNTY AREA	
		<b>SIGNAL ASSEMBLIES B-12T, B-13T</b>	
		DATE 2-11-93	DWG. NO. 404.1028
		SHEET 1 OF 1	

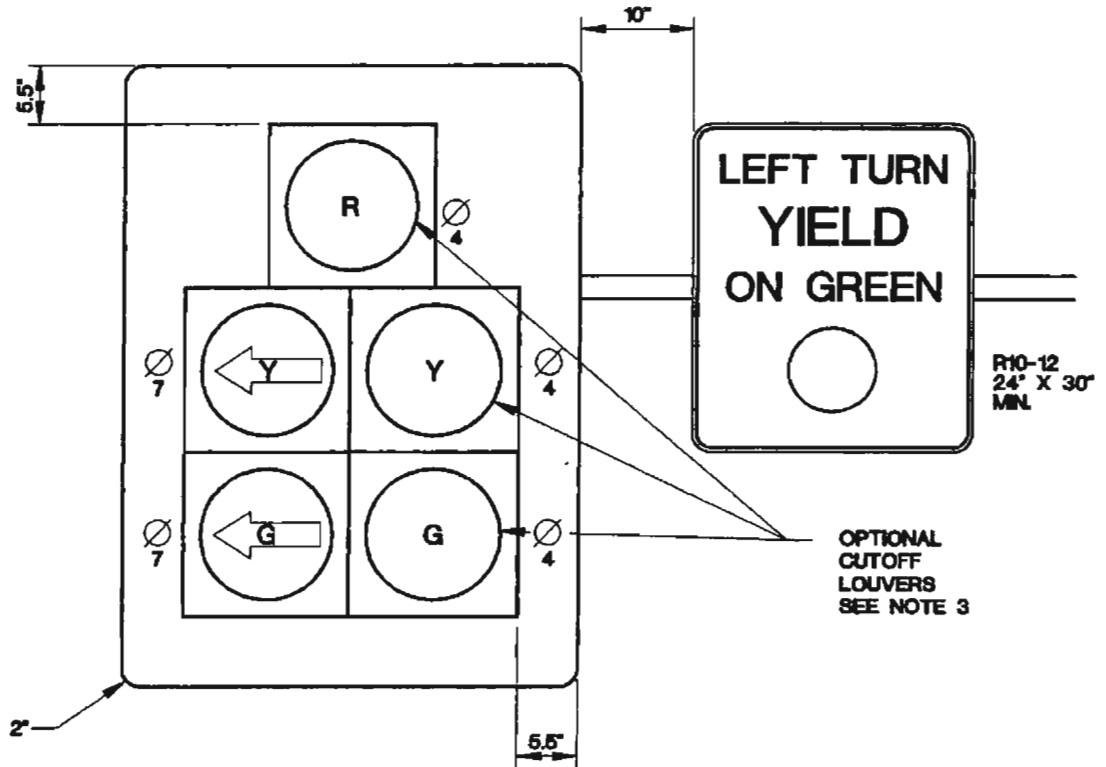


**B-14T**

**NOTES:**

1. FOR ITEMIZED PARTS SEE DRAWING NO. 404.1005.
2. FOR ARROW LENS SEE DRAWING NO. 404.1410.
3. SEE PLANS FOR BACKPLATE REQUIREMENTS.
4. ALL SIGNALS ARE 12" NOMINAL (GLASS).
5. OPTIONAL 3° CUTOFF LOUVERS ON RED, YELLOW AND GREEN BALL INDICATIONS ON 5-SECTION HEADS MAY BE PROVIDED AS DIRECTED BY THE TRAFFIC ENGINEER.

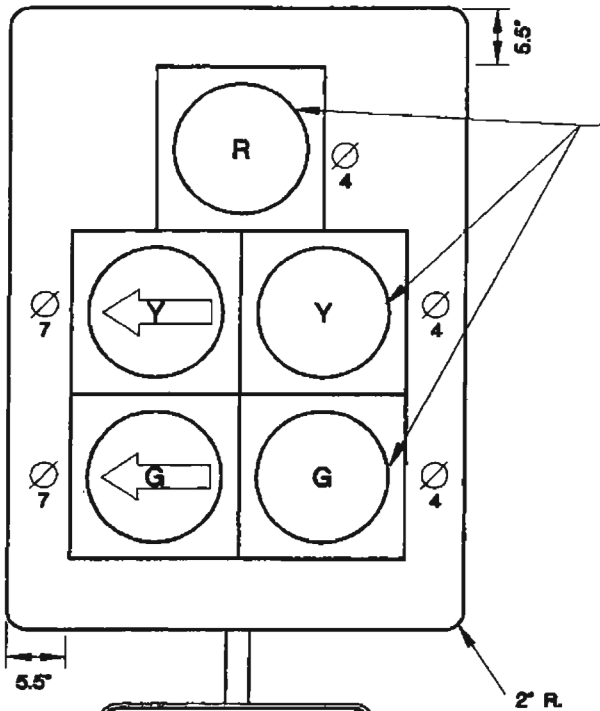
SPECIFICATION REFERENCE		UNIFORM STANDARD DRAWINGS CLARK COUNTY AREA		
		<b>SIGNAL ASSEMBLIES B-14T</b>		
		DATE 5-12-94	DWG. NO. 404.1029	SHEET 1 OF 1



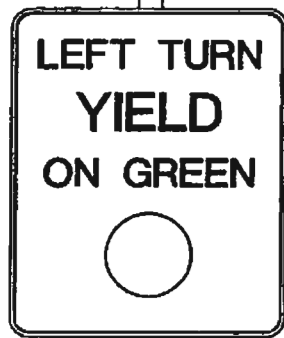
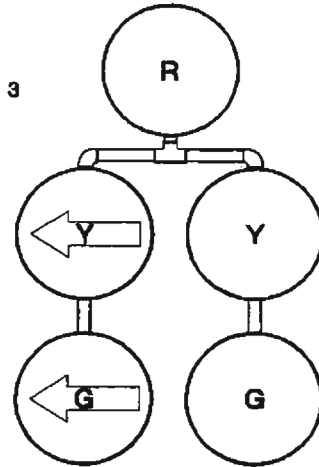
**NOTES:**

1. ALL BACKPLATES SHALL BE LOUVERED.
2. ALL LENSES SHALL BE GLASS.
3. OPTIONAL 3" CUTOFF LOUVERS ON RED, YELLOW AND GREEN BALL INDICATIONS MAY BE PROVIDED AS DIRECTED BY THE TRAFFIC ENGINEER.

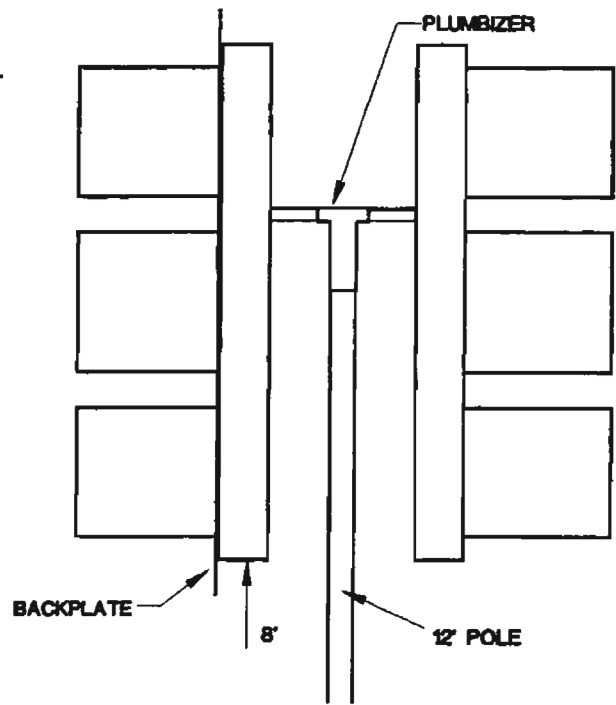
SPECIFICATION REFERENCE		UNIFORM STANDARD DRAWINGS CLARK COUNTY AREA	
		PROTECTED / PERMISSIVE M-5 SIGNAL HEADS	
		DATE 5-12-84	DWG. NO. 404.1030
		SHEET 1 OF 1	



OPTIONAL  
CUTOFF  
LOUVERS  
SEE NOTE 3



R10-12  
24" X 30"  
MIN.

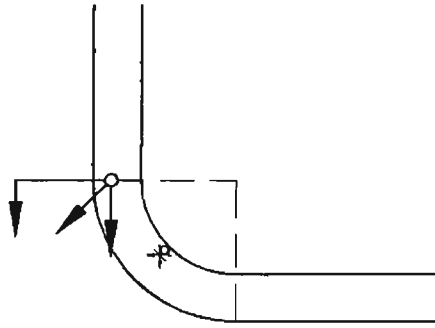


SIDE VIEW

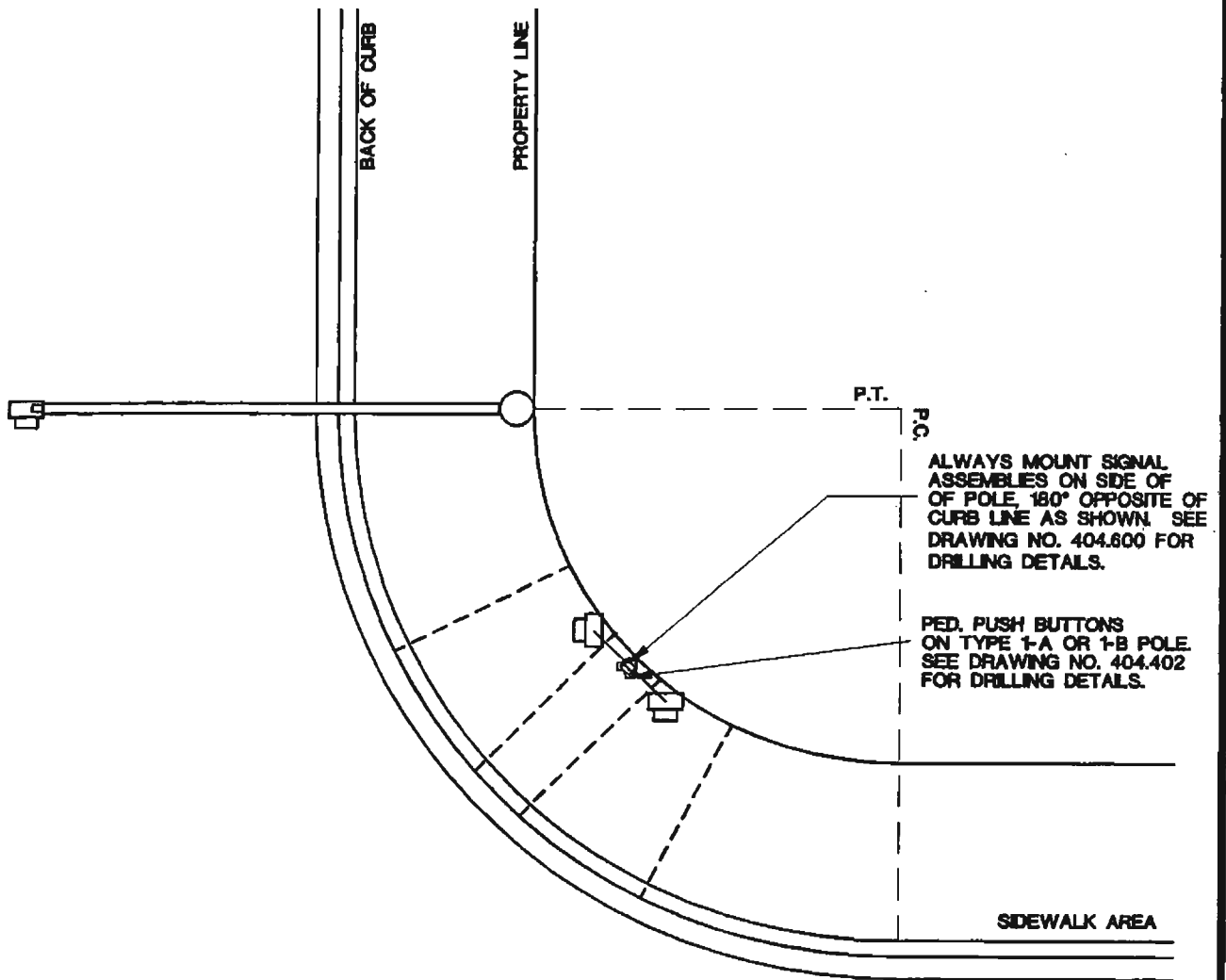
NOTES:

1. ALL BACKPLATES SHALL BE LOUVERED.
2. ALL LENSES SHALL BE GLASS.
3. OPTIONAL 3° CUTOFF LOUVERS ON RED, YELLOW AND GREEN BALL INDICATIONS MAY BE PROVIDED AS DIRECTED BY THE TRAFFIC ENGINEER.

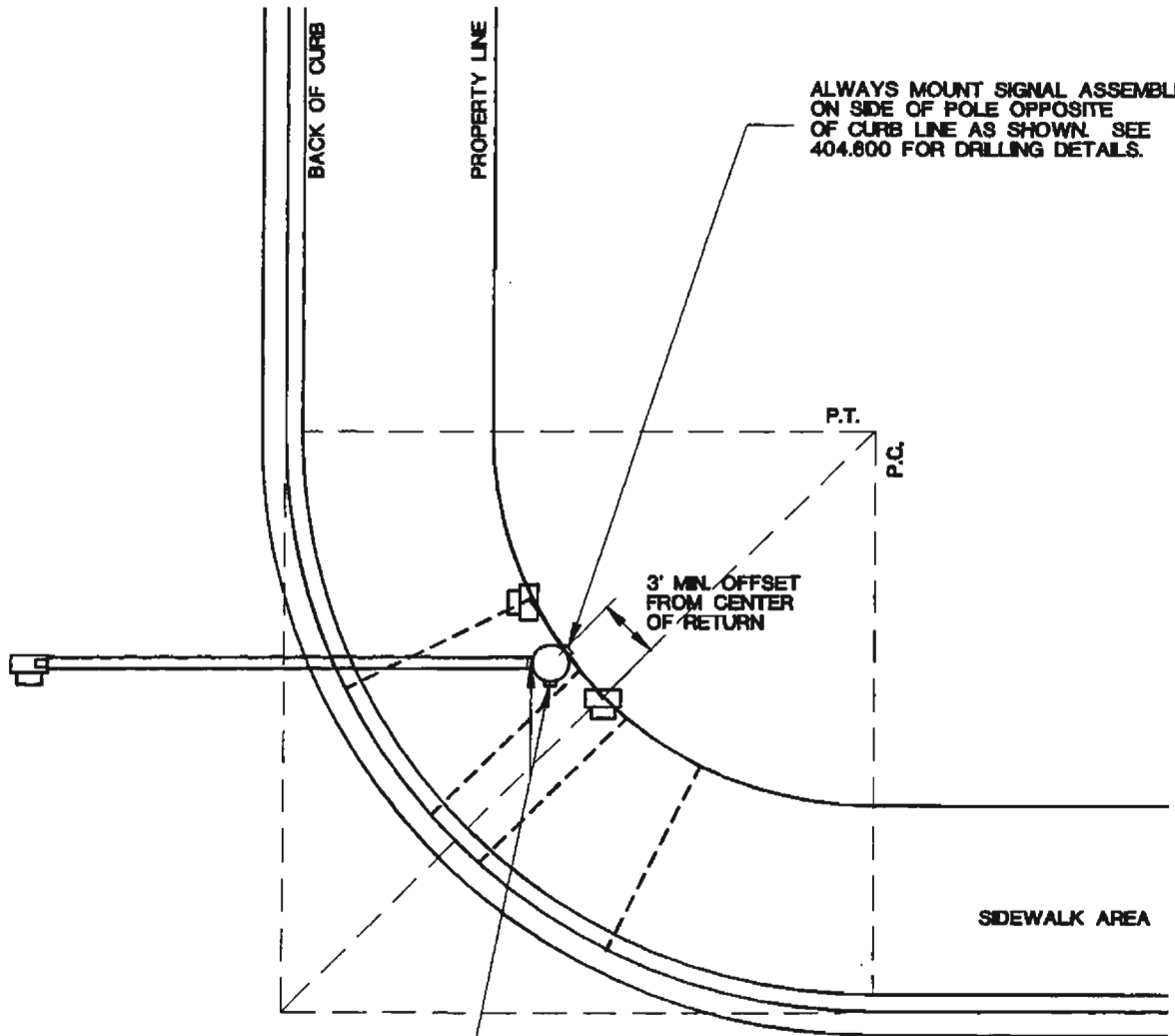
SPECIFICATION REFERENCE		UNIFORM STANDARD DRAWINGS CLARK COUNTY AREA	
		<b>PROTECTED / PERMISSIVE M-5 SIGNAL HEADS</b>	
		DATE 5-12-94	DWG. NO. 404.1031
		SHEET 1 OF 3	



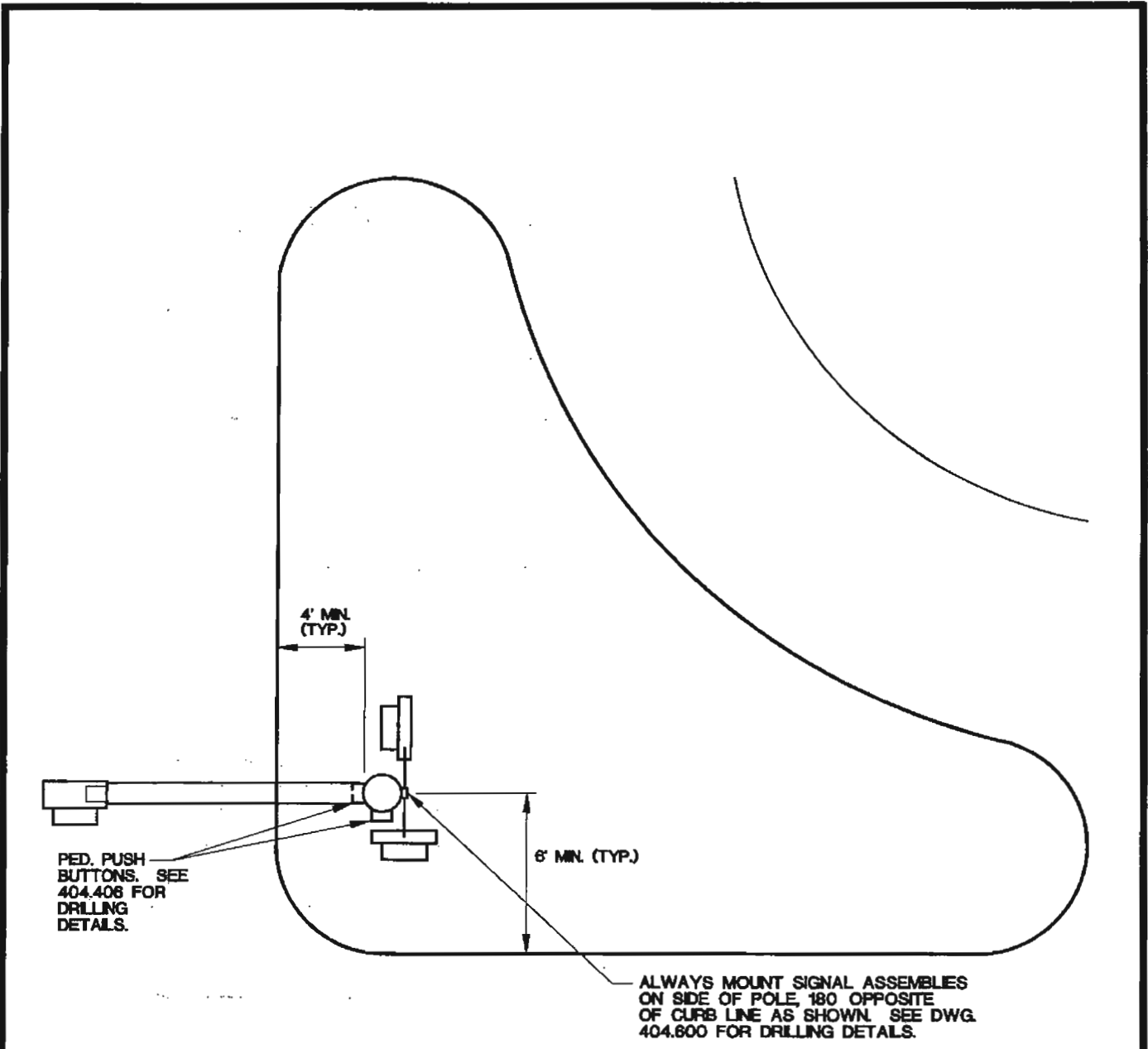
**TYPICAL PLANS SYMBOLS**



SPECIFICATION REFERENCE		UNIFORM STANDARD DRAWINGS CLARK COUNTY AREA	
		<b>POLE LOCATION &amp; SIGNAL MOUNTING AT INTERSECTION</b>	
		DATE 7-8-93	DWG. NO. 404.1300
		SHEET 1 OF 2	

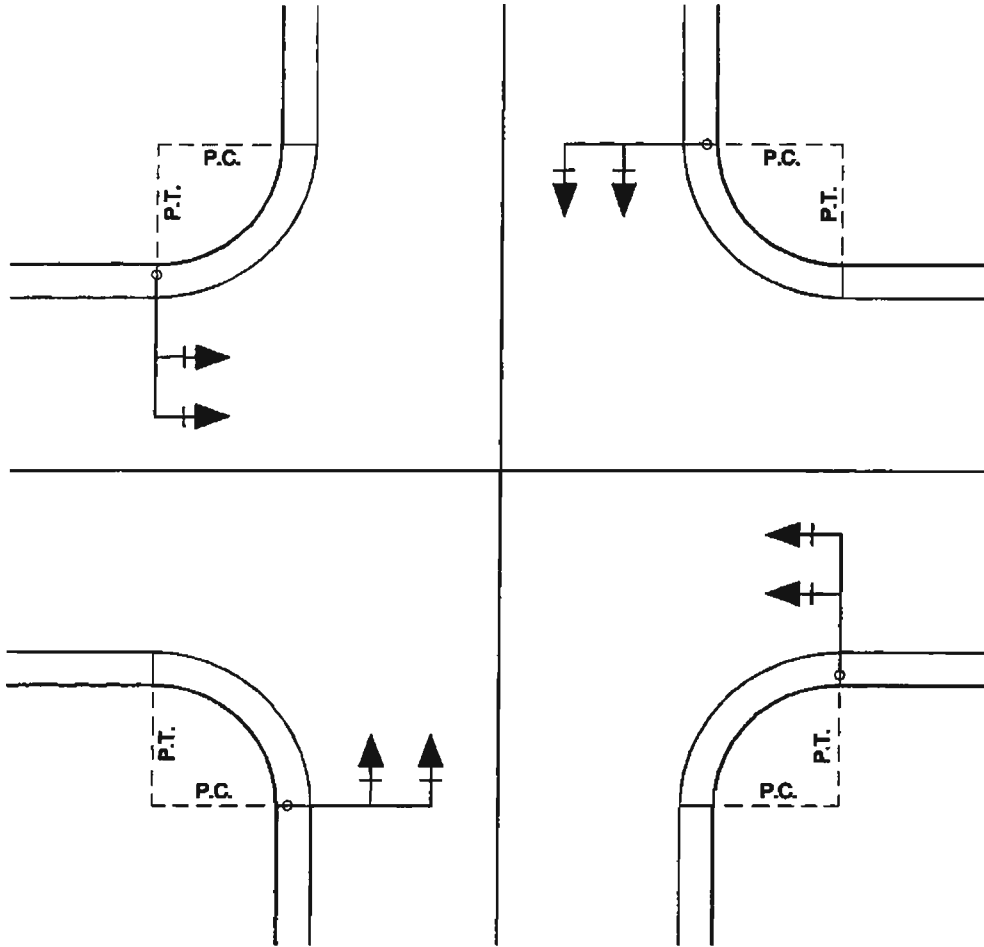


SPECIFICATION REFERENCE		UNIFORM STANDARD DRAWINGS CLARK COUNTY AREA	
		POLE LOCATION & SIGNAL MOUNTING AT INTERSECTION (CENTER OF RETURN)	
		DATE 7-8-93	DWG. NO. 404.1300
			SHEET 2 OF 2



**NOTE:**  
 SIDEWALK RAMP IN ACCORDANCE WITH DRAWING NO. 235 SHALL BE CONSTRUCTED. HANDICAPPED ACCESS MUST BE IN COMPLIANCE WITH THE AMERICANS WITH DISABILITIES ACT (ADA).

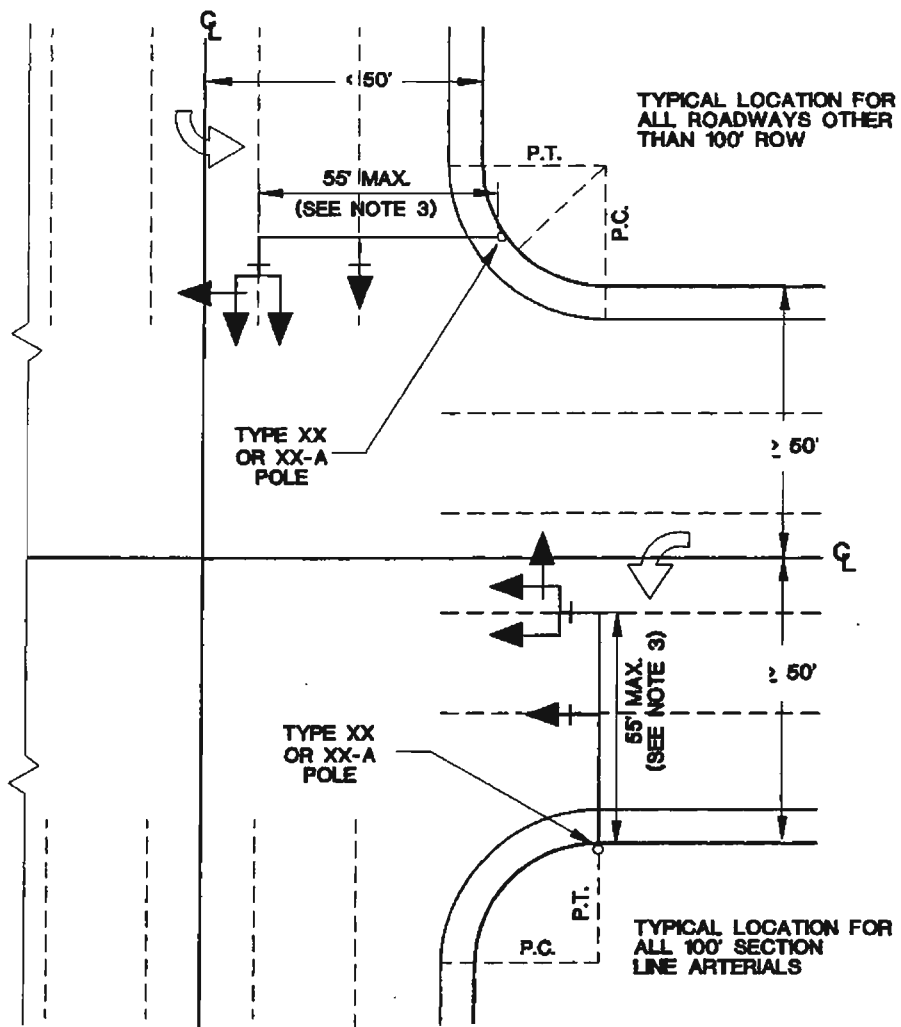
<b>SPECIFICATION REFERENCE</b>		<b>UNIFORM STANDARD DRAWINGS CLARK COUNTY AREA</b>	
		<b>POLE LOCATION AND SIGNAL MOUNTING ON RIGHT TURN ISLANDS</b>	
		DATE 7-8-93	DWG. NO. 404.1301
		SHEET 1 OF 1	



**NOTE:**

1. SEE PLANS FOR FOUNDATION TYPE.

<b>SPECIFICATION REFERENCE</b>		<b>UNIFORM STANDARD DRAWINGS CLARK COUNTY AREA</b>	
		<b>FUTURE POLE LOCATION CASE I (EXCEPT CITY OF LAS VEGAS)</b>	
		DATE 7-8-93	DWG. NO. 404.1302
		SHEET 1 OF 2	



**NOTES:**

1. FOUNDATIONS WILL BE 36" SQUARE OR ROUND AND 12 FT. DEEP. THE AREA SHALL REMAIN ACCESSIBLE FOR THESE FOUNDATIONS.
2. TRAFFIC SIGNAL POLES SHALL REMAIN AT THE MIDDLE OF THE RETURN BEHIND THE SIDEWALK SO THAT THE OUTSIDE SIGNAL HEAD IS DIRECTLY ABOVE THE LEFT TURN LANE.
3. WITHIN THE CITY OF LAS VEGAS, THE MAST ARM SHALL NOT EXCEED 55' IN LENGTH. TRAFFIC SIGNAL POLES MAY BE LOCATED ON THE P.T. TO MAINTAIN A 55' MAXIMUM MAST ARM LENGTH.
4. A TYPE 1" FOUNDATION IS RECOMMENDED FOR MAST ARMS 45' OR LESS. SEE DRAWING NO. 404.208.
5. A TYPE 1" FOUNDATION IS REQUIRED FOR MAST ARMS LONGER THAN 45'. SEE DRAWING NO. 404.209.
6. A MINIMUM OF 32" SHALL BE MAINTAINED BETWEEN TRAFFIC SIGNAL POLE FOUNDATION "CRASH CAP" AND THE BACK OF THE CURB FOR WHEELCHAIR CLEARANCE.
7. THE TRAFFIC ENGINEER WILL MAKE THE FINAL DETERMINATION FOR THE LOCATION OF TRAFFIC SIGNAL POLES.

SPECIFICATION REFERENCE	UNIFORM STANDARD DRAWINGS CLARK COUNTY AREA		
	FUTURE POLE LOCATION CASE II		
	DATE 7-8-93	DWG. NO. 404.1302	SHEET 2 OF 2