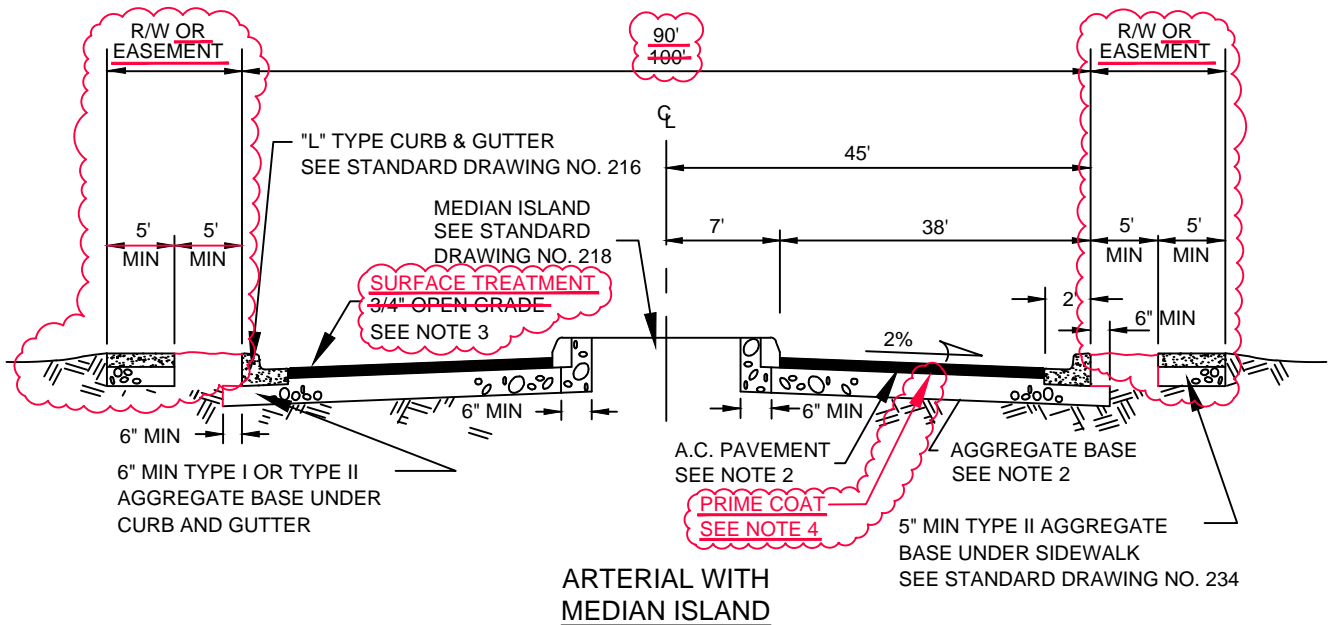


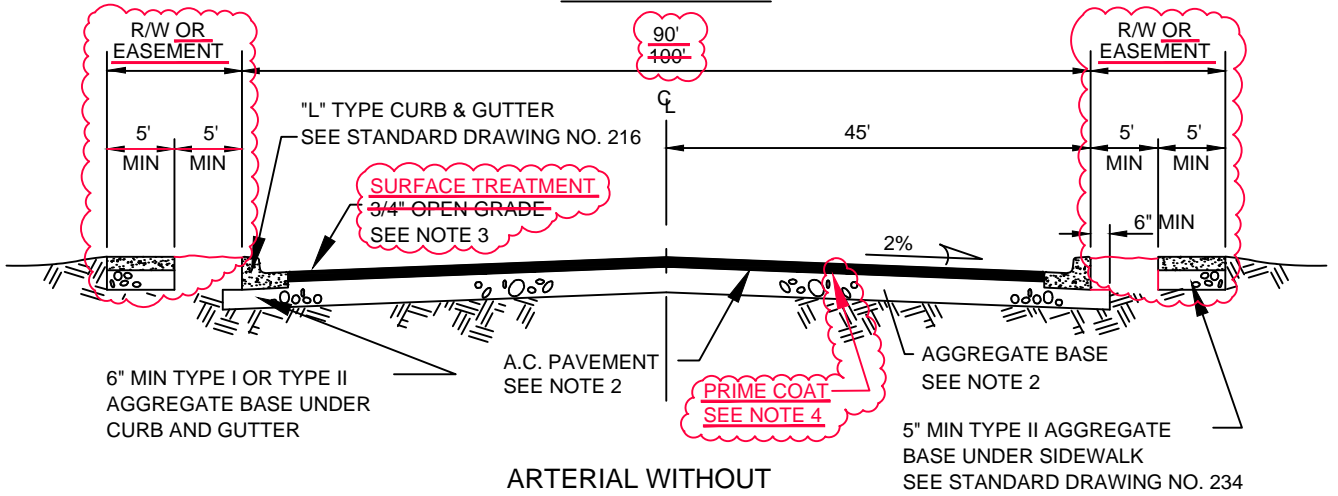
**UNIFORM STANDARD DRAWINGS
CLARK COUNTY AREA, NEVADA**

YEAR 2014 REVISIONS

<u>DRAWING</u>	<u>TITLE AND REVISIONS SUMMARY</u>	<u>EFFECTIVE DATE</u>
202	"Arterial Urban Area Street Sections" – Drawing revised to specify the final asphalt concrete pavement surface material used by each entity.	7/1/2014
203	"Arterial Alternate Urban Area Street Sections with Offset Sidewalk" - Drawing revised to specify the final asphalt concrete pavement surface material used by each entity.	7/1/2014
205	"Collector Urban Area Street Sections with Curbside Sidewalk" - Drawing revised to specify the final asphalt concrete pavement surface material used by each entity.	7/1/2014
205.1.S1	"Collector Alternate Urban Area Street Sections with Offset Sidewalk" – Drawing revised to specify the final asphalt concrete pavement surface material used by each entity.	7/1/2014
300.S3	"Streetlight location L.E.D. Lighting Standards and General Notes" – New supplemental drawing for L.E.D. lighting along public streets.	7/1/2014
405.2	"Type II-SD Manhole" – New drawing for multiple reinforced concrete box and pipe configurations.	7/1/2014
422	"Type 'CM' Drop Inlet" – New drawing to accommodate a drop inlet that aligns with the back of curb.	1/1/2014
425.S1	"Through-Lot Drain" – New drawing for surface drainage conveyance facilities.	7/1/2014
507.S1	"Method for Geotechnical Boring and Monitoring Well Backfill and Patch for Borings 12-Inches or Less in Diameter" – New supplemental drawings for pavement patching of geotechnical and monitor well borings in paved areas.	7/1/2014
761	"P30" Pullbox" – Drawing revised to allow for tapered sidewalls.	7/1/2014
808	"Loading Information" – Drawing revised to accommodate flashing yellow arrow traffic signal indications.	7/1/2014
810	"Loading Information" – Drawing revised to accommodate flashing yellow arrow traffic signal indications.	7/1/2014
840	"Louvered Backplate for Mast Arm Mounted Signal" – Drawing revised to accommodate flashing yellow arrow traffic signal indications.	7/1/2014
841	"Louvered Backplate for Pole Mounted Signal" – Drawing revised to accommodate flashing yellow arrow traffic signal indications.	7/1/2014
843	"Signal Assemblies Post Top Mount" – New drawing to accommodate flashing yellow arrow traffic signal indications.	7/1/2014
844	"Signal Assemblies Bracket Mount" – New drawing to accommodate flashing yellow arrow traffic signal indications.	7/1/2014
857	"Protected Permissive Mast Arm Signal Assembly Type M-4" – New drawing to accommodate flashing yellow arrow traffic signal indications.	7/1/2014
888.1	"Future Pole Location – Case II" – Drawing revised to accommodate flashing yellow arrow traffic signal indications.	7/1/2014



ARTERIAL WITH MEDIAN ISLAND



ARTERIAL WITHOUT MEDIAN ISLAND

NOTES:

1. FINAL A.C. PAVEMENT SURFACE SHALL BE 1/2" MAXIMUM ABOVE LIP OF GUTTER. PAVEMENT SHALL BE FLUSH WITH LIP AT SIDEWALK RAMPS.
2. STRUCTURAL SECTION SHALL BE IN ACCORDANCE WITH STANDARD SPECIFICATION SECTION 401 AND STANDARD DRAWING 200.

~~3. A 3/4" OPEN GRADE IS REQUIRED ON CLARK COUNTY ROADWAYS AND MAY BE REQUIRED IN OTHER JURISDICTIONS AS DETERMINED BY THE ENTITY'S ENGINEER. THE FINAL A.C. PAVEMENT SURFACE MATERIAL REQUIREMENTS ARE:~~

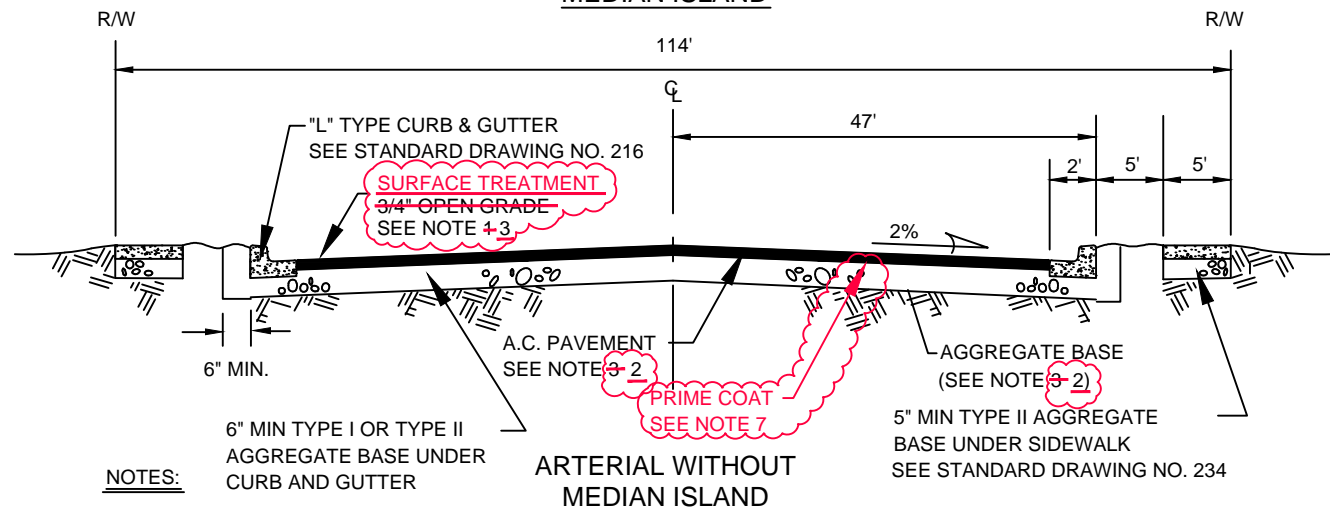
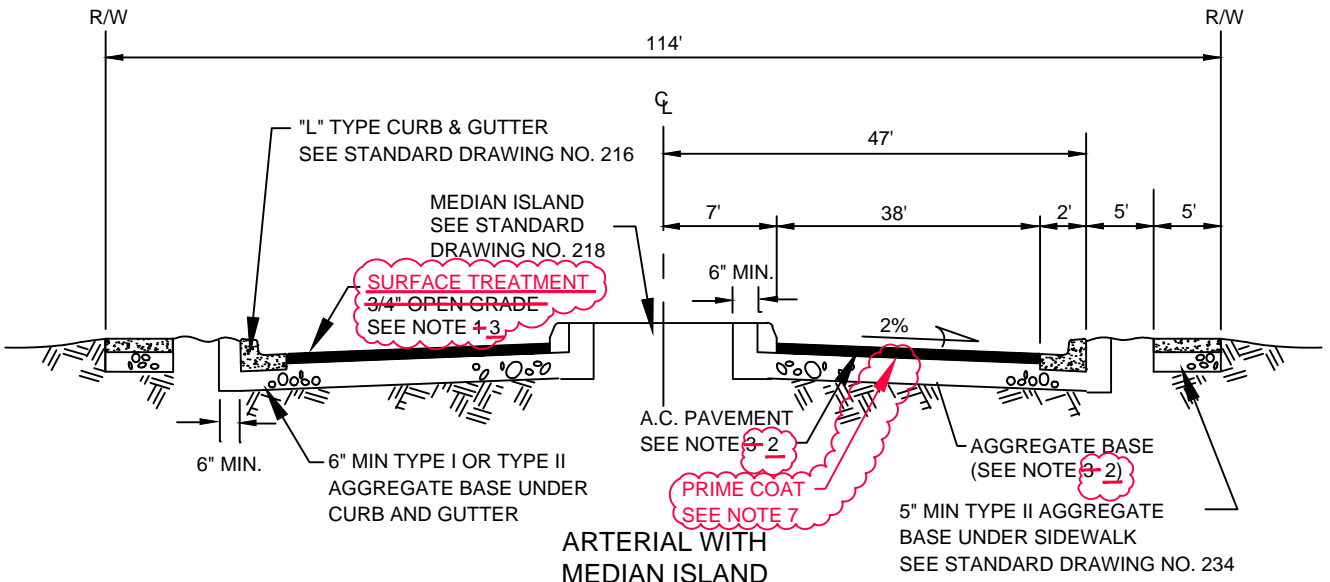
JURISDICTION	A.C. PAVEMENT SURFACE MATERIAL
CLV	1-INCH UTACS
CC, HEN, MES, BC	FOG SEAL
NLV, HEN	FOG SEAL AND/OR OPEN GRADE

~~4. IF OPEN GRADE IS REQUIRED DENSE GRADE SHALL BE FLUSH WITH LIP OF GUTTER AND FINAL A.C. PAVEMENT SURFACE SHALL BE 3/4" MAXIMUM ABOVE LIP OF GUTTER. FINAL A.C. PAVEMENT SURFACE SHALL BE FLUSH WITH LIP AT SIDEWALK RAMPS.~~

~~5. 4. FOG SEAL AND PRIME COAT IS NOT REQUIRED IN THE CITIES OF LAS VEGAS, AND NORTH LAS VEGAS HENDERSON, MESQUITE, AND BOULDER CITY WHEN A.C. THICKNESS IS >=5 IN.~~

AGENCY APPROVED B C H L M N

SPECIFICATION REFERENCE		UNIFORM STANDARD DRAWINGS CLARK COUNTY AREA	
302	AGGREGATE BASE	ARTERIAL URBAN AREA STREET SECTIONS WITH CURBSIDE SIDEWALK	
401	BITUMINOUS PAVEMENT		
403	OPEN GRADE		
413	BITUMINOUS GAP GRADED PAVEMENT		
501	CONCRETE		
		DATE 11-10-04	DWG. NO. 202



NOTES:

1. FINAL A.C. PAVEMENT SURFACE (INCLUDING OPEN GRADE) SHALL BE 3/4 1/2" MAXIMUM ABOVE LIP OF GUTTER. PAVEMENT SHALL BE FLUSH WITH LIP AT SIDEWALK RAMPS.
2. DENSE GRADE SHALL BE FLUSH WITH LIP OF GUTTER.
3. 2. STRUCTURAL SECTION SHALL BE IN ACCORDANCE WITH STANDARD SPECIFICATION SECTION 401 AND STANDARD DRAWING NO. 200.
3. THE FINAL A.C. PAVEMENT SURFACE MATERIAL REQUIREMENTS ARE:

JURISDICTION	A.C. PAVEMENT SURFACE MATERIAL
CLV	1-INCH UTACS
CC, HEN, MES, BC	FOG SEAL
NLV, HEN	FOG SEAL AND/OR OPEN GRADE

4. THIS STANDARD IS AN ALTERNATE STREET SECTION TO BE USED AT LOCATIONS DETERMINED BY EACH LOCAL JURISDICTION. NO ABOVE GROUND OBJECTS SHALL BE PLACED WITHIN THE 5 FOOT SIDEWALK.
5. UNDERGROUND DRY UTILITIES SHOULD BE PLACED IN A UTILITY CORRIDOR UNDER THE SIDEWALK.
6. INCREASE PAVEMENT WIDTH BY 11 FEET ON EACH SIDE OF ROADWAY FOR AN 8 LANE CROSS SECTION.

7. PRIME COAT IS NOT REQUIRED IN LAS VEGAS, HENDERSON, MESQUITE, AND BOULDER CITY WHEN A.C. THICKNESS IS >= 5 IN.

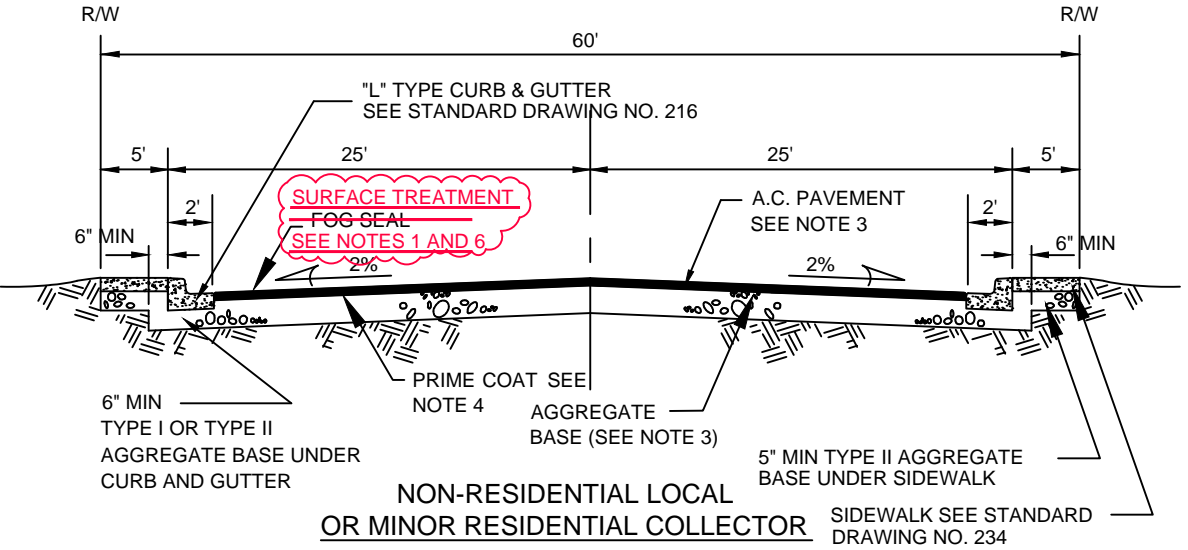
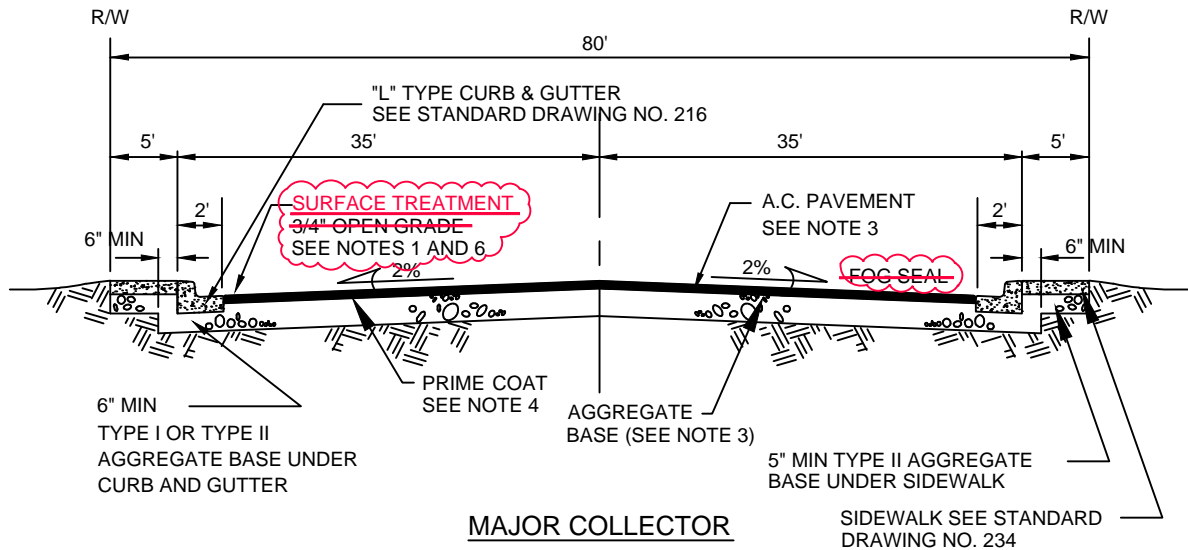
AGENCY APPROVED (B) (C) (H) (L) (M) N

SPECIFICATION REFERENCE	
302	AGGREGATE BASE
401	BITUMINOUS PAVEMENT
403	OPEN GRADE
413	BITUMINOUS GAP GRADED PAVEMENT
501	CONCRETE

UNIFORM STANDARD DRAWINGS
CLARK COUNTY AREA

ARTERIAL
ALTERNATE URBAN AREA STREET SECTIONS
WITH OFFSET SIDEWALK

DATE 11-10-04 | DWG. NO. 203

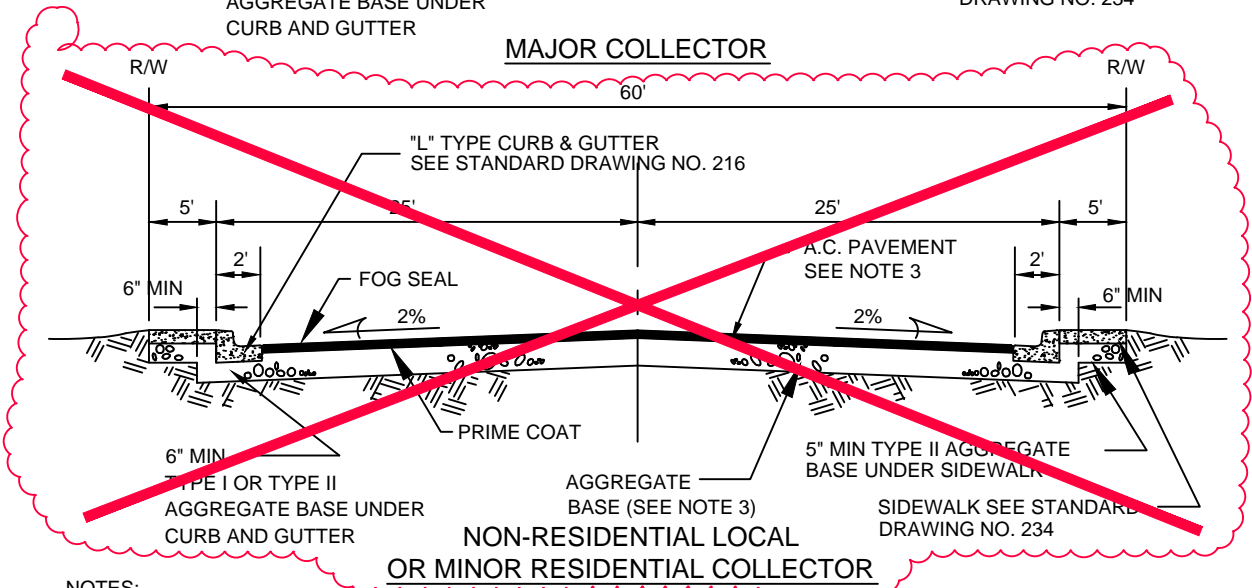
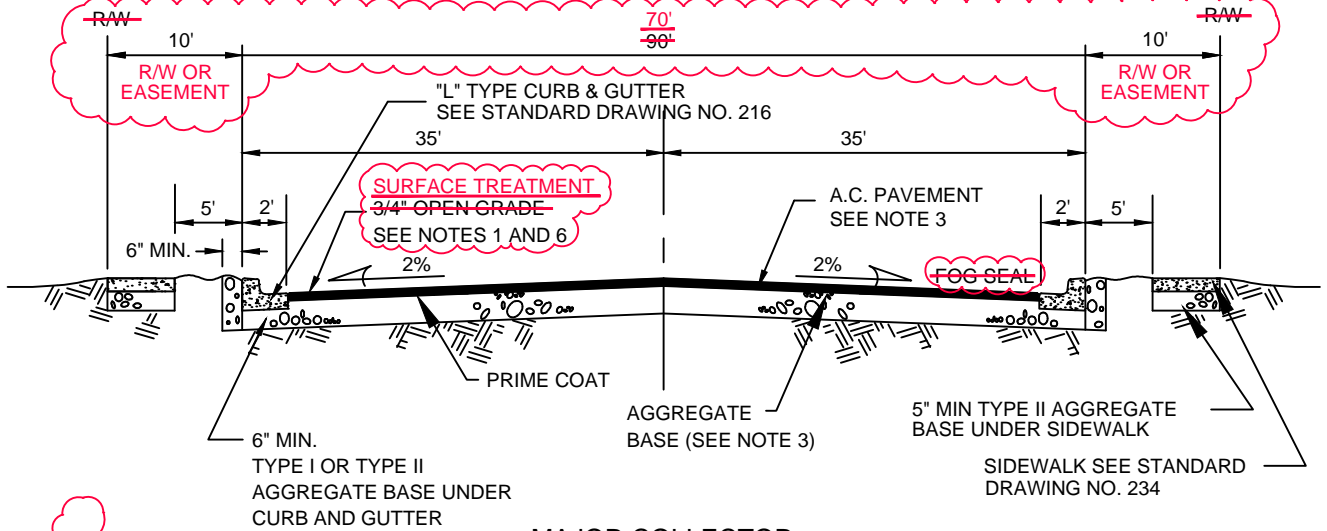


NOTES:

1. A.C. PAVEMENT TO BE 1/2" MAXIMUM ABOVE LIP OF GUTTER AFTER COMPACTION. PAVEMENT SHALL BE FLUSH WITH LIP AT SIDEWALK RAMPS.
2. THE GRADE BREAK OCCURRING IN THE CROSS SECTION SHALL FALL BETWEEN DRIVING LANES.
3. STRUCTURAL SECTION SHALL BE IN ACCORDANCE WITH STANDARD SPECIFICATION SECTION 401 AND STANDARD DRAWING NOS. 200 AND 200.1.
4. PRIME COAT IS NOT REQUIRED IN LAS VEGAS, HENDERSON, MESQUITE OR BOULDER CITY WHEN A.C. THICKNESS >= 5 IN.
5. 4 INCH MINIMUM THICKNESS REQUIRED IN HENDERSON, MESQUITE AND BOULDER CITY.
6. ~~A 3/4" OPEN GRADE IS REQUIRED ON CLARK COUNTY ROADWAYS AND MAY BE REQUIRED IN OTHER JURISDICTIONS AS DETERMINED BY THE ENTITY'S ENGINEER. THE FINAL A.C. PAVEMENT SURFACE MATERIAL REQUIREMENTS ARE:~~

JURISDICTION	A.C. PAVEMENT SURFACE MATERIAL
CLV	1-INCH UTACS (80-FT OR GREATER)
CC, HEN, MES, BC	FOG SEAL
NLV, HEN	FOG SEAL AND/OR OPEN GRADE

SPECIFICATION REFERENCE		AGENCY APPROVED					
		B	C	H	L	M	N
302		UNIFORM STANDARD DRAWINGS					
401		CLARK COUNTY AREA					
406		COLLECTOR					
407							
413		WITH CURBSIDE SIDEWALK					
501							



NOTES:

1. A.C. PAVEMENT TO BE 1/2" MAXIMUM ABOVE LIP OF GUTTER AFTER COMPACTION. PAVEMENT SHALL BE FLUSH WITH LIP AT SIDEWALK RAMPS.
2. THE GRADE BREAK OCCURRING IN THE CROSS SECTION SHALL FALL BETWEEN DRIVING LANES.
3. STRUCTURAL SECTION SHALL BE IN ACCORDANCE WITH STANDARD SPECIFICATION SECTION 401 AND STANDARD DRAWING NOS. 200 AND 200.1.
4. THIS STANDARD IS AN ALTERNATE STREET SECTION TO BE USED AT LOCATIONS DETERMINED BY EACH LOCAL JURISDICITON. NO ABOVE GROUND OBJECTS SHALL BE PLACED WITHIN THE 5 FOOT SIDEWALK.
5. UNDERGROUND DRY UTILITIES SHOULD BE PLACED IN A UTILITY CORRIDOR UNDER THE SIDEWALK.

~~6. A 3/4" OPEN GRADE IS REQUIRED ON CLARK COUNTY ROADWAYS AND MAY BE REQUIRED IN OTHER JURISDICTIONS AS DETERMINED BY THE ENTITY'S ENGINEER. THE FINAL A.C. PAVEMENT SURFACE MATERIAL REQUIREMENTS ARE:~~

JURISDICTION	A.C. PAVEMENT SURFACE MATERIAL
CLV	1-INCH UTACS
CC	FOG SEAL
NLV, HEN	FOG SEAL AND/OR OPEN GRADE

~~7. PRIME COAT IS NOT REQUIRED IN LAS VEGAS, HENDERSON, MESQUITE, OR BOULDER CITY WHEN A.C. THICKNESS >=5 IN.~~

AGENCY APPROVED		<input checked="" type="checkbox"/> B	<input checked="" type="checkbox"/> C	<input checked="" type="checkbox"/> H	<input checked="" type="checkbox"/> L	<input checked="" type="checkbox"/> M	<input type="checkbox"/> N
UNIFORM STANDARD DRAWINGS CLARK COUNTY AREA							
SUPPLEMENTAL DRAWING							
COLLECTOR							
ALTERNATE URBAN AREA STREET SECTIONS WITH OFFSET SIDEWALK							
DATE 11-10-04	DWG. NO. 205.1.S1						

SPECIFICATION REFERENCE	
302	AGGREGATE BASE
401	BITUMINOUS PAVEMENT
406	PRIME COAT
407	FOG SEAL
413	BITUMINOUS GAP GRADED PAVEMENT
501	CONCRETE

1. INSTALL STREETLIGHT STANDARDS AT INTERSECTIONS INCLUDING "L" AND "T" TYPES, PER STANDARD DRAWINGS 301 THROUGH 310 IN ACCORDANCE WITH THE APPROPRIATE RIGHT-OF-WAY.
2. STREET CLASSIFICATION, THE RESPECTIVE LIGHTING LEVELS, AND STREETLIGHT STANDARD APPLICATION IS LISTED IN TABLE 1 BELOW. ACTUAL LUMINAIRE WATTAGE AND/OR STREETLIGHT STANDARD SPACING MAY BE VARIED BY THE ENGINEER, WHEN SUPPORTED BY AN APPROVED LIGHTING STUDY IN ACCORDANCE WITH THE IES RECOMMENDED PRACTICE FOR ROADWAY LIGHTING IN ORDER TO MEET CURRENT AND FUTURE TRAFFIC CONTROL NEEDS AND APPROVED BY THE RESPECTIVE AGENCY. FOR LED FIXTURES, E AVERAGE LEVELS ARE MAINTAINED LEVELS AT A 0.92 MAINTENANCE FACTOR IN FOOTCANDLES MEASURED HORIZONTALLY AT GROUND LEVEL.
3. NEW STREETLIGHT STANDARDS INSTALLED ADJACENT TO OR OPPOSITE FROM EXISTING STREETLIGHTS SHALL MATCH THE EXISTING LOCATION, SPACING, POLE AND LUMINAIRE TYPES UNLESS OTHERWISE DIRECTED BY THE ENGINEER.
4. STREETLIGHT STANDARDS INSTALLED ON 60' OR LESS RIGHT-OF-WAYS MAY BE INSTALLED ON EITHER SIDE OF ROADWAY AS DIRECTED BY THE ENGINEER.
5. TRAFFIC SIGNAL FOUNDATIONS AND ADAPTOR PLATES MAY BE REQUIRED AT INTERSECTIONS AS DIRECTED BY THE ENGINEER.
6. AT LEAST ONE STREETLIGHT SHALL BE REQUIRED IN THE BULB SECTION OF A CUL-DE-SAC OR HAMMERHEAD. LOCATION SHALL BE AS REQUIRED BY THE ENGINEER.
7. FOR A SPECIFIC FIXTURE TO BE APPROVED, AN INDEPENDENT EVALUATION WITH THE AGI32 LIGHTING MODELING SOFTWARE PROGRAM (OR OTHER SOFTWARE APPROVED BY THE AGENCY) SHALL BE SUBMITTED FOR REVIEW BY THE AGENCY. THE IES PHOTOMETRIC FILE SHALL BE LOADED INTO THE MODEL AND ALL REQUISITE INPUTS SHALL CONFORM TO THE LOCATION, HEIGHT, AND OTHER ASSOCIATED FACTORS DESIGNATED IN DRAWINGS 301 THROUGH 310 IN ACCORDANCE WITH THE APPROPRIATE RIGHT-OF-WAY.

TABLE 1

REQUIRED ILLUMINANCE VALUES FOR ROADWAYS					
ROADWAY CLASS	R.O.W. WIDTHS	ROADWAY LIGHTING ILLUMINANCE LEVELS		SIDEWALK / WALKWAY ILLUMINANCE LIGHTING LEVELS	
		MIN. AVG.	UNIFORMITY AVG./MIN.	MIN. ILLUMINANCE	UNIFORMITY AVG./ MIN.
ARTERIAL	100' OR GREATER	1.58 FC	3:1	0.2 FC	4:1
MAJOR COLLECTOR	80' TO 99'	0.84 FC	4:1	0.2 FC	4:1
MINOR COLLECTOR	60' TO 79'	0.38 FC	6:1	0.08 FC	6:1
RESIDENTIAL	51' OR LESS	0.38 FC	6:1	0.08 FC	6:1

		AGENCY APPROVED	B	C	H	L	M	N
SPECIFICATION REFERENCE		UNIFORM STANDARD DRAWINGS CLARK COUNTY AREA						
623	TRAFFIC SIGNALS & STREETLIGHTING	SUPPLEMENTAL DRAWING						
		STREETLIGHT LOCATION L.E.D. LIGHTING STANDARDS AND GENERAL NOTES						
		DATE 07-01-14	DWG. NO.	300.S3	SHEET 1 OF 2			

NEW DRAWING

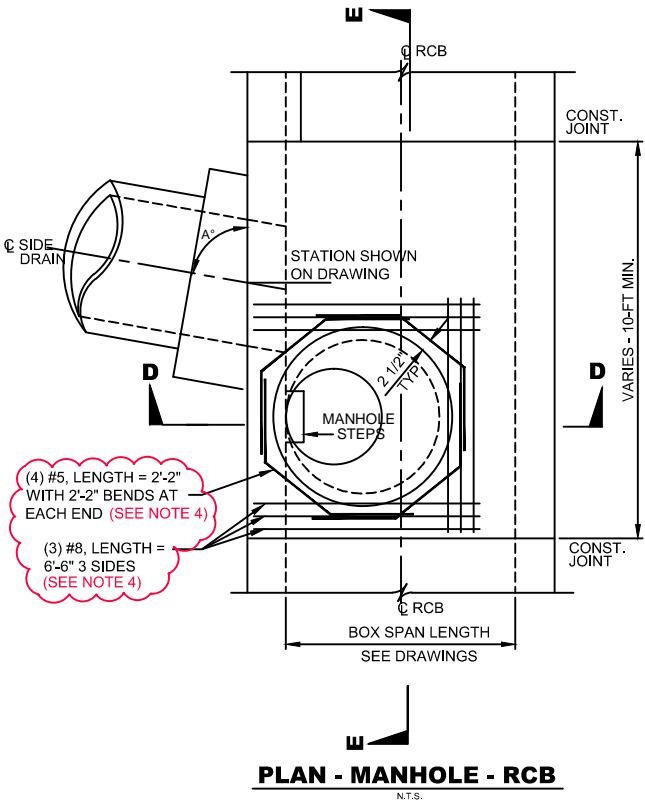
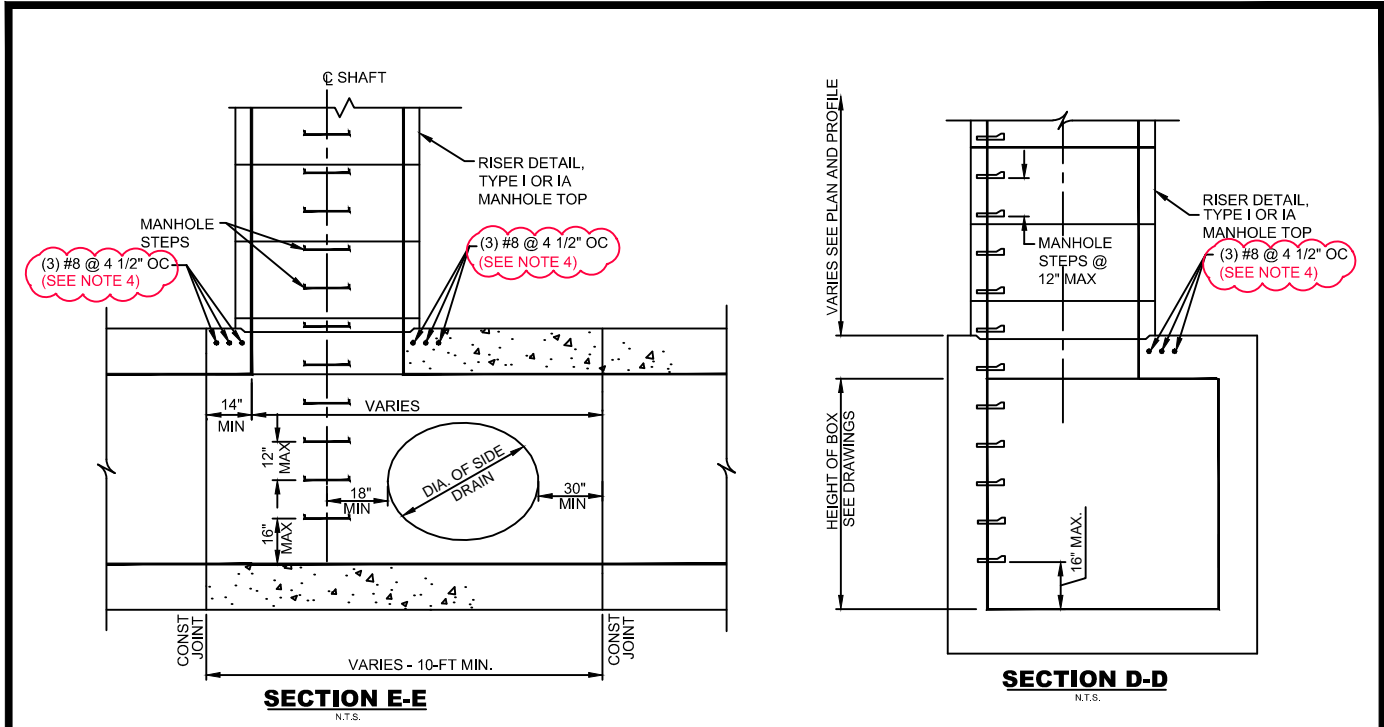
8. FOR EACH FIXTURE ASSESSED, UPON DEMONSTRATION OF THE ADEQUATE ILLUMINATION CAPABILITY THROUGH THE COMPUTER MODEL ON THE SPECIFIC ROADWAY TYPE, THE VENDOR SHALL DELIVER THE REQUESTED NUMBER OF LUMINAIRES OF THAT TYPE FOR FURTHER AGENCY EVALUATION. THEY WILL BE EVALUATED ON THE CRITERIA NOTED IN THE FOLLOWING SECTION, THOUGH THE AGENCY MAY INCLUDE ADDITIONAL REQUIREMENTS. FINAL APPROVAL AND ACCEPTANCE OF THE RESPECTIVE LUMINAIRES FOR A SPECIFIC APPLICATION SHALL BE AT THE SOLE DISCRETION OF THE PURCHASING AGENCY.
9. THE FOLLOWING LIST REPRESENTS THE CRITERIA UPON WHICH EACH LUMINAIRE SHALL BE EVALUATED. THE AGENCY MAY INCLUDE ADDITIONAL ITEMS FOR EVALUATION AT ITS SOLE DISCRETION.
- COLOR RENDERING INDEX
 - ENERGY EFFICIENCY
 - AESTHETICS
 - QUALITY OF CONSTRUCTION
 - WEATHERPROOFING
 - IP65 RATING
 - DURABILITY
 - EASE OF MAINTENANCE
 - EASE OF INSTALLATION
 - WEIGHT
 - POWER CONSUMPTION
 - COLOR TEMPERATURE (CCT)
 - LIFE OF FIXTURE AND INDIVIDUAL COMPONENTS
 - LENGTH OF WARRANTY LUMINAIRE FIXTURE, LED'S, AND BALLAST
 - INITIAL COST
 - LIFE CYCLE COST
 - LM 79, LM 80
 - BUG RATING (BACKLIGHTING, UPLIGHTING, GLARE)
 - TRANSIENT VOLTAGE SURGE SUPPRESSION - SPD (SURGE PROTECTION DEVICE)

TABLE 2

REQUIRED ILLUMINANCE VALUES FOR SIGNALIZED INTERSECTIONS							
ROADWAY CLASS	R.O.W. WIDTHS	MIN. AVE. ILLUMINANCE BY PEDESTRIAN AREA CLASSIFICATION			SIDEWALK / WALKWAY LIGHTING LEVELS		
		HIGH	MEDIUM	LOW	MIN. AVG. ILLUMINANCE	MIN. ILLUMINANCE	UNIFORMITY AVG./ MIN.
ARTERIAL / ARTERIAL	100' OR GREATER BY 100' OR GREATER BY	3.4 FC	2.6 FC	1.8 FC	2.0 FC	1.0 FC	4:1
ARTERIAL / MAJOR COLLECTOR	100' OR GREATER BY 80' OR GREATER BY	2.9 FC	2.2 FC	1.5 FC	2.0 FC	1.0 FC	4:1
ARTERIAL / MINOR COLLECTOR - RESIDENTIAL	100' OR GREATER BY 79' OR LESS	2.6 FC	2.0 FC	1.3 FC	2.0 FC	1.0 FC	4:1
MAJOR COLLECTOR / MAJOR COLLECTOR	80' - 99' BY 80' - 99'	2.4 FC	1.8 FC	1.2 FC	2.0 FC	1.0 FC	4:1
MAJOR COLLECTOR / RESIDENTIAL	80' - 99' BY 79' OR LESS	2.1 FC	1.6 FC	1.0 FC	2.0 FC	1.0 FC	4:1

		AGENCY APPROVED	B	C	H	L	M	N
SPECIFICATION REFERENCE		UNIFORM STANDARD DRAWINGS CLARK COUNTY AREA						
623	TRAFFIC SIGNALS & STREETLIGHTING	SUPPLEMENTAL DRAWING						
		STREETLIGHT LOCATION L.E.D. LIGHTING STANDARDS AND GENERAL NOTES						
		DATE 07-01-14	DWG. NO.	300.S3	SHEET 2 OF 2			

NEW DRAWING



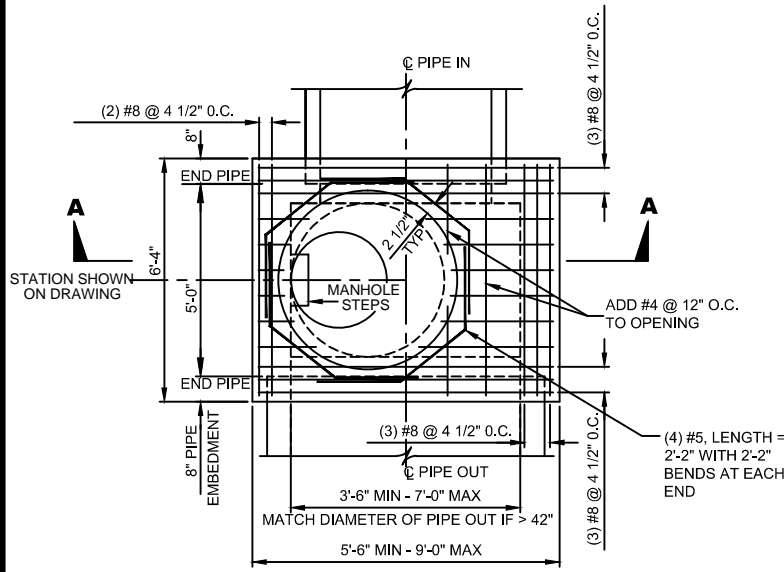
- NOTES:**
1. ALL BARS SHALL BE DEFORMED BARS CONFORMING TO ASTM-A706 GRADE 60.
 2. CONCRETE SHALL BE MADE WITH TYPE V CEMENT IN ACCORDANCE WITH ASTM C-150. MINIMUM COMPRESSIVE 28 DAY STRENGTH = 4000 psi, MAX. SLUMP = 4"
 3. CLEARANCE TO REINFORCING BARS TO BE 2 1/2" UNLESS NOTED OTHERWISE.

4. FOR PRECAST RCB, THE REINFORCING SHALL BE IN ACCORDANCE WITH MANUFACTURER DESIGN, AS APPROVED BY THE ENGINEER.

TYPE II-SD MANHOLE - RCB

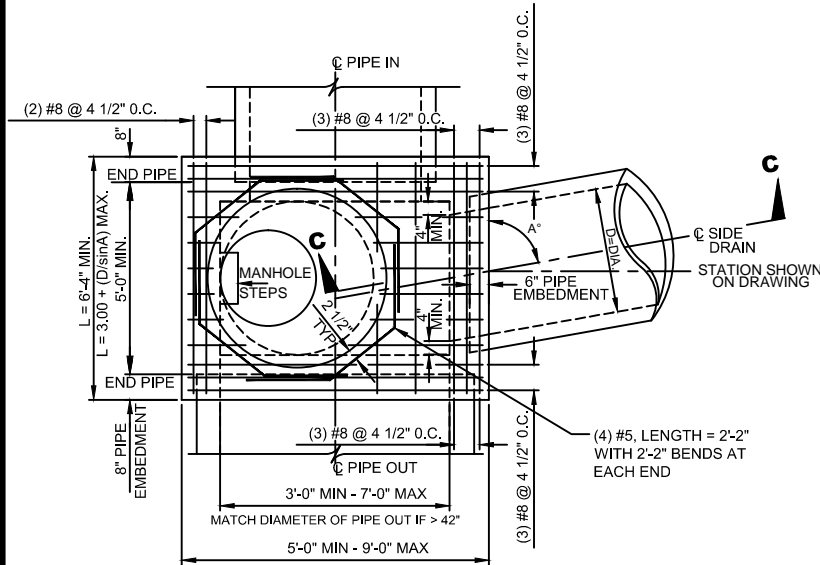
	AGENCY APPROVED	B	C	H	L	M	N
SPECIFICATION REFERENCE	UNIFORM STANDARD DRAWINGS CLARK COUNTY AREA						
	TYPE II-SD MANHOLE						
DATE	DWG. NO.	405.2	SHEET	1 OF 3			

NEW DRAWING



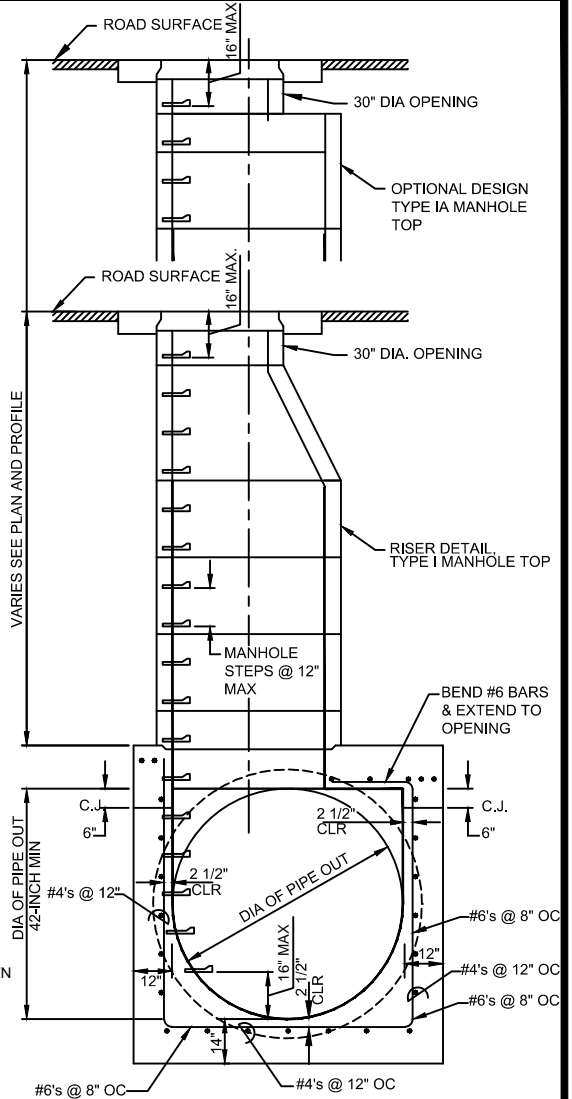
PLAN - NO SIDE DRAIN

POSITION MANHOLE ON EITHER SIDE



PLAN - SINGLE SIDE DRAIN

POSITION MANHOLE ON OPPOSITE SIDE FROM THE SIDE DRAIN



SECTION A-A

N.T.S.

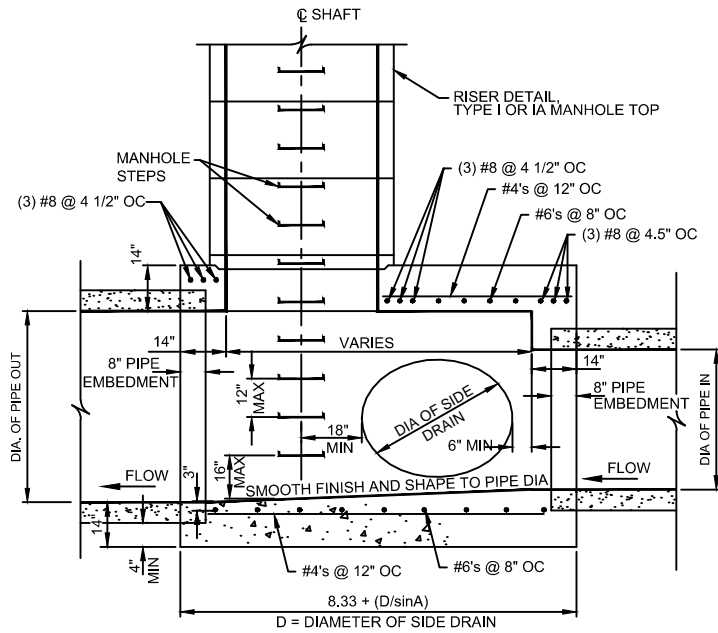
NOTES:

1. ALL BARS SHALL BE DEFORMED BARS CONFORMING TO ASTM-A706 GRADE 60.
2. CONCRETE SHALL BE MADE WITH TYPE V CEMENT IN ACCORDANCE WITH ASTM C-150. MINIMUM COMPRESSIVE 28 DAY STRENGTH = 4000 psi, MAX. SLUMP = 4"
3. CLEARANCE TO REINFORCING BARS TO BE 2 1/2" UNLESS NOTED OTHERWISE.
4. THIS DESIGN IS FOR PIPE SIZES 36-INCH TO 72-INCH. LARGER PIPE SIZES REQUIRES SPECIAL DESIGN.

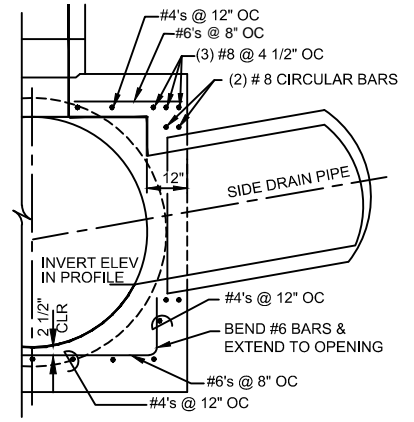
TYPE II-SD MANHOLE - PIPE

AGENCY APPROVED		B	C	H	L	M	N
UNIFORM STANDARD DRAWINGS CLARK COUNTY AREA							
TYPE II-SD MANHOLE							
DATE	DWG. NO.	405.2	SHEET	2 OF 3			

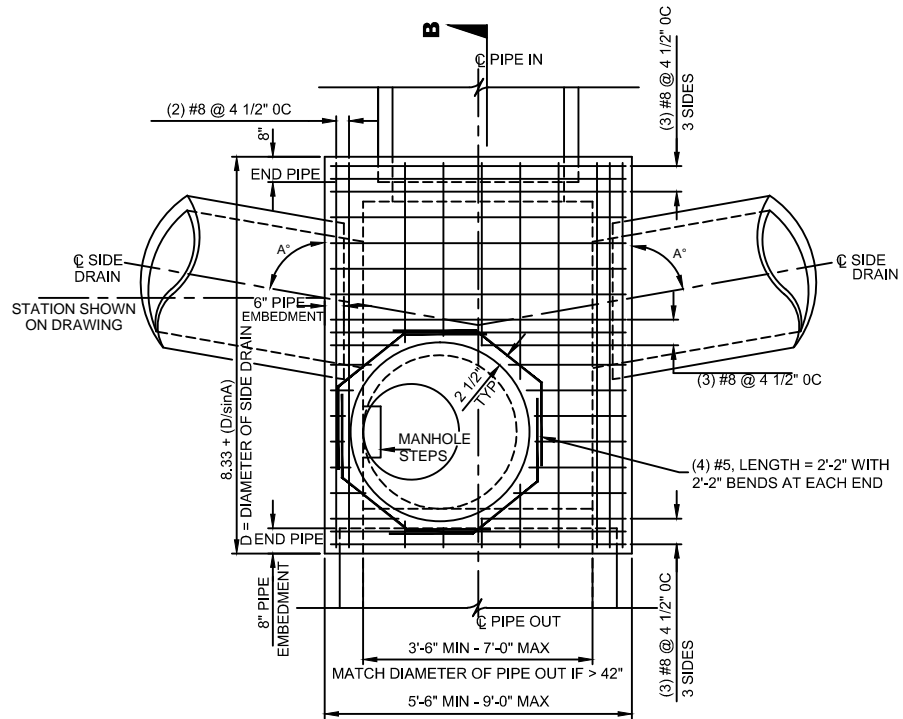
NEW DRAWING



SECTION B-B
N.T.S.



SECTION C-C
N.T.S.

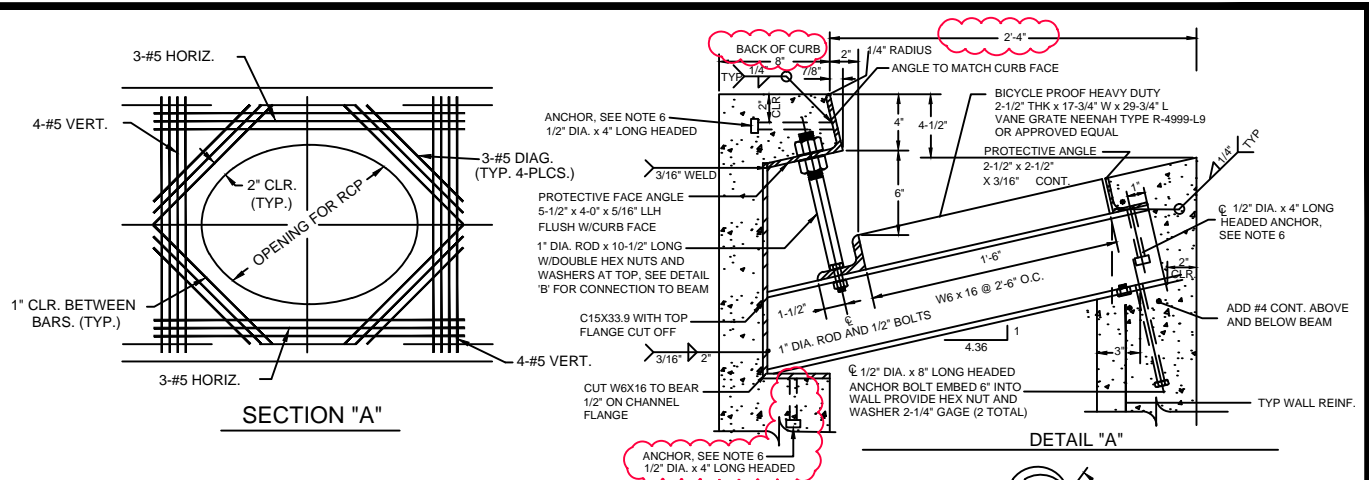


PLAN - DOUBLE SIDE DRAIN
N.T.S.

AGENCY APPROVED		B	C	H	L	M	N
UNIFORM STANDARD DRAWINGS CLARK COUNTY AREA							
TYPE II-SD MANHOLE							
DATE	DWG. NO.	405.2	SHEET	3 OF 3			

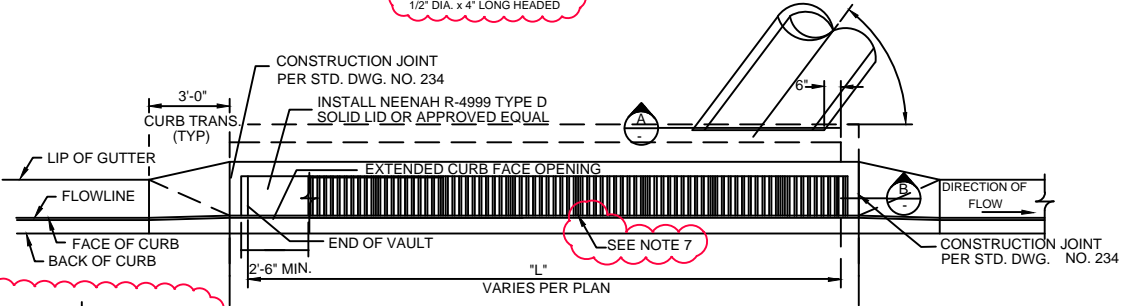
Effective 7/1/14

NEW DRAWING

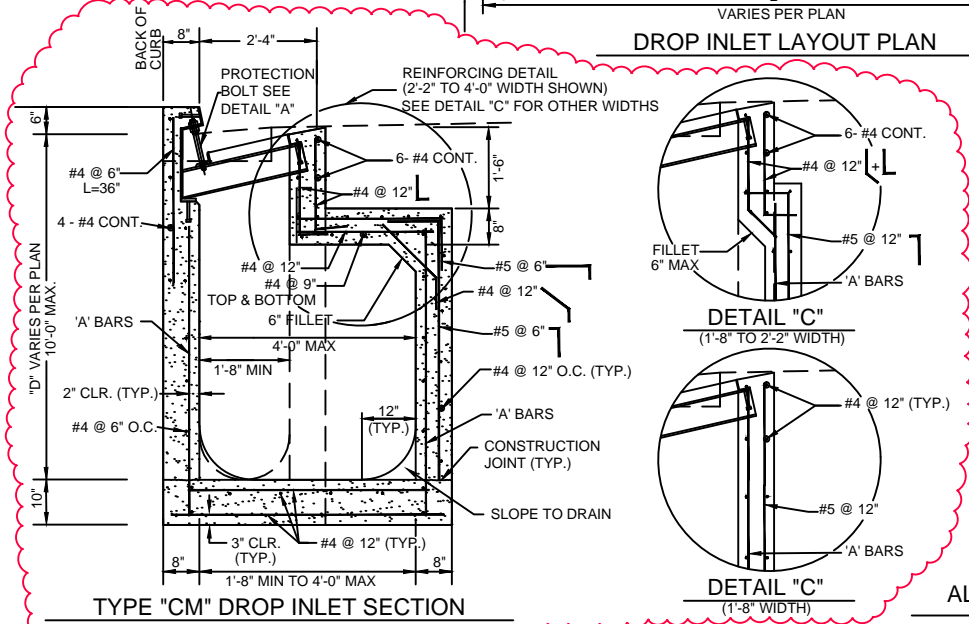


SECTION "A"

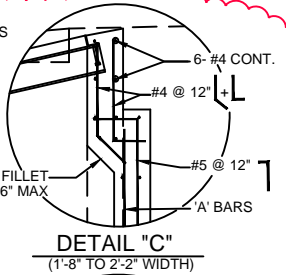
DETAIL "A"



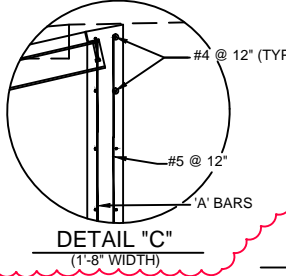
DROP INLET LAYOUT PLAN



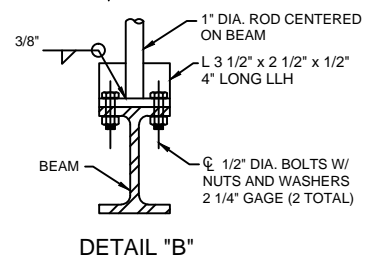
TYPE "CM" DROP INLET SECTION



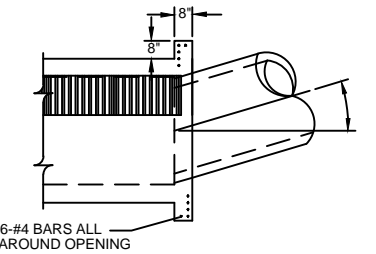
DETAIL "C"
(1-8" TO 2-2" WIDTH)



DETAIL "C"
(1-8" WIDTH)



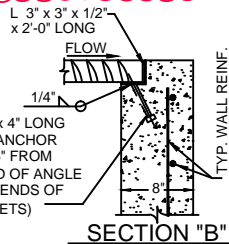
DETAIL "B"



ALTERNATE CONNECTION DETAIL

NOTES:

1. ALL EXPOSED METALS SHALL BE HOT DIP GALVANIZED AFTER FABRICATION.
2. PROVIDE 1/2" (MIN.) CLEARANCE ALL AROUND THE STEEL BEAM, DRY PACK AFTER INSTALLATION.
3. WHEN REQUIRED BY LENGTH OF OPENING, PLATE ANGLE MAY BE DELIVERED IN SECTIONS AND BUTT WELDED IN PLACE.
4. ALL GALVANIZED DAMAGED BY WELDING SHALL RECEIVE TWO COATS OF GALVALLOY OR EQUAL.
5. CONCRETE SHALL BE MODIFIED CLASS DA 4000 PSI, SEE SPECIAL PROVISIONS SECTION 501.
6. ANGLE ANCHORS SHALL BE EMBEDDED MIDPOINT IN EACH ENDWALL AND EVENLY SPACED, (MAXIMUM SPACING OF 2').
7. THE GAP BETWEEN THE GRATES MUST BE 1/2-INCH OR LESS.



SECTION "B"

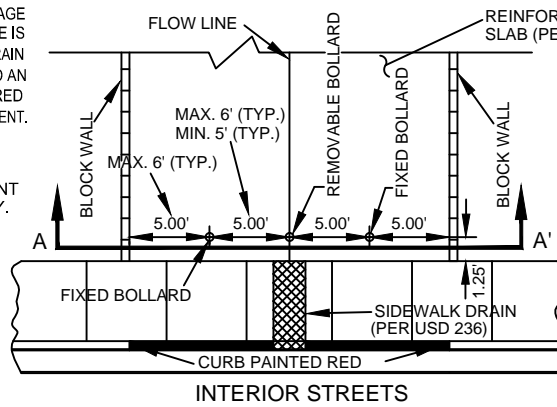
D (MAX)	DIM. 'W'	(A) BARS
4'-0"	8"	#5 @ 12" O.C.
6'-0"	8"	#5 @ 12" O.C.
8'-0"	8"	#5 @ 9" O.C.
10'-0"	8"	#5 @ 6" O.C.

SPECIFICATION REFERENCE		UNIFORM STANDARD DRAWINGS CLARK COUNTY AREA					
501	CONCRETE	TYPE "CM" DROP INLET					
501	CONCRETE STRUCTURES						
501	REINFORCING STEEL						
501	STEEL						
		DATE	09/15/13	DWG. NO.	422		

NEW DRAWING

ONE PERCENT MINIMUM SLOPE THROUGH DRAINAGE SLAB IS REQUIRED. WHERE A STORM DRAIN LINE IS AVAILABLE IN THE EXTERIOR STREET, A STORM DRAIN INLET AT THE BEGINNING OF THE EASEMENT AND AN 18-INCH MINIMUM STORM DRAIN PIPE IS REQUIRED TO CONVEY NUISANCE WATER THROUGH THE EASEMENT.

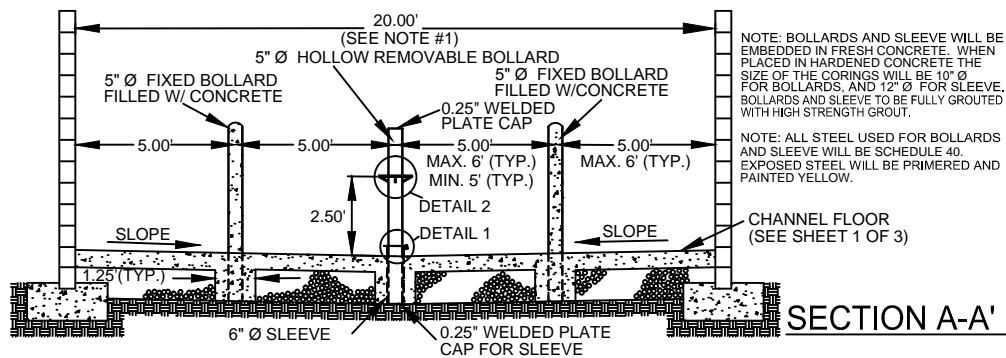
NOTE #1: 20' STANDARD WIDTH, DIFFERENT WIDTHS TO BE DESIGNED ACCORDINGLY.



GENERAL NOTE: GATE AND FENCE CONSTRUCTION IS INTENDED TO PREVENT STORAGE OF MATERIALS AND VEHICLES WITHIN CHANNEL. PREVENTION OF PEDESTRIAN USE MAY BE IMPAIRED, BUT THE DESIGN IS NOT INTENDED TO PREVENT PEDESTRIAN TRAFFIC.

BOLLARDS MAY BE USED IN LIEU OF GATE IF PEDESTRIAN ACCESS IS DESIRED.

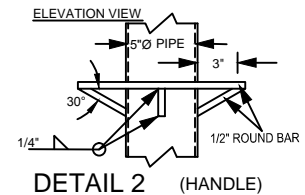
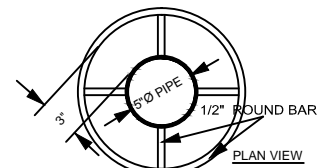
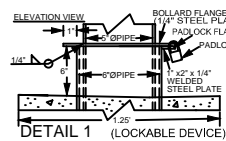
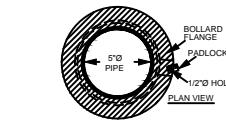
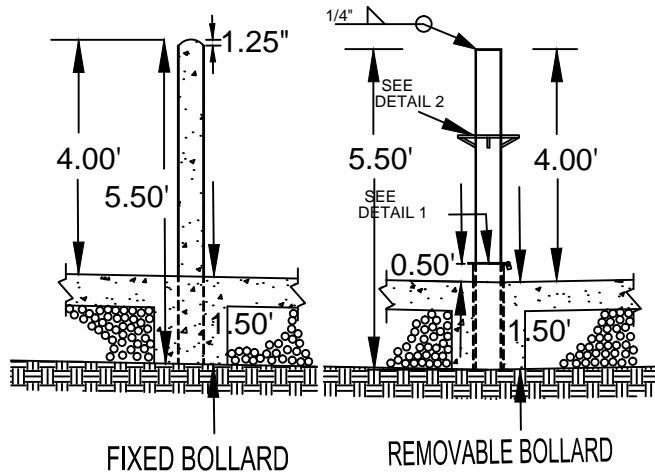
PLAN VIEW



NOTE: BOLLARDS AND SLEEVE WILL BE EMBEDDED IN FRESH CONCRETE. WHEN PLACED IN HARDENED CONCRETE THE SIZE OF THE CORINGS WILL BE 10" Ø FOR BOLLARDS, AND 12" Ø FOR SLEEVE. BOLLARDS AND SLEEVE TO BE FULLY GROUTED WITH HIGH STRENGTH GROUT.

NOTE: ALL STEEL USED FOR BOLLARDS AND SLEEVE WILL BE SCHEDULE 40. EXPOSED STEEL WILL BE PRIMERED AND PAINTED YELLOW.

SECTION A-A'

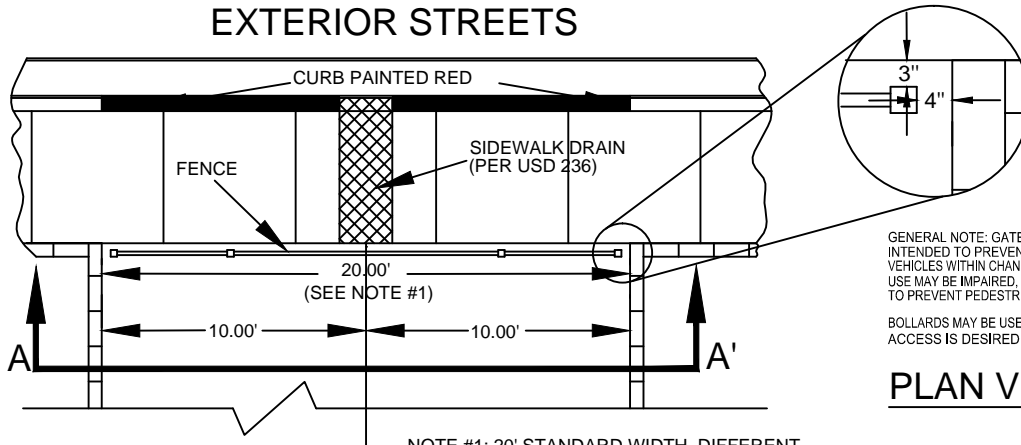


NOT FOR USE IN EMERGENCY ACCESS

AGENCY APPROVED				L
UNIFORM STANDARD DRAWINGS CLARK COUNTY AREA				
SUPPLEMENTAL DRAWING				
THROUGH-LOT DRAIN				
DATE	01/01/14	DWG. NO.	425.S1	SHEET 2 OF 3

NEW DRAWING

EXTERIOR STREETS

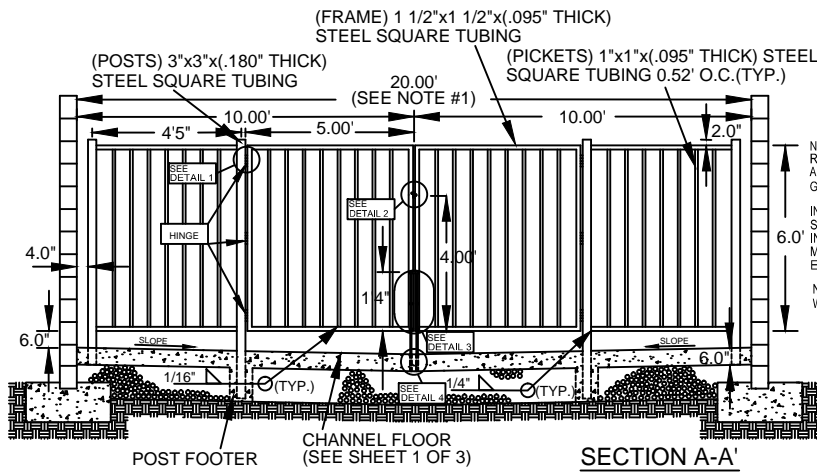


GENERAL NOTE: GATE AND FENCE CONSTRUCTION IS INTENDED TO PREVENT STORAGE OF MATERIALS AND VEHICLES WITHIN CHANNEL. PREVENTION OF PEDESTRIAN USE MAY BE IMPAIRED, BUT THE DESIGN IS NOT INTENDED TO PREVENT PEDESTRIAN TRAFFIC.

BOLLARDS MAY BE USED IN LIEU OF GATE IF PEDESTRIAN ACCESS IS DESIRED.

PLAN VIEW

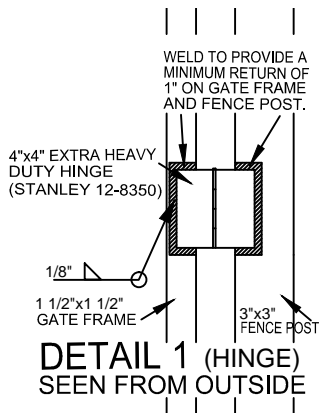
NOTE #1: 20' STANDARD WIDTH, DIFFERENT WIDTHS TO BE DESIGNED ACCORDINGLY.



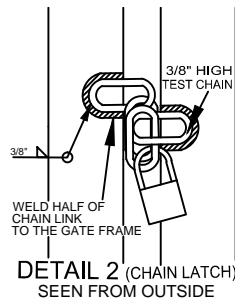
NOTE: POSTS PLACED IN HARDENED CONCRETE REQUIRE AN 8"Ø CORING THROUGH THE SLAB AND BASE FULLY GROUTED WITH HIGH STRENGTH GROUT.

INTERIOR POSTS POURED MONOLITHIC WITH THE SLAB SHALL BE EMBEDDED A MINIMUM OF 18" INTO A 24"X24" FOOTER. END POSTS POURED MONOLITHIC WITH THE SLAB SHALL HAVE FULL EMBEDMENT IN THE SLAB.

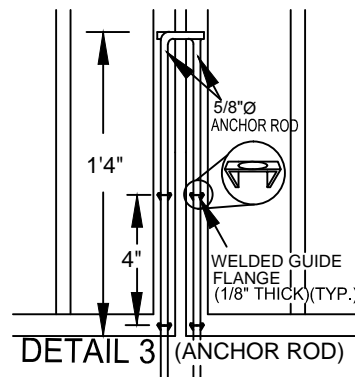
NOTE: STEEL WILL BE PRIMERED AND PAINTED WHITE UNLESS OTHERWISE SPECIFIED.



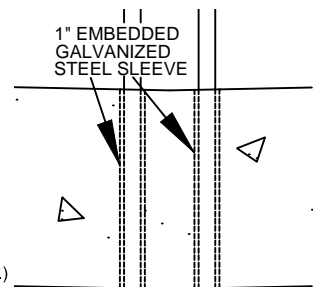
DETAIL 1 (HINGE)
SEEN FROM OUTSIDE



DETAIL 2 (CHAIN LATCH)
SEEN FROM OUTSIDE



DETAIL 3 (ANCHOR ROD)



DETAIL 4 (SLEEVE)

NOT FOR USE IN EMERGENCY ACCESS

AGENCY APPROVED

SPECIFICATION REFERENCE

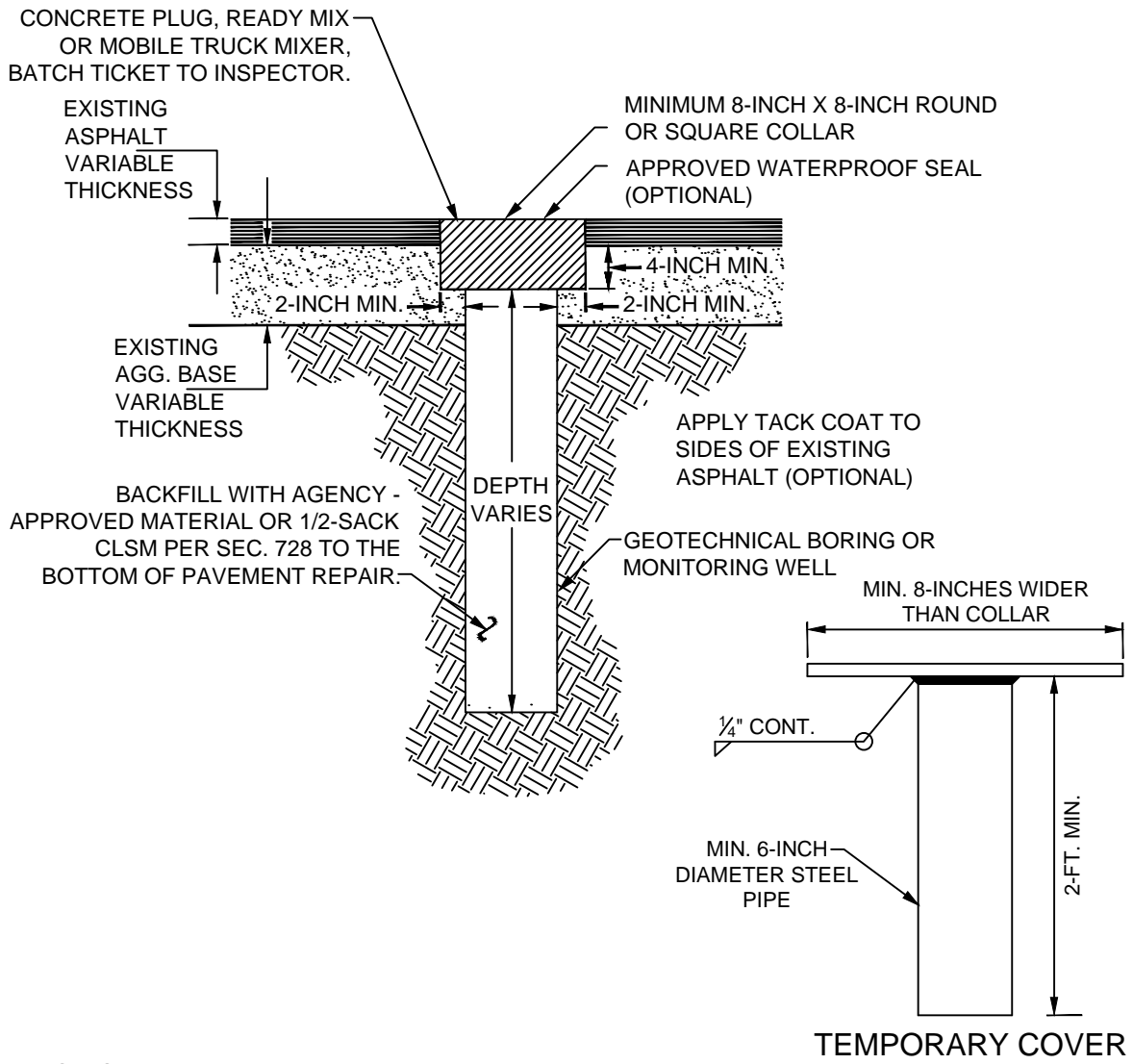
UNIFORM STANDARD DRAWINGS
CLARK COUNTY AREA

SUPPLEMENTAL DRAWING

THROUGH-LOT DRAIN

DATE 01/01/14 DWG. NO. 425.S1 SHEET 3 OF 3

NEW DRAWING

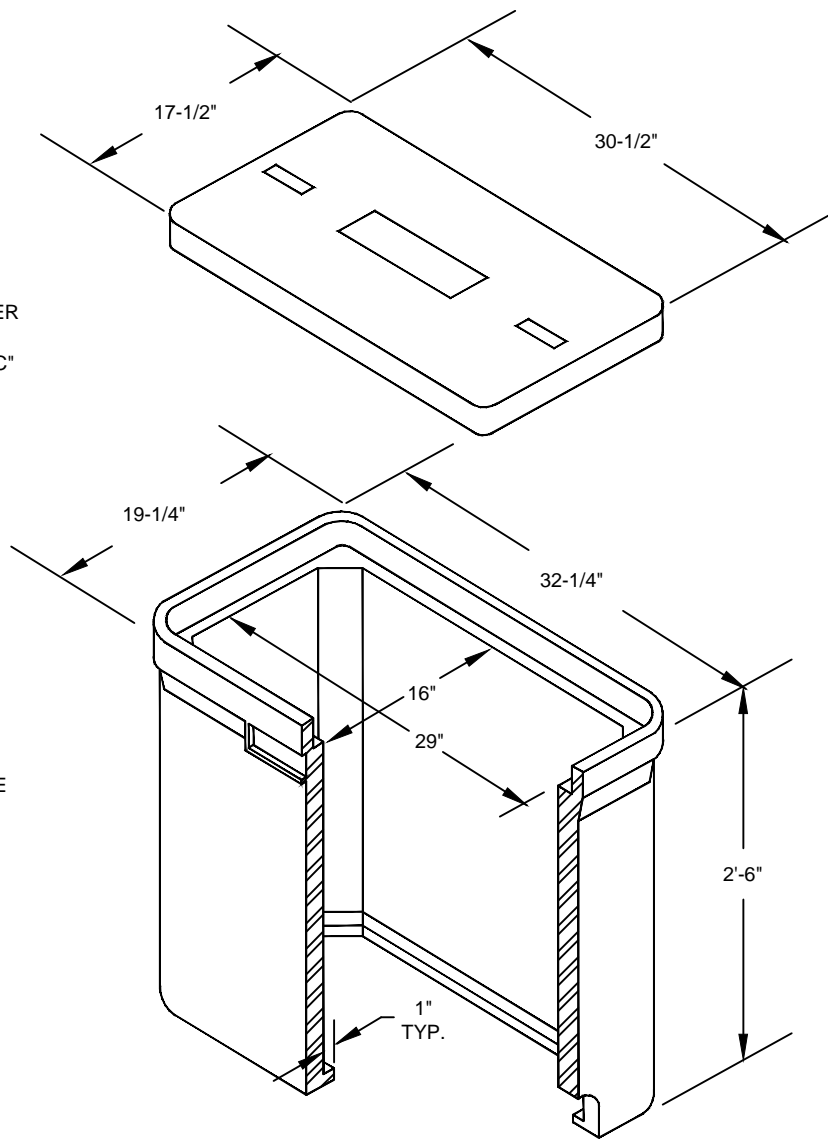


NOTES:

1. CALL AND SCHEDULE INSPECTION TO OBSERVE CONCRETE PLUG AFTER PLACEMENT.
2. PERMIT TYPICALLY VALID FOR 30 DAYS - EXTENSION OF PERMIT IS REQUIRED PRIOR TO EXPIRATION IF WORK IS NOT COMPLETE.
3. FOR BORINGS GREATER THAN 12-INCHES IN DIAMETER, SUBMIT PERMANENT PATCHING PLAN WITH PERMIT APPLICATION.
4. IF GROUNDWATER IS ENCOUNTERED FOLLOW APPROPRIATE AGENCY REQUIREMENTS.
5. THE CONNECTION OF THE PIPE AND FLAT PLATE SHALL BE CONTINUOUSLY WELDED ALL OF THE WAY AROUND. THE SIZE OF THE WIRE SHALL BE 0.35 WIRE (ER70S-6) OR 7018 ROD, AND THE WELDER SHALL HAVE A W.S. CERTIFICATION IN FLAT PLATE.

		AGENCY APPROVED		C			
SPECIFICATION REFERENCE		UNIFORM STANDARD DRAWINGS CLARK COUNTY AREA					
208	TRENCH EXCAVATION AND BACKFILL	SUPPLEMENTAL DRAWING					
		METHOD FOR GEOTECHNICAL BORING AND MONITORING WELL BACKFILL AND PATCH FOR BORINGS 12-INCHES OR LESS IN DIAMETER					
		DATE 07-01-14	DWG. NO.	507.S1			

NEW DRAWING



REINFORCED POLYMER
CONCRETE COVER
MARKED "FIBER OPTIC"

POLYMER COMPOSITE
BODY

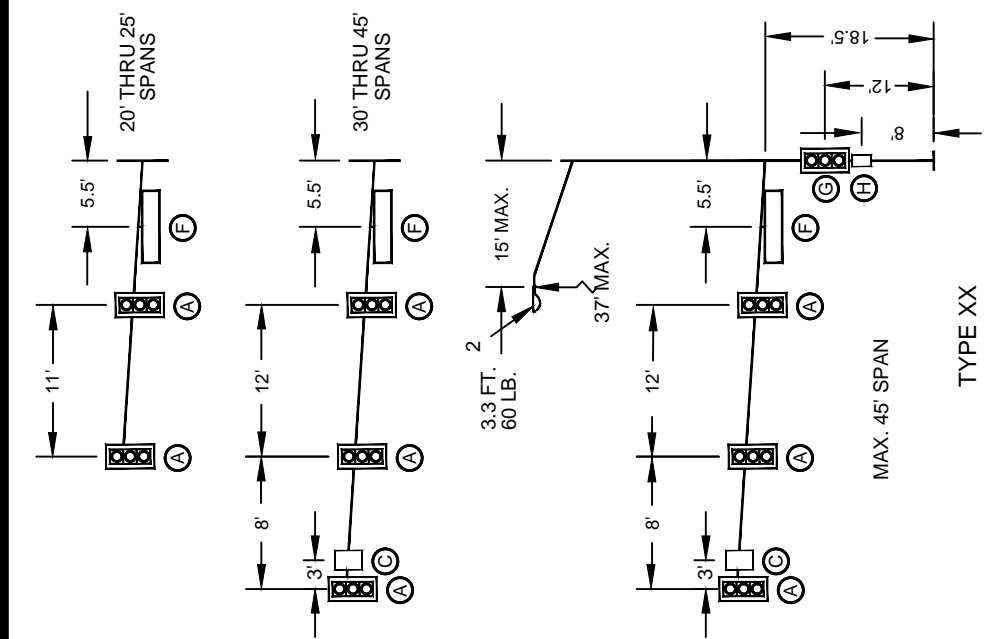
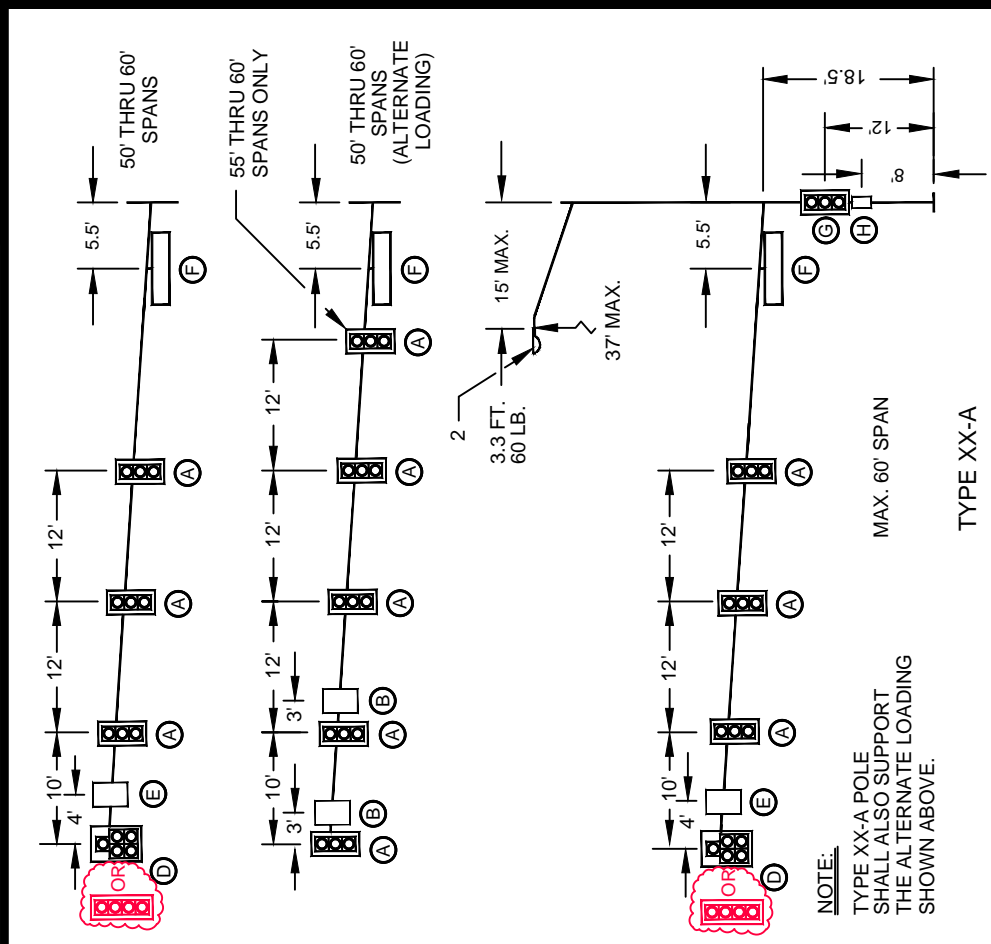
NOTES:

1. THIS PULL BOX SHALL NOT BE USED IN TRAVEL OR PARKING LANES

2. TAPERED SIDE WALLS ARE ALLOWED.

AGENCY APPROVED	B	C	H	L	M	N
UNIFORM STANDARD DRAWINGS CLARK COUNTY AREA						
"P30" PULLBOX (FOR USE IN INTERCONNECT AND COMMUNICATIONS INSTALLATIONS)						
DATE	3-13-03	DWG. NO.	761			

SPECIFICATION REFERENCE	



DESIGN CRITERIA:
 1985 2001 AASHTO STANDARD SPECIFICATIONS FOR STRUCTURAL SUPPORTS FOR HIGHWAY SIGNS, LUMINAIRES AND TRAFFIC SIGNALS.
 MAXIMUM DESIGN MINIMUM YIELD STRENGTH FOR TUBULAR MEMBERS SHALL BE LIMITED TO 48,000 PSI FOR COLD WORKED MATERIALS AND 50,000 PSI FOR NON-COLD WORKED MATERIALS.
 WIND VELOCITY: **66-90 MPH ISOTACH.**

DEVICE	DESCRIPTION	PROJ. AREA (FT ²)	WEIGHT (LBS)
(A) SIGNAL	12"- 3 SEC. W/ BACKPLATES (M-2)	9.80	40
(B) SIGN	R3-5 24" X 30"	5.00	15
(C) SIGN	R3-4 24" X 24"	4.00	10
(D) SIGNAL	12"- 4 OR 5 SEC. W/ BACKPLATES (M-4 OR M-5)	13.68	80
(E) SIGN	R10-5x12 OR R10-12E 360" X 4536"	11.25	30
(F) SIGN	STREET NAME-FREE SWINGING-1.68' X 8'	13.44	100
(G) SIGNAL	DUAL-12"- 3 SEC. W/ BACKPLATES	17.34	80
(H) SIGNAL	DUAL-PEDESTRIAN	8.00	60

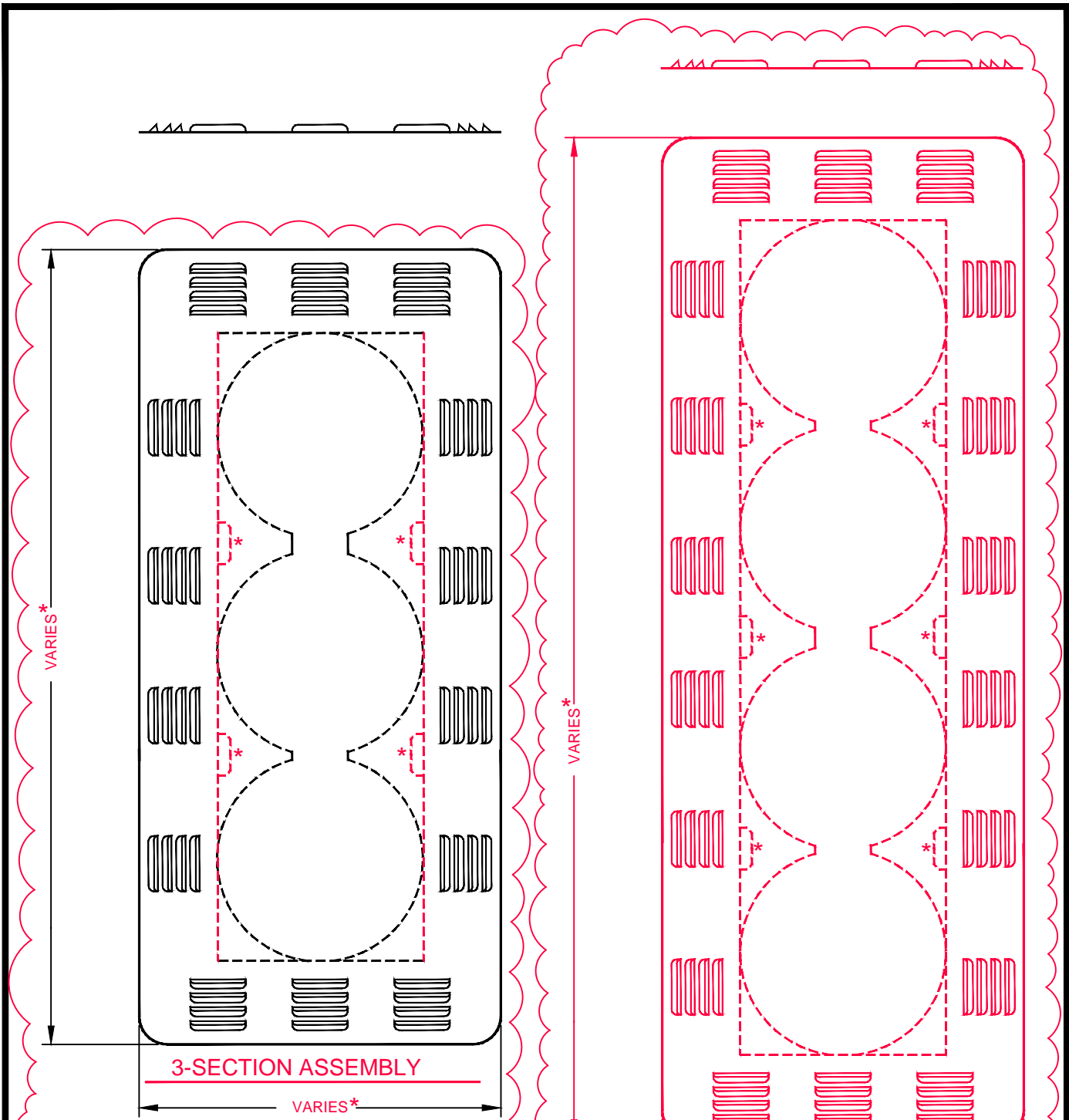
SPECIFICATION REFERENCE	

AGENCY APPROVED	B	C	H	L	M	N
-----------------	---	---	---	---	---	---

UNIFORM STANDARD DRAWINGS
CLARK COUNTY AREA

LOADING INFORMATION	
DATE	7-8-93
DWG. NO.	808
SHEET	5 OF 6

LOADING INFORMATION

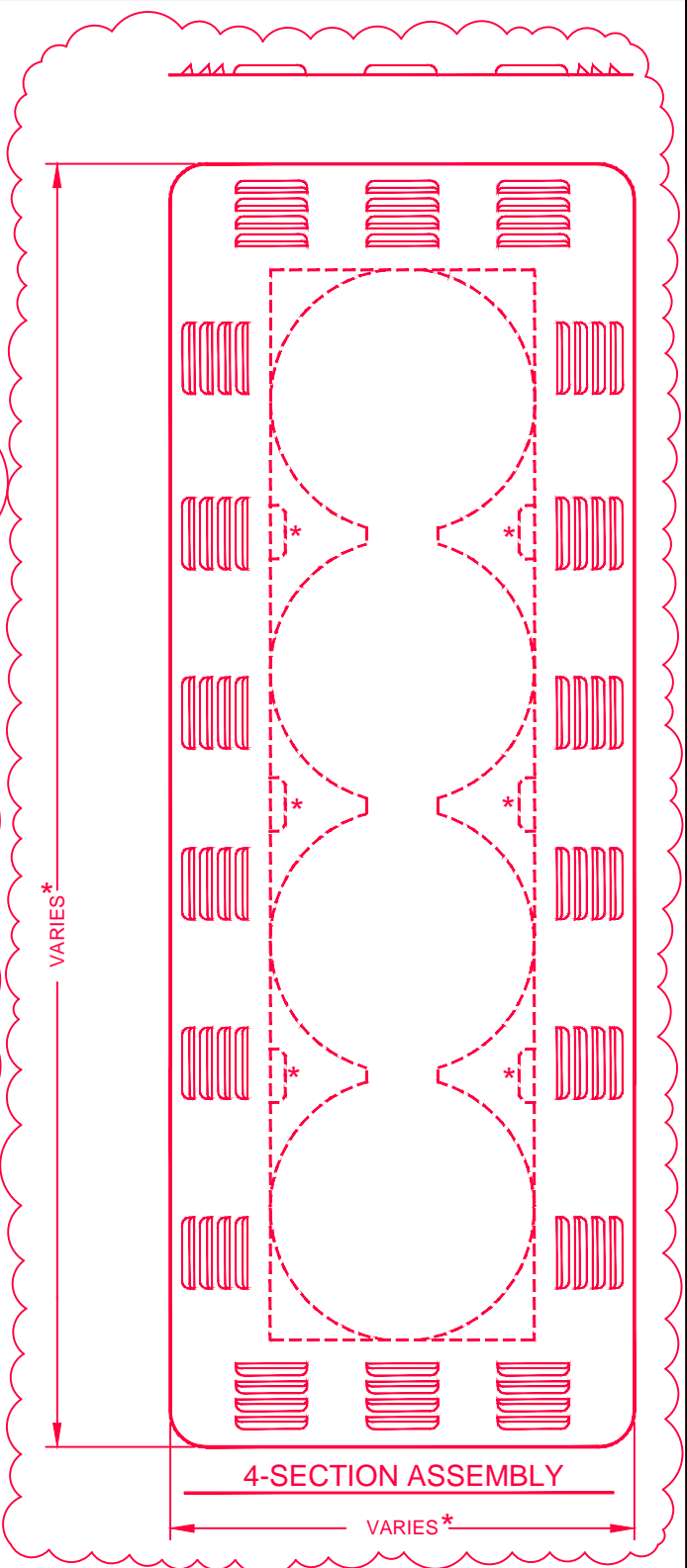
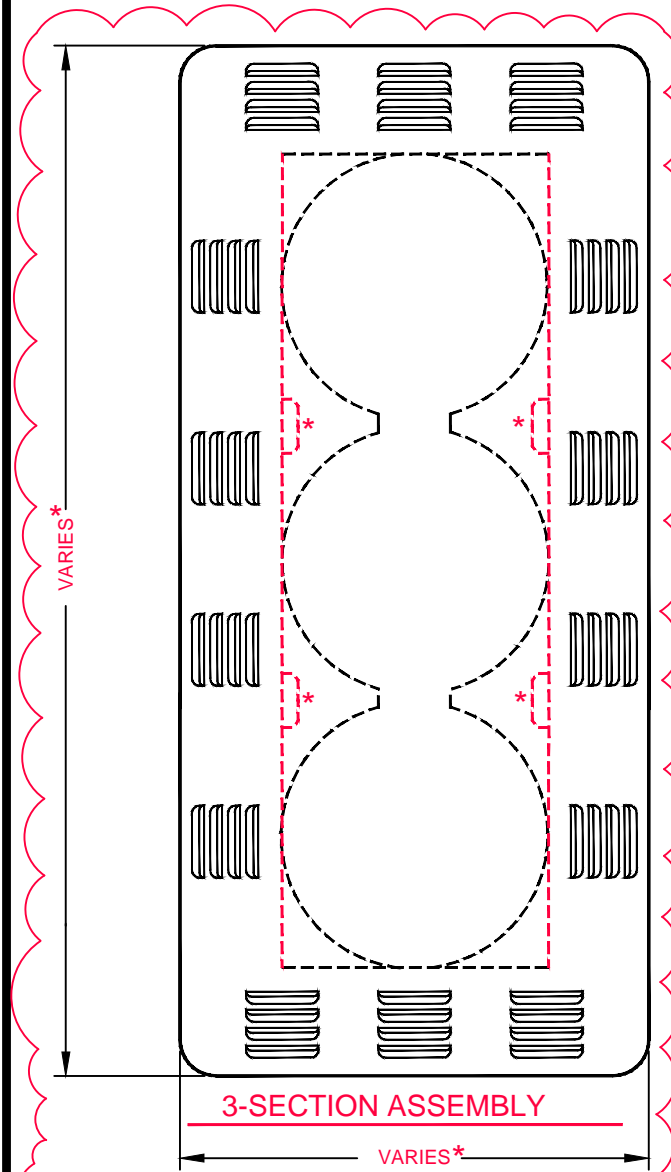
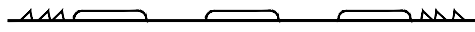


PAINT: FLAT BLACK
~~SHOWN 3 SECTION, 12" SIGNAL HEAD WITH~~
~~ELEVATOR PLUMBIZER~~
 * DIMENSIONS AND ATTACHMENT METHODS
 VARY PER MANUFACTURE.
 BORDER WIDTH: 5-INCH

AGENCY APPROVED	B	C	H	L	M	N
-----------------	---	---	---	---	---	---

SPECIFICATION REFERENCE	

UNIFORM STANDARD DRAWINGS CLARK COUNTY AREA		
LOUVERED BACKPLATE FOR MAST ARM MOUNTED SIGNAL		
DATE	DWG. NO.	840

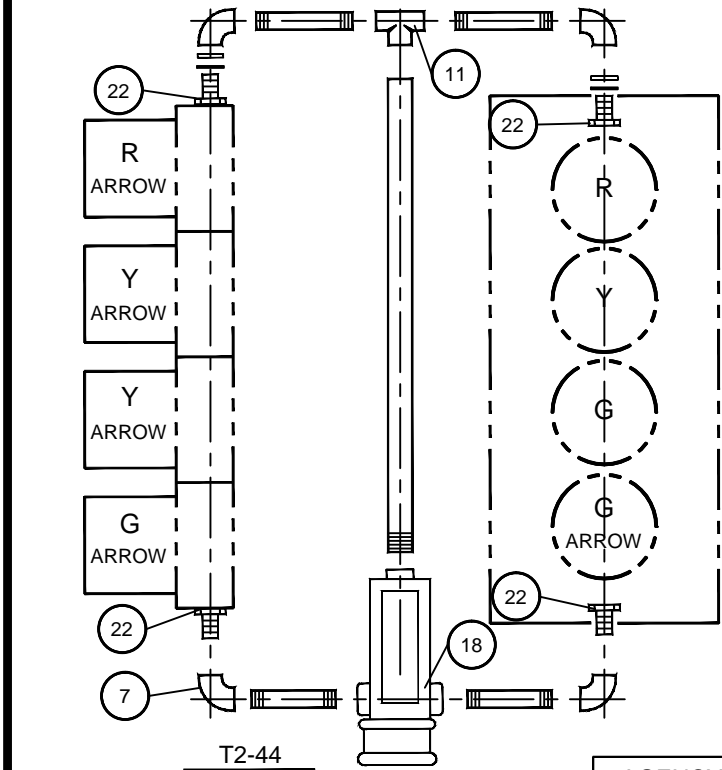
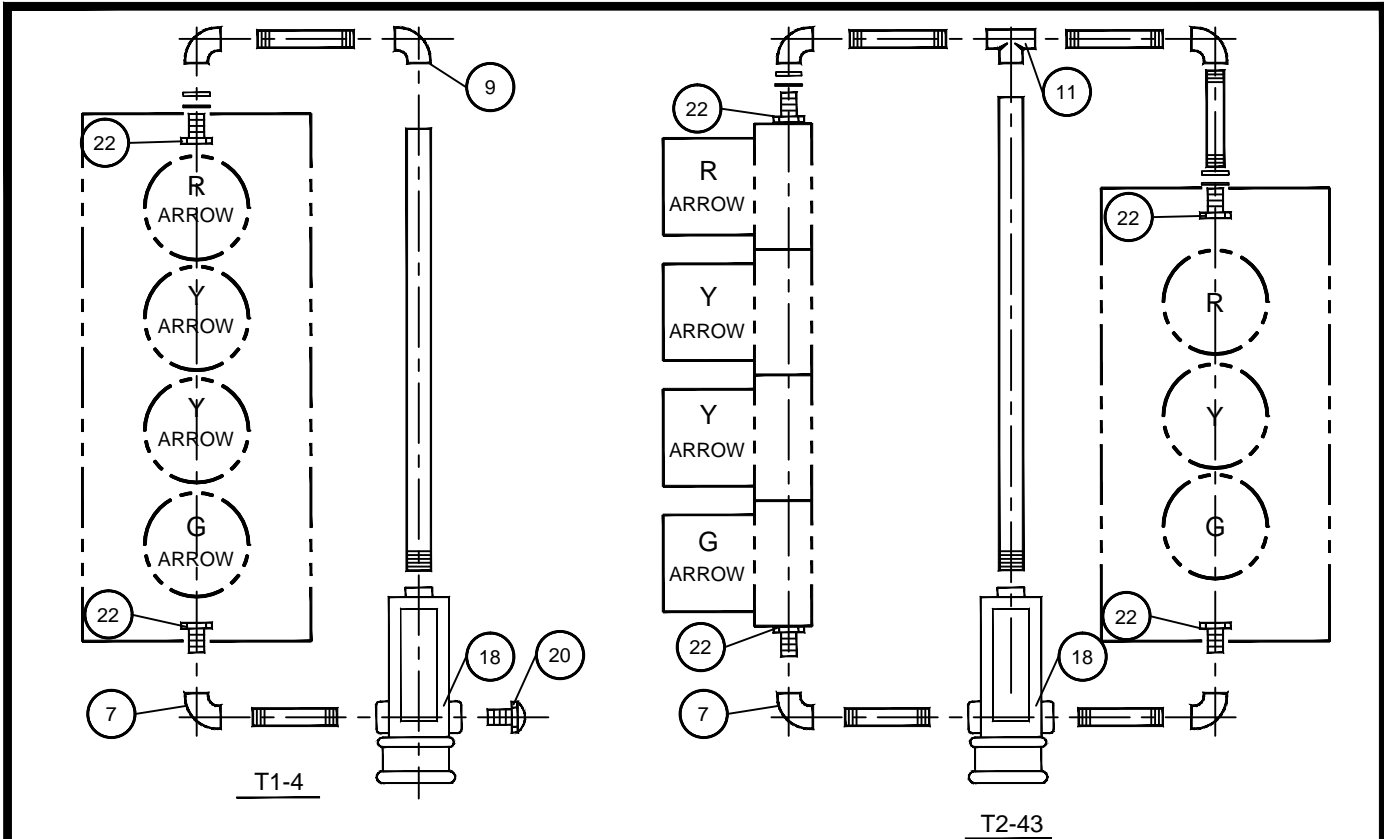


PAINT: FLAT BLACK
~~SHOWN 3 SECTION, 12" SIGNAL HEAD WITH~~
~~ELEVATOR PLUMBIZER~~
 * DIMENSIONS AND ATTACHMENT METHODS
 VARY PER MANUFACTURE.
 BORDER WIDTH: 5-INCH

AGENCY APPROVED	B	C	H	L	M	N
-----------------	---	---	---	---	---	---

SPECIFICATION REFERENCE	

UNIFORM STANDARD DRAWINGS CLARK COUNTY AREA	
LOUVERED BACKPLATE FOR POLE MOUNTED SIGNAL	
DATE	DWG. NO. 841



NOTES:

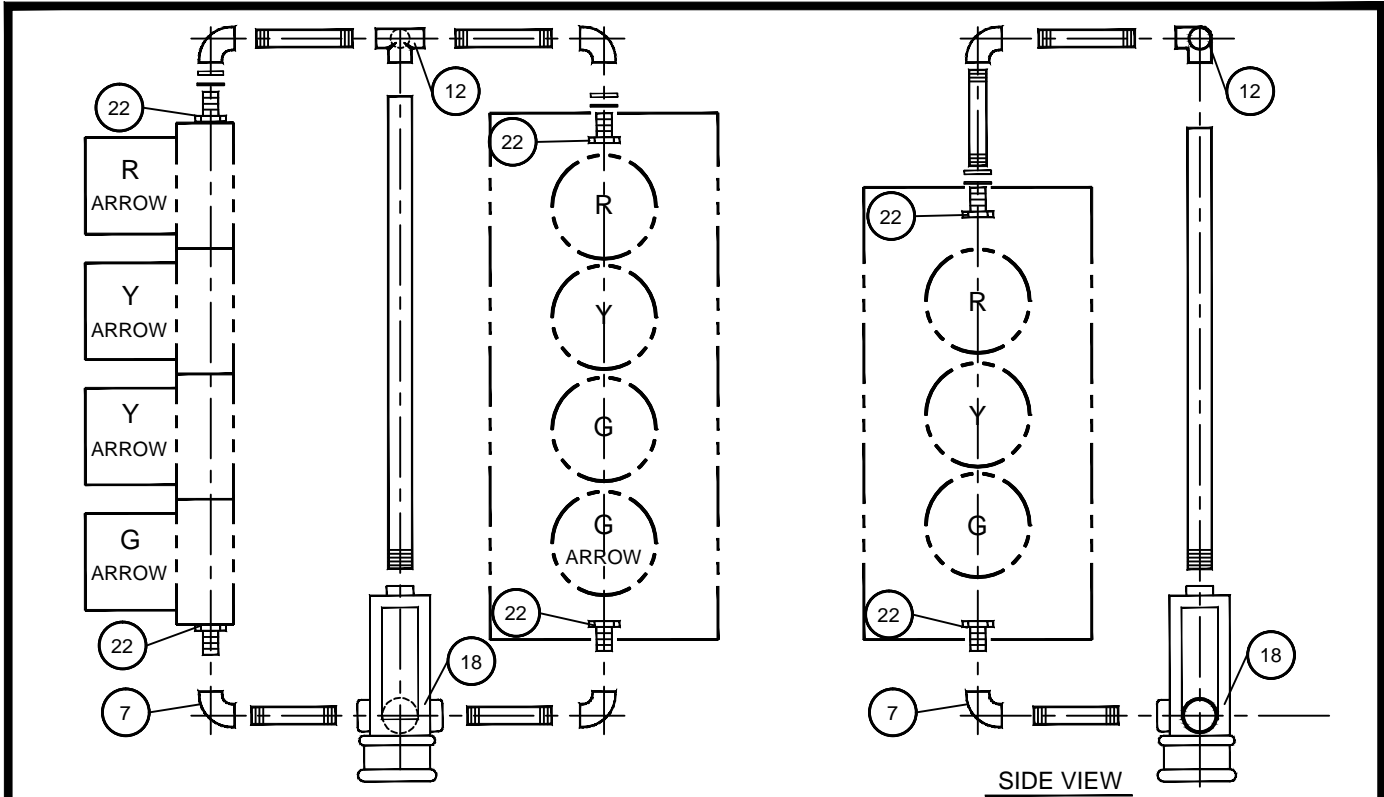
1. ALL SIGNALS ARE 12" NOMINAL (CLASS).
2. FOR ITEMIZED PARTS, SEE DRAWING NO. 845.
3. FOR ARROW LENS SEE DRAWING NO. 890.

AGENCY APPROVED		B	C	H	L	M	N
UNIFORM STANDARD DRAWINGS CLARK COUNTY AREA							
SIGNAL ASSEMBLIES POST TOP MOUNT							
DATE	DWG. NO.	843	SHEET		1 OF 2		

SPECIFICATION REFERENCE	

NEW DRAWING

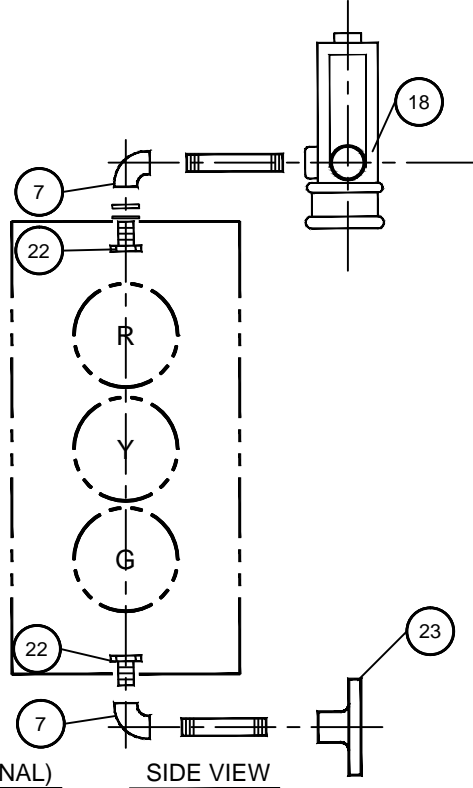
Effective 7/1/14



T3-443

NOTES:

1. ALL SIGNALS ARE 12" NOMINAL ~~(CLASS)~~.
2. FOR ITEMIZED PARTS, SEE DRAWING NO. 845.
3. FOR ARROW LENS SEE DRAWING NO. 890.

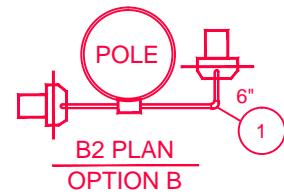
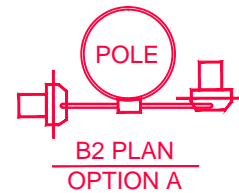
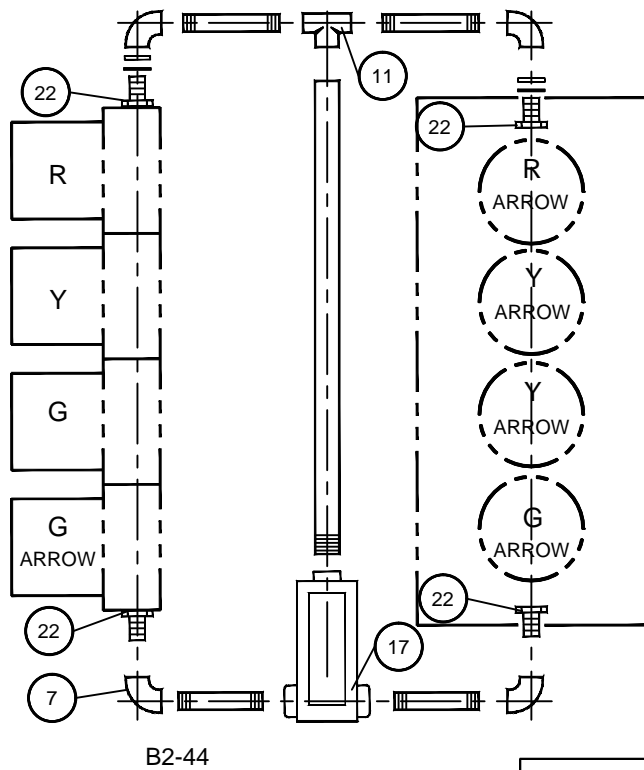
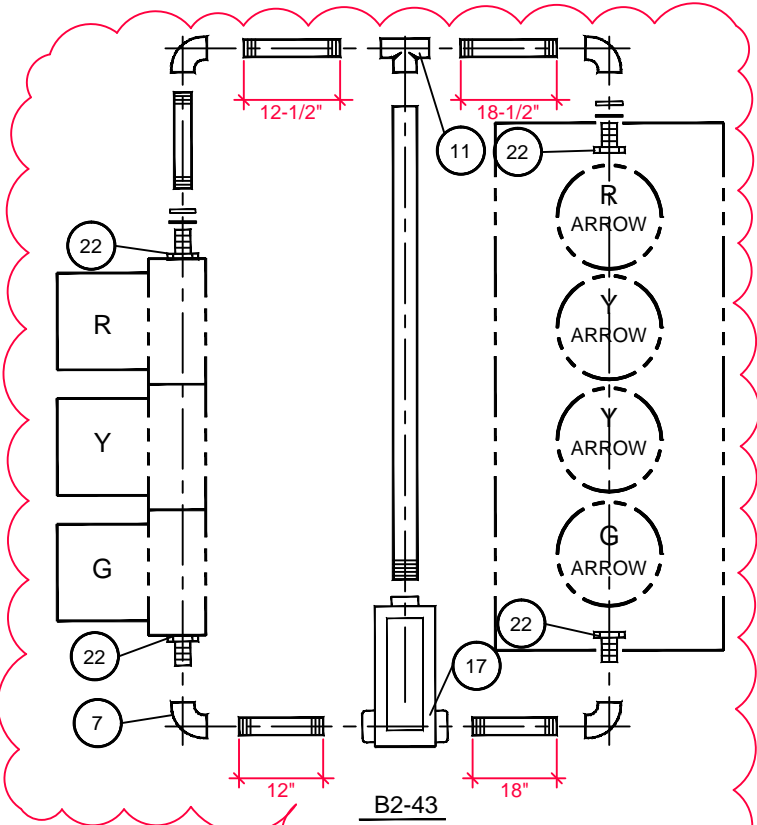
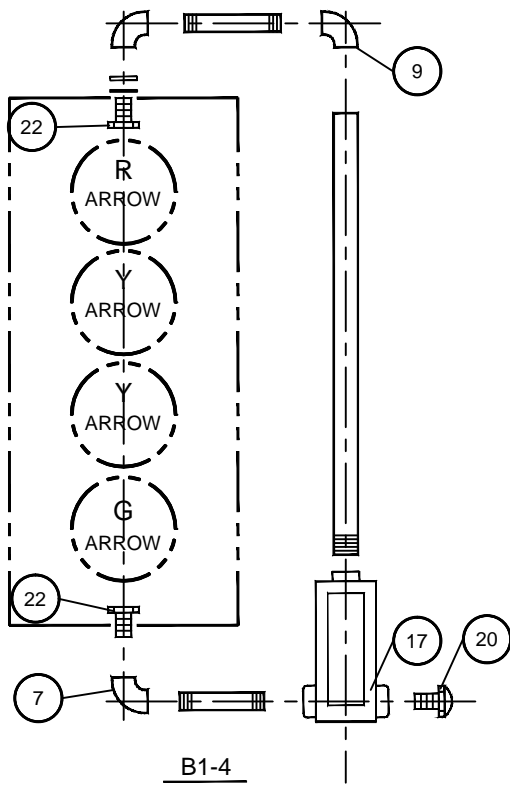


T3-443B (OPTIONAL)

SIDE VIEW

AGENCY APPROVED						B	C	H	L	M	N
SPECIFICATION REFERENCE						UNIFORM STANDARD DRAWINGS CLARK COUNTY AREA					
						SIGNAL ASSEMBLIES POST TOP MOUNT					
DATE			DWG. NO. 843			SHEET 2 OF 2					

NEW DRAWING



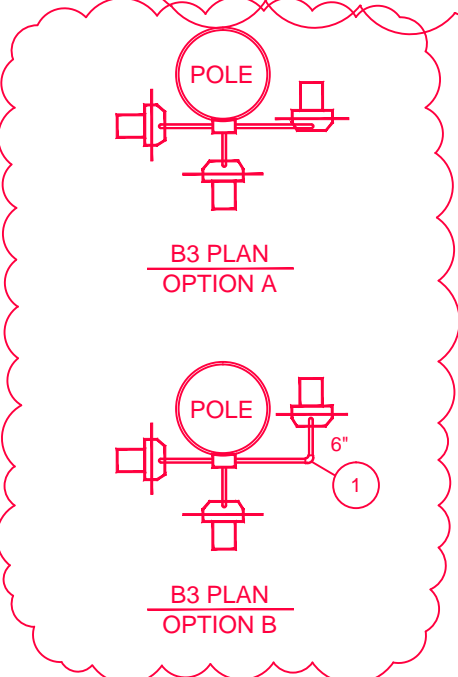
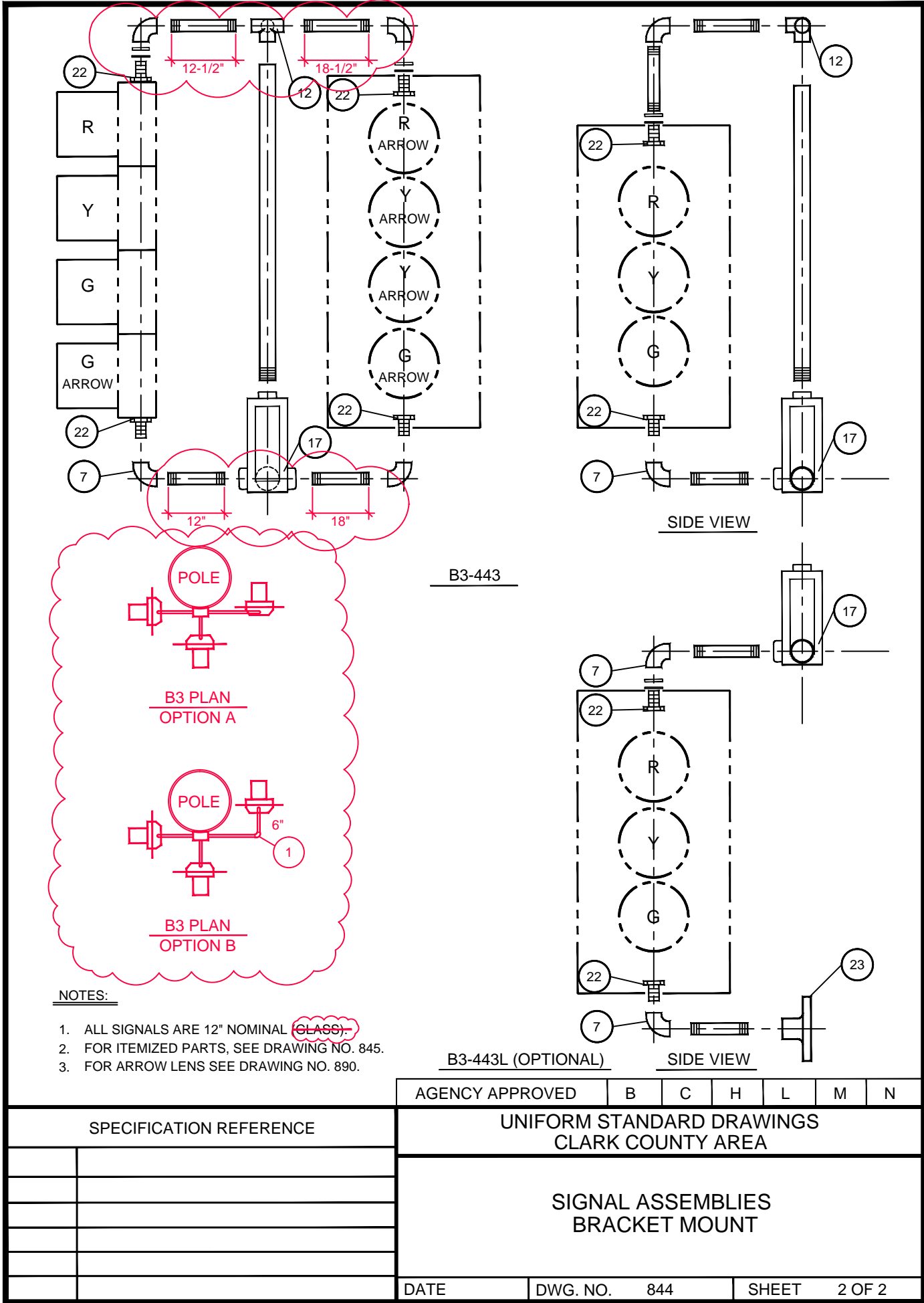
NOTES:

1. ALL SIGNALS ARE 12" NOMINAL (GLASS).
2. FOR ITEMIZED PARTS, SEE DRAWING NO. 845.
3. FOR ARROW LENS SEE DRAWING NO. 890.

AGENCY APPROVED	B	C	H	L	M	N
UNIFORM STANDARD DRAWINGS CLARK COUNTY AREA						
SIGNAL ASSEMBLIES BRACKET MOUNT						
DATE	DWG. NO.	844	SHEET	1 OF 2		

SPECIFICATION REFERENCE	

NEW DRAWING



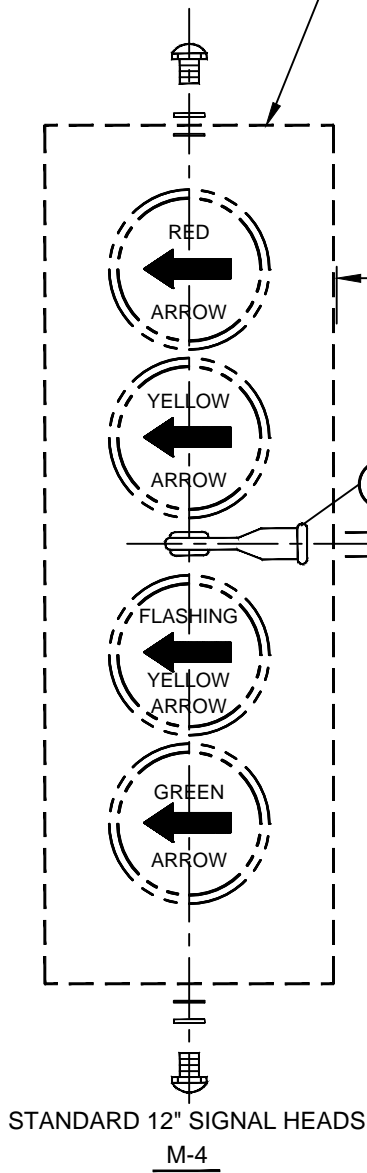
- NOTES:**
1. ALL SIGNALS ARE 12" NOMINAL ~~(CLASS)~~.
 2. FOR ITEMIZED PARTS, SEE DRAWING NO. 845.
 3. FOR ARROW LENS SEE DRAWING NO. 890.

AGENCY APPROVED						B	C	H	L	M	N
UNIFORM STANDARD DRAWINGS CLARK COUNTY AREA											
SIGNAL ASSEMBLIES BRACKET MOUNT											
DATE	DWG. NO. 844			SHEET 2 OF 2							

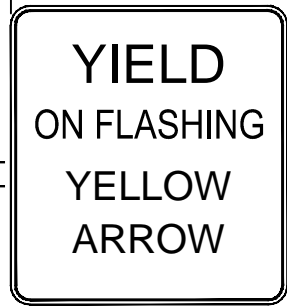
NEW DRAWING

Effective 7/1/14

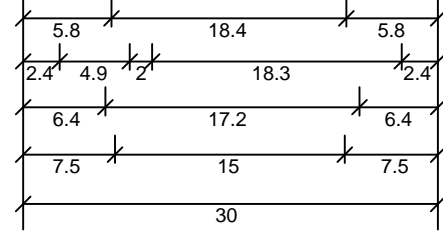
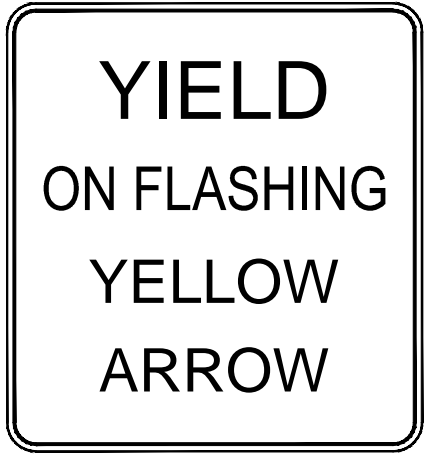
PROVIDE LOUVERED BACKPLATE
SIMILAR TO DRAWING 840



STANDARD 12" SIGNAL HEADS
M-4



R10-12F
30" X 36"
MIN.



1.9" Radius, 0.8" Border, 0.5" Indent,
Black on White
[YIELD] D;
[ON FLASHING] C 50% spacing
[YELLOW] C; [ARROW] C;

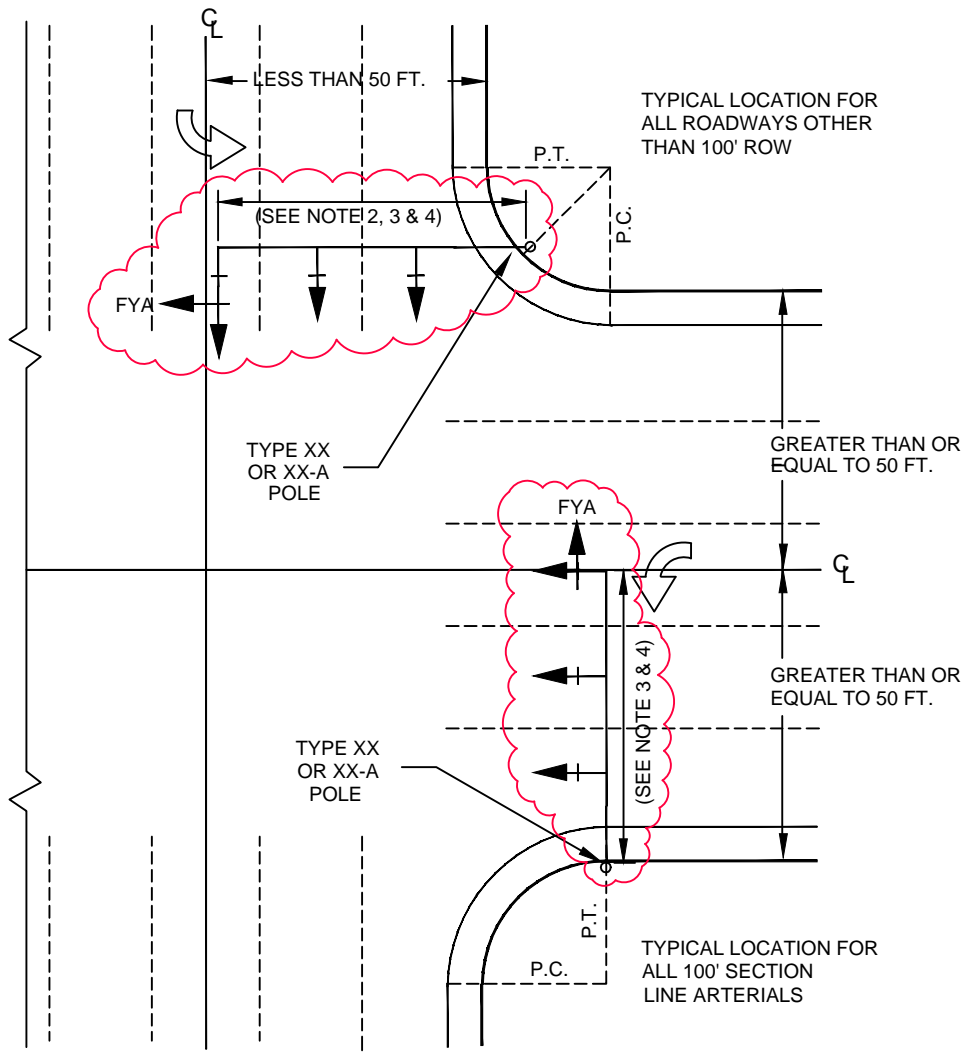
NOTES:

1. ALL SIGNALS ARE 12" NOMINAL.
2. FOR ITEMIZED PARTS, SEE DRAWING 845.

AGENCY APPROVED	B	C	H	L	M	N
UNIFORM STANDARD DRAWINGS CLARK COUNTY AREA						
PROTECTED PERMISSIVE MAST ARM SIGNAL ASSEMBLY TYPE M-4						
DATE	DWG. NO. 857					

SPECIFICATION REFERENCE	

NEW DRAWING



NOTES:

1. FOUNDATIONS WILL BE 36" SQUARE OR ROUND AND 12 FT. DEEP. THE AREA SHALL REMAIN ACCESSIBLE FOR THESE FOUNDATIONS.
2. TRAFFIC SIGNAL POLES SHALL REMAIN AT THE MIDDLE OF THE RETURN BEHIND THE SIDEWALK SO THAT THE OUTSIDE SIGNAL HEAD IS DIRECTLY ABOVE THE LEFT TURN LANE.
3. A TYPE "H" OR "L" FOUNDATION IS REQUIRED FOR MAST ARMS 45' OR LESS. SEE DRAWING NO. 721.
4. A TYPE "L" FOUNDATION IS REQUIRED FOR MAST ARMS LONGER THAN 45'. SEE DRAWING NO. 722.
5. A MINIMUM OF 32" 48" SHALL BE MAINTAINED BETWEEN TRAFFIC SIGNAL POLE FOUNDATION "CRASH CAP" AND THE BACK OF THE CURB FOR WHEELCHAIR CLEARANCE.
6. THE TRAFFIC ENGINEER WILL MAKE THE FINAL DETERMINATION FOR THE LOCATION OF TRAFFIC SIGNAL POLES.

AGENCY APPROVED	B	C	H	L	M	N
-----------------	---	---	---	---	---	---

SPECIFICATION REFERENCE	

UNIFORM STANDARD DRAWINGS CLARK COUNTY AREA	
FUTURE POLE LOCATION CASE II	
DATE	12-12-96
DWG. NO.	888.1

Effective 7/1/14