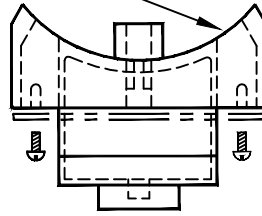
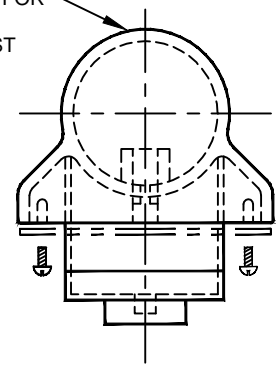


DIA. TO FIT STANDARD

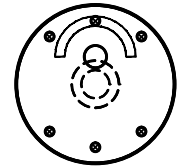
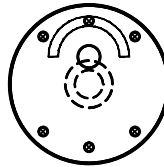
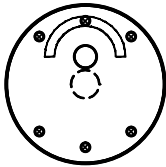
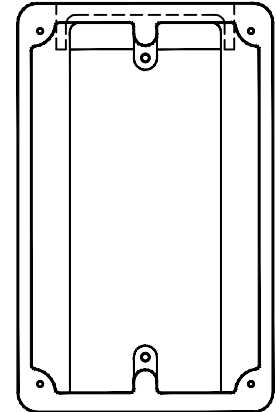
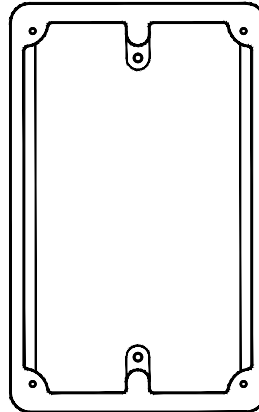
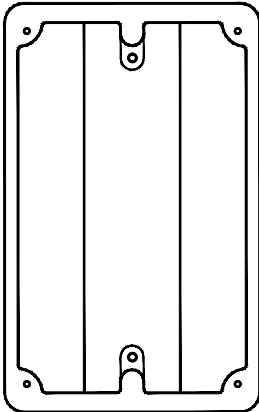


MACHINE OFF CAP FOR 8'-6" PEDESTRIAN PUSH BUTTON POST



NOTES:

1. CAST ALUMINUM HOUSING.
2. PAINT COLOR SHALL MATCH SIGNAL HOUSING.



FOR FLAT SURFACE MOUNTING

FOR SIGNAL STANDARD MOUNTING

FOR 2-1/2" IPS MOUNTING

NOTES:

1. AT LOCATIONS WHERE "WALK" "DON'T WALK" SIGNALS ARE PROVIDED, PROVIDE BLACK LETTERING ON A WHITE BACKGROUND ON PORCELAIN SIGNS.
2. AT LOCATIONS WHERE "SYMBOLIC" SIGNALS ARE PROVIDED, PROVIDE WHITE FIGURES ON A BLACK BACKGROUND.
3. MOUNTING SURFACE FOR THE SIGNS SHALL BE 9" X 12".



AGENCY APPROVED B C H M N

SPECIFICATION REFERENCE

UNIFORM STANDARD DRAWINGS
CLARK COUNTY AREA

PEDESTRIAN PUSH BUTTON
DETECTORS

DATE 08-09-18 DWG. NO. 838