

NOTES:

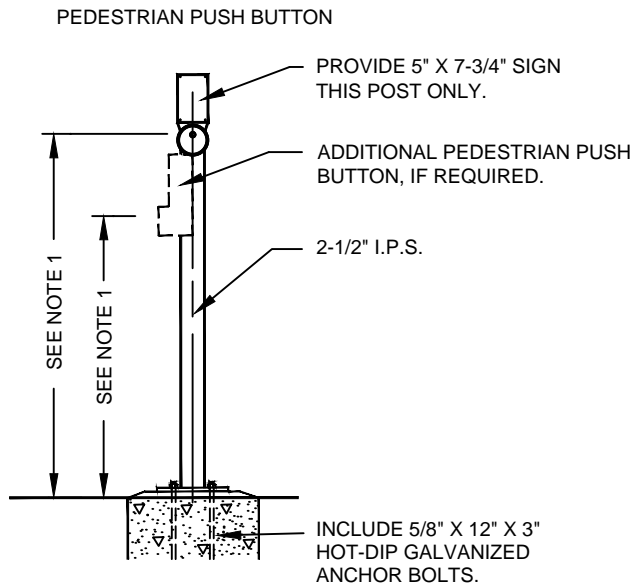
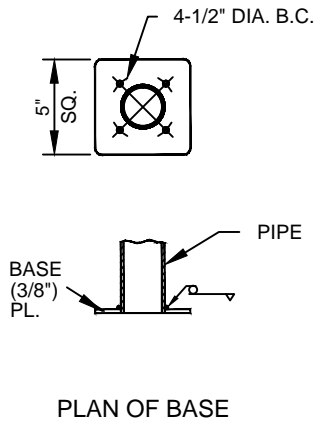
1. PEDESTRIAN PUSH BUTTON SHALL NOT BE LOCATED MORE THAN 24" FROM THE BACK OF WALK. IF DISTANCE FROM BACK OF WALK TO PUSH BUTTON IS 20" TO 24", THE BUTTON SHALL BE LOCATED AT A MAXIMUM HEIGHT OF 44" FROM THE SURFACE OF THE WALK; OTHERWISE, THE MAXIMUM HEIGHT SHALL BE 48".
2. THE FORCE REQUIRED TO ACTIVATE CONTROL SHALL BE NO GREATER THAN 5 LB.
3. POST SHALL BE HOT-DIP GALVANIZED BY MANUFACTURER OR PRIME PAINTED BY MANUFACTURER AND FINISH PAINTED BY CONTRACTOR PER SPECIFICATIONS AND AS REQUIRED BY THE ENTITY.

FOR TYPE "A" FOUNDATION SEE DRAWING NO. 715

	AGENCY APPROVED	B	C	H	M	N
SPECIFICATION REFERENCE	UNIFORM STANDARD DRAWINGS CLARK COUNTY AREA					
	PEDESTRIAN PUSH BUTTON POST FOR SPECIAL SIGN (8 FT.- 6 INCHES HIGH)					
	DATE 08-09-18	DWG. NO.	805	SHEET	1 OF 2	



PEDESTRIAN PUSHBUTTON
FOR 2 1/2" POSTTOP MOUNTING



NOTES:

1. PEDESTRIAN PUSH BUTTON SHALL NOT BE LOCATED MORE THAN 24" FROM THE BACK OF WALK. IF DISTANCE FROM BACK OF WALK TO PUSH BUTTON IS 20" TO 24", THE BUTTON SHALL BE LOCATED AT A MAXIMUM HEIGHT OF 44" FROM THE SURFACE OF THE WALK; OTHERWISE, THE MAXIMUM HEIGHT SHALL BE 48".
2. THE FORCE REQUIRED TO ACTIVATE CONTROL SHALL BE NO GREATER THAN 5 LB.
3. POST SHALL BE HOT-DIP GALVANIZED BY MANUFACTURER OR PRIME PAINTED BY MANUFACTURER AND FINISH PAINTED BY CONTRACTOR PER SPECIFICATIONS AND AS REQUIRED BY THE ENTITY.

FOR TYPE "A" FOUNDATION SEE DRAWING NO.715

		AGENCY APPROVED	B	C	H	M	N
SPECIFICATION REFERENCE		UNIFORM STANDARD DRAWINGS CLARK COUNTY AREA					
		PEDESTRIAN PUSH BUTTON POST FOR 2 1/2 INCHES POSTTOP MOUNTING					
		DATE 08-09-18	DWG. NO.	805	SHEET	2 OF 2	