

AMERON NOTES AND SPECIFICATIONS:

"F" LEVEL CONFIG CODES			"P" LEVEL CONFIG CODES		
OPTION CLASS	ENTRY	INFO.	OPTION CLASS	ENTRY	INFO.
COATING	1	-	MIX	12	-
HH COVER	43436PA	"LV"	FINISH	3	-
DOOR SCRS	TMP	-	BASEPLATE	45042	NOTE #8
DRILL-IN MOD	MODEBEB	-	POLE TOP CON.	MOD90	-

DECORATIVE BASE OCTAGONAL BASE PLATE POLE

POLE DESIGNATION	POLE HEIGHT ABOVE GRADE	OVERALL POLE LENGTH	BOLT CIRCLE	BASE O.D.	ULTIMATE G.J. MOMENT (FT.-LBS.)	POLE WEIGHT (LBS.)
6B121	20'-10"	21'-1"	21"	18"	18,400	1,255

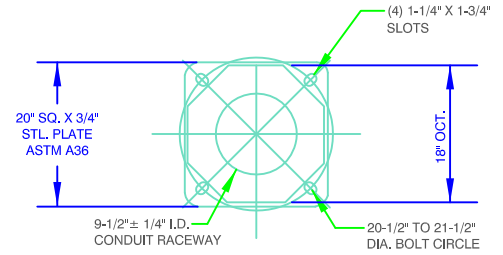
() POLES REQUIRED, EACH WITH 4' & 8' DOUBLE ALUMINUM LMA

SINGLE BELL RECEPTACLE (P/N: T.B.D.) & TAMPER

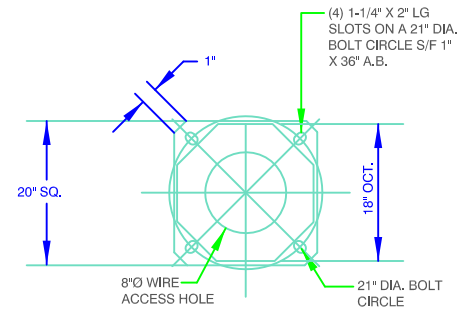
PROOF WRENCH (P/N: 45126)

NOTES:

- MIX (1231): BLACK, EXPOSED AGGREGATE FINISH WITH AMERSHIELD ANTI-GRAFFITI COATING.
- f_c @ 28 DAYS = 6,000 PSI, USING SPUN CYLINDER TEST.
- f_c @ 28 DAYS = 5,000 PSI USING ASTM C-31 CYLINDER TEST.
- POLES MANUFACTURED PER ASTM C-1089-06 SPECIFICATIONS.
- BASEPLATE ASTM A-36 FULLY PRESTRESSED WITH (8) 5/16" DIA. A-416 WIRES (7-STRAND CABLES).
- PROTECTIVE COAT EXPOSED P.C. WIRES AT POLE ENDS.
- LMA IS DESIGNED TO ROTATE TO ANY OCTAGONAL FLATS PER CUSTOMER'S REQUIREMENTS.
- POLE SHOWN IS SUITABLE FOR CAPPED BASE PLATE (ENCASED IN CONCRETE), OTHERWISE, OTHER NON-CAPPED INSTALLATION REQUIRED A GALVANIZED BASE PLATE.
- THE 8" DOUBLE TOP MOUNT ALUMINUM DECORATIVE S-ARM PIPE LMA ASSEMBLY (NOT TO EXCEED UP TO, 1.74 SQ. FT. EPA, 12 LBS. PER SIDE) DEPICTED ON THIS DRAWING IS DESIGNED TO WITHSTAND THE LOADS IMPARTED BY (2) GE DECASPHERE FLAT LUMINAIRES (NOT TO EXCEED 1.9 SQ. FT. EPA, 48 LBS. EACH, ONE PER SIDE); THE POLE DEPICTED IS DESIGNED TO WITHSTAND THE LOADS IMPARTED BY TO TOP MOUNT LMA, THE (2) LUMINAIRES & (2) 18" X 60" BANNER CENTERED NO HIGHER THAN 12'-6" ABOVE GRADE, AS DESIGNED PER THE 2009 AASHTO LTS-5 IN A 90MPH WIND ZONE (3-SECOND GUSTS), PLEASE ADVISE IF THE INTENDED LOADING EXCEEDS THESE VALUES.



AMERON BASE PLATE DETAIL
N.T.S.



STRESSCRETE BASE PLATE DETAIL
1" THK. GALV. STEEL
N.T.S.

STRESSCRETE NOTES AND SPECIFICATIONS:

POLE SPECIFICATIONS:

CATALOGUE NO.:	KMH21-G-E11-FBP C/W 140-35/55
SECTION:	OCTAGONAL
COLOUR:	ECLIPSE
FINISH:	ETCHED
POLE LENGTH:	21'-0"
POLE TOP:	7 3/16" FL/FL
POLE BUTT:	18" FL/FL
APPROX. WGT.:	T.B.A.
QUANTITY:	
MIN. RACEWAY:	1 1/8" Ø

ARM SPECIFICATIONS:

CATALOGUE NO.:	KA33-T-4/8'-2
QUANTITY:	
MATERIAL:	ALUMINUM
PAINT:	SEMI-GLOSS BLACK

COATINGS REQUIRED:

-1 COAT ANTI-GRAFFITI FULL LENGTH

NOTES:

- MIX ECLIPSE BLACK, EXPOSED AGGREGATE FINISH WITH JONES BLAIR ANTI-GRAFFITI COATING.
- f_c @ 28 DAYS = 8,000 PSI, USING ASTM C-31 CYLINDER TEST.
- POLES MANUFACTURED PER ASTM C-1089-06 SPECIFICATIONS.
- BASEPLATES ASTM A-36 WELDED BY CERTIFIED WELDER.
- PROTECTIVE COAT EXPOSED P.C. WIRES AT POLE ENDS.
- LMA IS DESIGNED TO ROTATE TO ANY OCTAGONAL FLATS PER CUSTOMERS REQUIREMENTS.
- POLE SHOWN IS SUPPLIED WITH GALV. STEEL BASEPLATE FOR CAPPED OR NON-CAPPED INSTALLATION.
- THE 8" DOUBLE TOP MOUNT ALUMINUM DECORATIVE S-ARM PIPE LMA ASSEMBLY (NOT TO EXCEED UP TO, 1.74 SQ. FT. EPA, 12 LBS. PER SIDE) DEPICTED ON THIS DRAWING IS DESIGNED TO WITHSTAND THE LOADS IMPARTED BY GARDCO OR KING LUMINAIRE FIXTURES. THE POLE DEPICTED IS DESIGNED TO WITHSTAND THE LOADS IMPARTED BY THE TOP MOUNT LMA AND THE (2) LUMINAIRES, AS DESIGNED PER THE 2009 AASHTO LTS-5 IN A 90MPH WIND ZONE (3-SECOND GUSTS).
- STRESSCRETE POLE WARRANTY - LIFETIME.

AGENCY APPROVED

L

SPECIFICATION REFERENCE

501	PORTLAND CEMENT CONCRETE
623	TRAFFIC SIGNALS & STREET LIGHTING

**UNIFORM STANDARD DRAWINGS
CLARK COUNTY AREA**

**CITY OF LAS VEGAS
STREET LIGHT NOTES AND SPECIFICATIONS
(AMERON AND STRESSCRETE)**

DATE 08-09-18 DWG. NO. 342.1