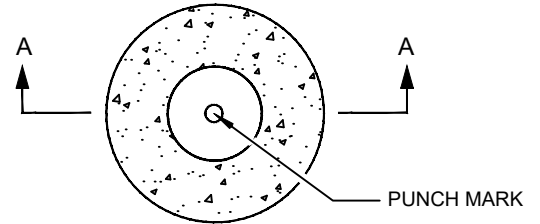
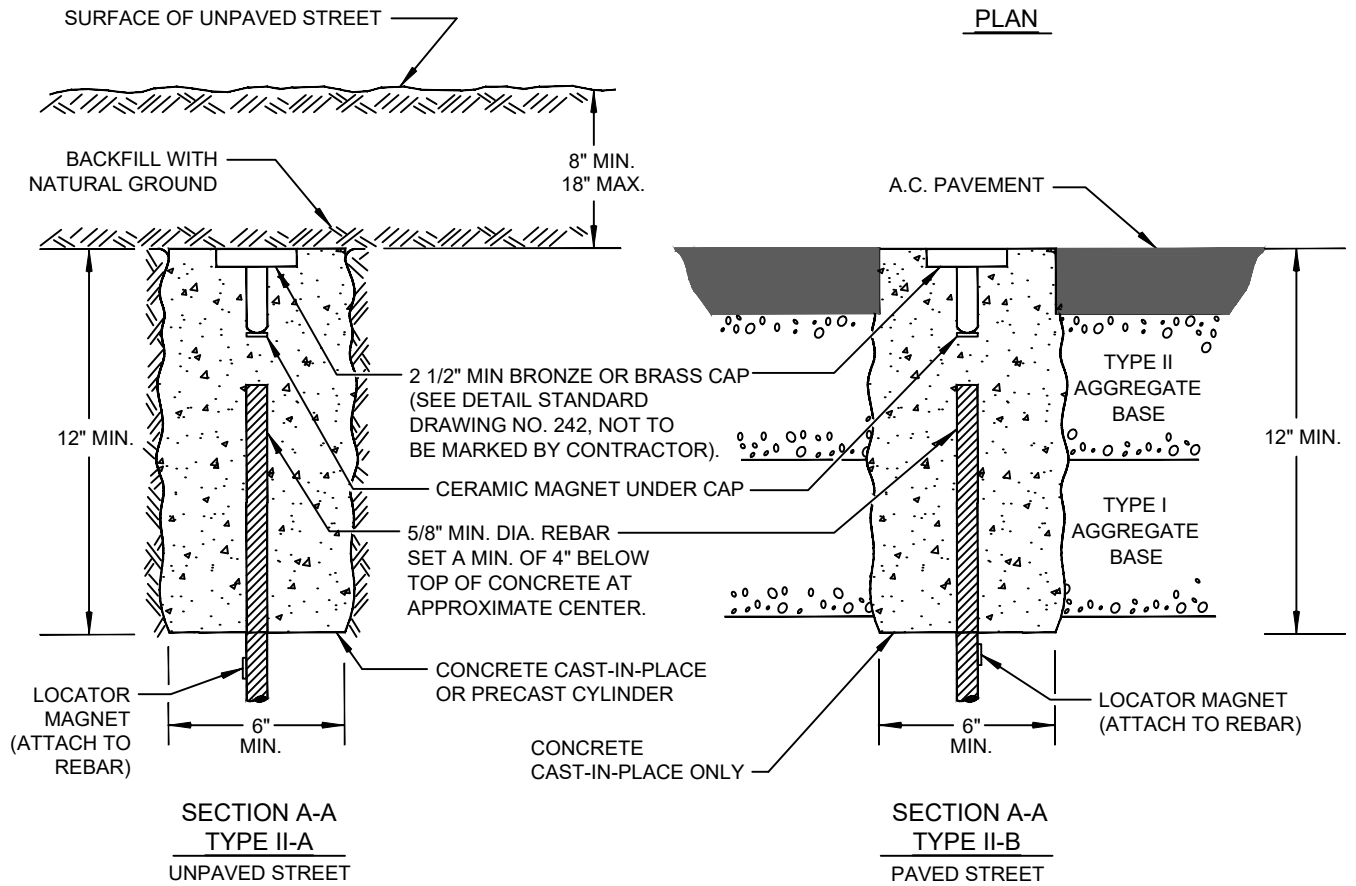


NOTES:

1. TYPE II-A OR TYPE II-C MONUMENTS TO BE SET AT ALL SECTION CORNERS, 1/4 SECTION CORNERS AND 1/16 SECTION CORNERS WHICH FALL WITHIN UNIMPROVED STREET SECTIONS.
2. TYPE II-B MONUMENTS TO BE SET AT ALL 1/16 SECTION CORNERS WHICH FALL WITHIN IMPROVED STREET SECTIONS, UNLESS A TYPE I MONUMENT IS REQUIRED BY THE AGENCY.
3. ALL TYPE II LAND CORNER MONUMENTS ARE TO BE MARKED IN ACCORDANCE WITH THE CURRENT B.L.M. MANUAL OF SURVEYING INSTRUCTIONS.
4. IF MONUMENTS ARE TO BE "PRECAST" THEY ARE TO BE EMBEDDED IN FRESH CONCRETE TO PREVENT MOVEMENT.
5. THE COUNTY/CITY SURVEYOR MAY REQUIRE TYPE II MONUMENTS IN ADDITIONAL LOCATIONS.
6. 6" x 6" SQUARE MONUMENTS ARE ACCEPTABLE BELOW GRADE ONLY. ANY PENETRATION THROUGH THE ASPHALT MUST BE CIRCULAR.



PLAN



SPECIFICATION REFERENCE		AGENCY APPROVED	B	C	H	L	M	N
501	CONCRETE	UNIFORM STANDARD DRAWINGS CLARK COUNTY AREA						
621	MONUMENTS							
		TYPE II MONUMENT OPTION 1						
		DATE 03-12-26	DWG. NO.	240				