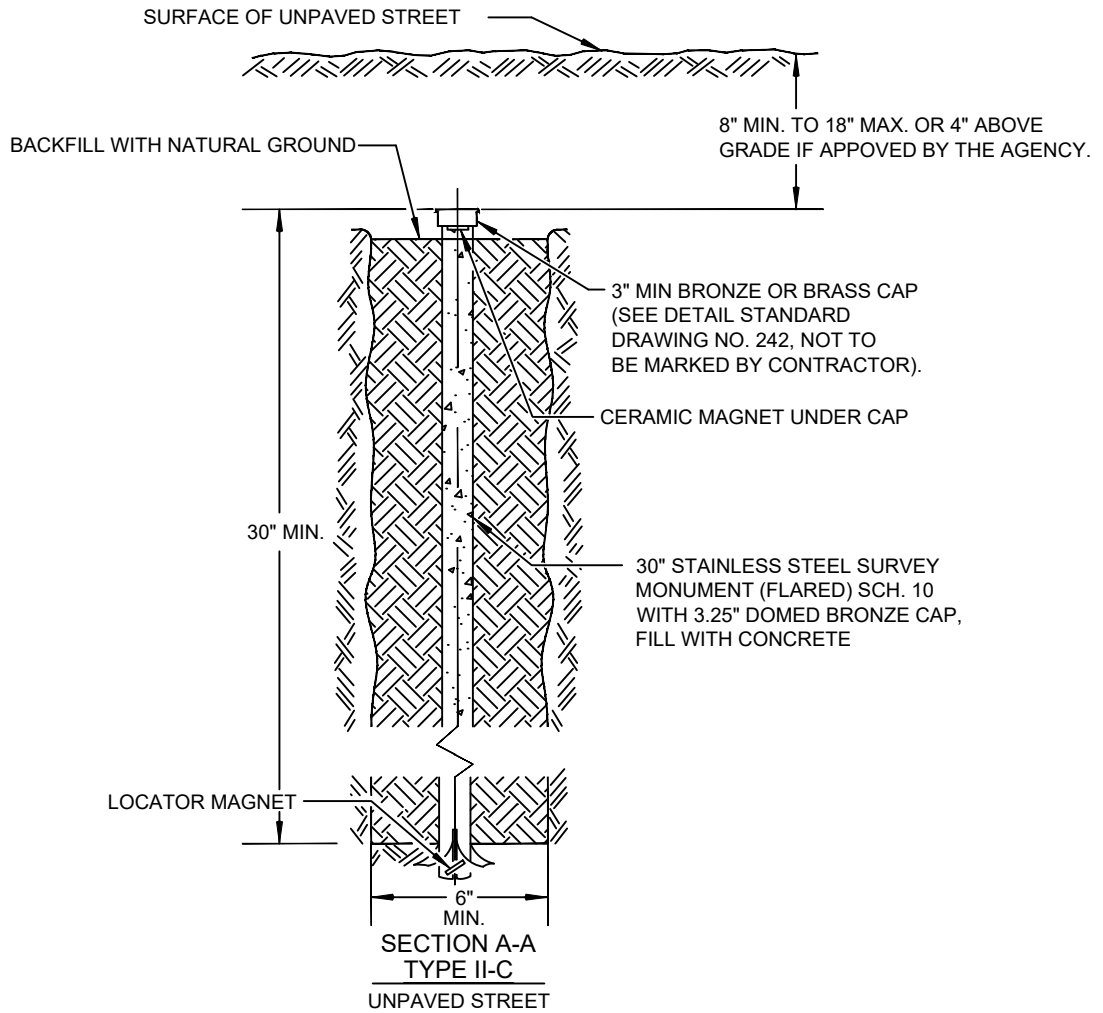
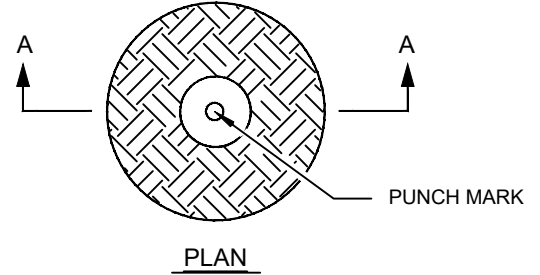


**NOTES:**

1. TYPE II-A OR TYPE II-C MONUMENTS TO BE SET AT ALL SECTION CORNERS, 1/4 SECTION CORNERS AND 1/16 SECTION CORNERS WHICH FALL WITHIN UNIMPROVED STREET SECTIONS.
2. TYPE II-B MONUMENTS TO BE SET AT ALL 1/16 SECTION CORNERS WHICH FALL WITHIN IMPROVED STREET SECTIONS, UNLESS A TYPE I MONUMENT IS REQUIRED BY THE AGENCY.
3. ALL TYPE II MONUMENTS ARE TO BE MARKED IN ACCORDANCE WITH THE CURRENT B.L.M. MANUAL OF SURVEYING INSTRUCTIONS.
4. TYPE II-C MONUMENTS ARE TO BE BACKFILLED WITH COMPACTED NATIVE MATERIAL TO PREVENT MOVEMENT.
5. THE COUNTY/CITY SURVEYOR MAY REQUIRE TYPE II MONUMENTS IN ADDITIONAL LOCATIONS.
6. TYPE II-C MONUMENTS ARE NOT TO BE USED WITH FINISHED GRADE ASPHALT INSTALLATIONS, AND ARE ACCEPTABLE BELOW GRADE ONLY.



AGENCY APPROVED	B	C	H	L	M	N
-----------------	---	---	---	---	---	---

SPECIFICATION REFERENCE	
501	CONCRETE
621	MONUMENTS

UNIFORM STANDARD DRAWINGS CLARK COUNTY AREA		
TYPE II MONUMENT OPTION 2		
DATE 03-12-26	DWG. NO.	240.1